

# ADURO X2

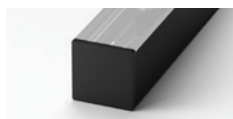


LED STRIP STR-ADURO X2



## POWER

## PROFILE / LUMINOUS FLUX



**11W** 11W / metre

**P17D2** · 610 lm / metre

**23W** 23W / metre

**P17D2** · 1250 lm / metre

## COLOUR TEMPERATURE

2700K

3000K

3500K

4000K

## COLOURS

Blue

Green

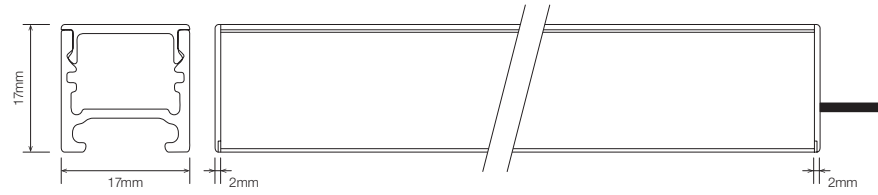
Red

Amber

Yellow

## DIMENSIONS

P17D P17 Profile



## ORDERING EXAMPLE

TYPE	WATTAGE	CCT	SEGMENTS	OPTICS	PROFILE / DIFFUSER	PROFILE COLOUR	WIRING CONFIG.	WIRING LENGTH	IP RATING
STR-ADURO X2	23W	3.0K	S2	L25	P17D	WHT	WR2BS	100	IP40

### WATTAGE

- 11W 10.5W per metre
- 23W 23W per metre

### COLOUR TEMPERATURE \*

- 2.7K 2700K CRI 80
- 2.7KCRI 2700K CRI 90
- 3.0K 3000K CRI 80
- 3.0KCRI 3000K CRI 90
- 3.5K 3500K CRI 80
- 4.0K 4000K CRI 80
- 4.0KCRI 4000K CRI 90

### STATIC COLOUR

- BL Blue
- GR Green
- RD Red
- AM Amber
- YL Yellow

### PRODUCT LENGTH

- Length as per Site Measurements
- Length:
- Undefined

- \* Other CCT subject to availability.
- \*\* Custom colours available on request.

### OPTICS

- L15 25° – 30° Beam
- L25 42° – 50° Beam
- O209 Oval 40° x 18° Beam
- NOP 110° Beam

### PROFILE / DIFFUSER

- P17D2 P17 Profile Diffused

### PROFILE COLOUR \*\*

- BLK Black (Standard)
- WHT White
- GRY Grey
- CST Custom Colour

### WIRING CONFIGURATION

- WR2.1OS Wire 2+1 Core One Side
- WR2.1BS Wire 2+1 Core Both Sides
- OC2.1MO Outdoor Connector 2+1 pin Male Only
- OC2.1MF Outdoor Connector 2+1 pin Male + Female
- SMPLC.1 Sample Type Connector 2.5mm

### WIRING LENGTH

- 100 100mm
- 250 250mm
- 500 500mm
- 1000 1000mm

### IP RATING

- IP40 Indoor Use