

MAX MINI

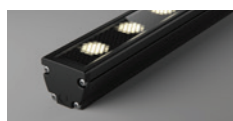


LINEAR MEDIUM POWER LNR-MAX MINI



POWER

PROFILE / LUMINOUS FLUX



33W 33W / metre

SC · 1600 lm / metre

FP · TBA

HL · TBA

ML · TBA

COLOUR TEMPERATURE

2700K

3000K

3200K

4000K

5000K

COLOURS

Blue

Green

Red

Amber



sales@coolon.com.au

aus. 1300 287 533

intl. +613 8681 3633

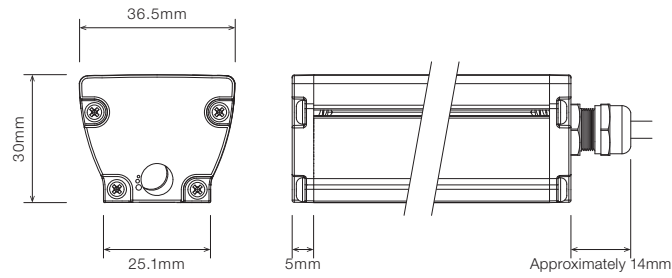
www.coolon.com.au

Version 1.00

All documentation is subject to change without notice. Refer to our website for the latest information.

■ DIMENSIONS

SD Standard Profile



■ ORDERING EXAMPLE

LNR-MAX MINI	3.2K	S2	O209	SC	BLK	WR2.1OS	WB	IP40
TYPE	CCT	SEGMENTS	OPTICS	DIFFUSER	PROFILE COLOUR	WIRING CONFIG.	WIRING POSITION	IP RATING

■ COLOUR TEMPERATURE

- 2.7K 2700K
- 3.0K 3000K
- 3.2K 3200K
- 4.0K 4000K
- 5.0K 5000K

■ PRODUCT LENGTH

- Length as per Site Measurements
- Length:
- Undefined

■ OPTICS

- L07 14° Beam
- L25 50° Beam
- F5010 Flare 100° x 20° Beam
- O209 Oval 40° x 18° Beam

* Custom colours available on request

■ DIFFUSER

- SC Standard Clear
- FP Fascia Plate
- HL Honeycomb Louvre
- ML Micro Louvre

■ PROFILE COLOUR

- BLK Black (Standard)
- WHT White
- CST Custom Colour *

■ WIRING CONFIGURATION

- WR2.1OS Wire 2+1 Core One Side
- SMPLC.1 Sample Type Connector 2.5mm

■ WIRING POSITION

- WB Wire from Back
- WS Wire from Side

■ IP RATING

- IP40 Indoor Use
- IP65 Outdoor Use