

ELECTRO

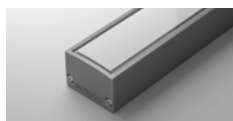


LINEAR MEDIUM POWER LNR-ELECTRO



POWER

PROFILE / LUMINOUS FLUX



25W 25W / metre

SD · 800 lm / metre

COLOUR TEMPERATURE

2700K

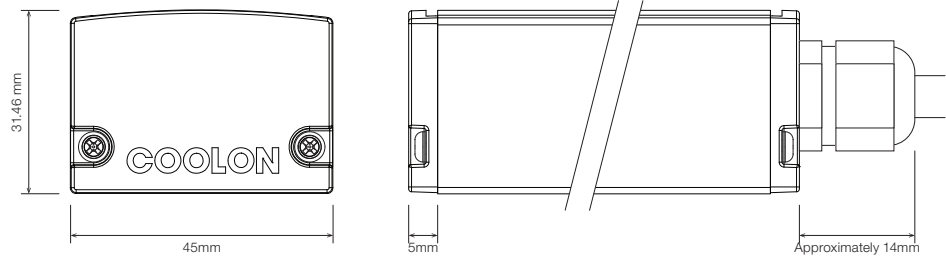
3000K

3500K

4000K

■ DIMENSIONS

SD Standard Profile



■ ORDERING EXAMPLE

LNR-ELECTRO **3.5K** **S2A1** **SD** **BLK** **WR2.1OS** **WB** **IP65**

TYPE CCT SEGMENTS DIFFUSER PROFILE COLOUR WIRING CONFIG. WIRING POSITION IP RATING

■ COLOUR TEMPERATURE

- 2.7K 2700K
- 3.0K 3000K
- 3.5K 3500K
- 4.0K 4000K

■ PRODUCT LENGTH

- Length as per Site Measurements
- Length:
- Undefined

* Custom colours available on request

■ DIFFUSER

- SD Standard Diffused

■ PROFILE COLOUR

- BNA Brushed Natural Aluminium (Standard)
- BLK Black
- WHT White
- CST Custom Colour *

■ WIRING CONFIGURATION

- WR2.1OS Wire 2+1 Core One Side
- OC2.1MO Outdoor Connector 2+1 pin Male Only
- SMPLC.1 Sample Type Connector 2.5mm

■ WIRING POSITION

- WB Wire from Back
- WS Wire from Side

■ IP RATING

- IP40 Indoor Use
- IP65 Outdoor Use