

ARIS

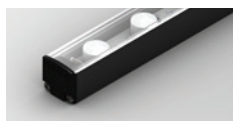


LINEAR MEDIUM POWER LNR-ARIS



POWER

PROFILE / LUMINOUS FLUX



33W 33W / metre

SC · 1600 lm / metre

COLOUR TEMPERATURE

2700K

3000K

3200K

4000K

5000K

COLOURS

Blue

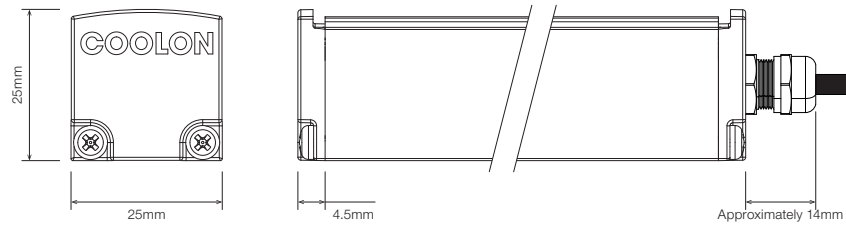
Green

Red

Amber

DIMENSIONS

SD Standard Profile



ORDERING EXAMPLE

LNR-ARIS	3.2K	S2	O209	SC	BLK	WR2.1OS	WB	IP40
TYPE	CCT	SEGMENTS	OPTICS	DIFFUSER	PROFILE COLOUR	WIRING CONFIG.	WIRING POSITION	IP RATING

COLOUR TEMPERATURE

- 2.7K 2700K
- 3.0K 3000K
- 3.2K 3200K
- 4.0K 4000K
- 5.0K 5000K

STATIC COLOUR

- BL Blue
- GR Green
- RD Red
- AM Amber

PRODUCT LENGTH

- Length as per Site Measurements
- Length:
- Undefined

* Custom colours available on request

OPTICS

- L07 14° Beam
- L25 50° Beam
- F5010 Flare 100° x 20° Beam
- O209 Oval 40° x 18° Beam

DIFFUSER

- SC Standard Clear

PROFILE C

- BLK Black (Standard)
- WHT White
- CST Custom Colour *

WIRING CONFIGURATION

- WR2.1OS Wire 2+1 Core One Side
- SMPLC.1 Sample Type Connector 2.5mm

WIRING POSITION

- WB Wire from Back
- WS Wire from Side

IP RATING

- IP40 Indoor Use