

# ALTO CL

LED STRIP CHAIN MODULE STR-ALTO CL





The Alto CL hosts the efficacy of its linear rigid siblings with added flexibility that allows it to twist and turn as you please.

Its flexibility makes the Alto CL the optimum choice for indirect curved cove lighting solutions.

The product arrives pre-connected or in kit format allowing easy installation. Quick connections made from module to module facilitate on-site adjustments.

#### POWER

#### LUMINOUS FLUX

##### 5W

4.6W / metre



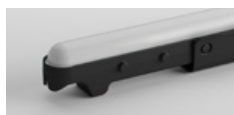
SD • 500 lm / metre

#### POWER

#### LUMINOUS FLUX

##### 10W

9.4W / metre



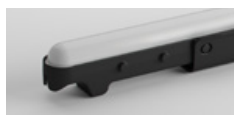
SD • 1000 lm / metre

#### POWER

#### LUMINOUS FLUX

##### 15W

14.0W / metre



SD • 1500 lm / metre

#### COLOUR TEMPERATURE

2700K

3000K

4000K



## CURVE RIGID STRIPS WITH EASE

The Alto CL is a rigid chain led fitting that has flexible connection in between modules, enabling use in curved coves and pelmets.

## SIMPLIFIED INSTALLATION

The strip arrives pre-connected to suit the length required on site. Simply take out of the box and connect it to power.



### LONG USEFUL OPERATING LIFE

Currently available specification from world's most reputable LED manufacturers states 50,000 hours of continuous operation at the rated current within the operating temperature range to 70% residual light output.



### VARIOUS CCT & COLOUR BINNING CONSISTENCY

Product is offered in various Colour Temperatures using tighter bins.



### 3 YEARS FULL /SOLID WARRANTY

Coolon Luminaires are covered by a solid comprehensive manufacturer's warranty that covers a range of possible defects and performance parameters throughout the duration of the warranty period.



### PROUDLY MADE IN AUSTRALIA

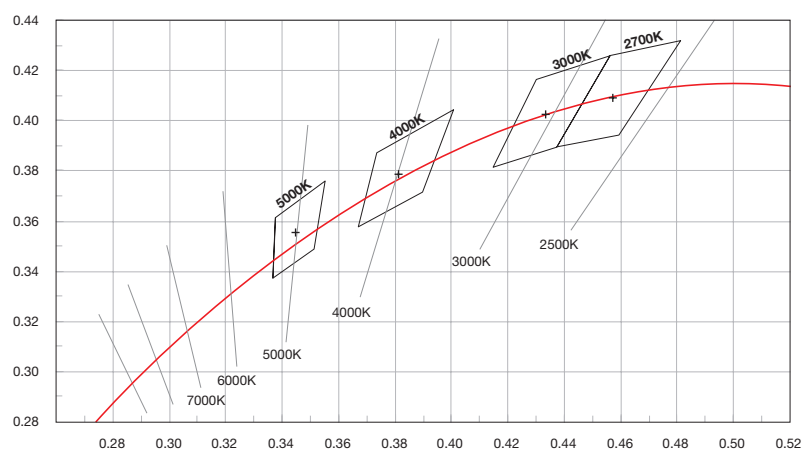
Our products are designed and manufactured in Australia. Engineered to perfection, using only the highest quality components and highly skilled labour, each luminaire is assembled and thoroughly tested to ensure that it exceeds the highest standards.

## TECHNICAL SPECIFICATIONS

	5W VERSION	10W VERSION	15W VERSION
Product Code	STR-ALTO CL 5W	STR-ALTO CL 10W	STR-ALTO CL 15W
Description	LED Strip Chain Module		
Segment Length (S)	180mm		
Segment Width	20.5mm		
LED Pitch	30.0mm		
LEDs Per Segment	6		
Operating Voltage	42 – 48VDC	42VDC	42VDC
Typical Power Consumption per Segment	0.82W per 180mm Segment	1.69W per 180mm Segment	2.52W per 180mm Segment
Typical Current	20mA per 180mm Segment	40mA per 180mm Segment	60mA per 180mm Segment
Colour Rendering Index (CRI)	80 (Standard) up to 90		
Dimmable	Through DRV-DALIPOINT-1X5A, DRV-DALIPOINT-IP-1X10A, or DRV-DIMMERPOINT-1X10A (sold separately)		
Effective Beam Angle	120°		
External Heatsink Required	No		
Ambient Operating Temp	Ta -40°C to 50°C		
Average Lumen Maintenance @Ta 25°C	70% @ 50,000 Hours		
IP Rating	IP40		
Max Continuous Connection Length	14.4m or 80 Segments	9.18m or 51 Segments	4.68m or 26 Segments
Luminous Flux per Metre (lm/M)	500 lm/Metre	1000 lm/Metre	1500 lm/Metre

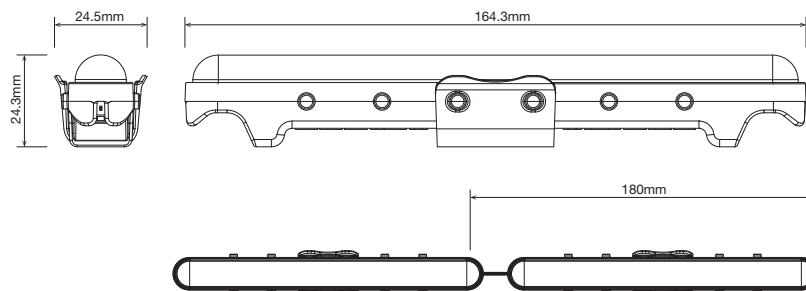
▪ Specified values measured at 2700K, 42VDC

## COLOUR BINNING



## DIMENSIONS

For final strip lengths please refer to the "Product Length" table.



## PRODUCT LENGTH

### POWERED BY 42VDC

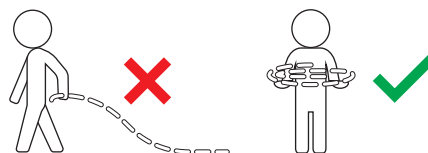
# OF MODULES	FINAL LENGTH	# OF MODULES	FINAL LENGTH
S1	180mm	S41	7,380mm
S2	360mm	S42	7,560mm
S3	540mm	S43	7,740mm
S4	720mm	S44	7,920mm
S5	900mm	S45	8,100mm
S6	1,080mm	S46	8,280mm
S7	1,260mm	S47	8,460mm
S8	1,440mm	S48	8,640mm
S9	1,620mm	S49	8,820mm
S10	1,800mm	S50	9,000mm
S11	1,980mm	S51	9,180mm
S12	2,160mm	S52	9,360mm
S13	2,340mm	S53	9,540mm
S14	2,520mm	S54	9,720mm
S15	2,700mm	S55	9,900mm
S16	2,880mm	S56	10,080mm
S17	3,060mm	S57	10,260mm
S18	3,240mm	S58	10,440mm
S19	3,420mm	S59	10,620mm
S20	3,600mm	S60	10,800mm
S21	3,780mm	S61	10,980mm
S22	3,960mm	S62	11,160mm
S23	4,140mm	S63	11,340mm
S24	4,320mm	S64	11,520mm
S25	4,500mm	S65	11,700mm
S26	4,680mm	S66	11,880mm
S27	4,860mm	S67	12,060mm
S28	5,040mm	S68	12,240mm
S29	5,220mm	S69	12,420mm
S30	5,400mm	S70	12,600mm
S31	5,580mm	S71	12,780mm
S32	5,760mm	S72	12,960mm
S33	5,940mm	S73	13,140mm
S34	6,120mm	S74	13,320mm
S35	6,300mm	S75	13,500mm
S36	6,480mm	S76	13,680mm
S37	6,660mm	S77	13,860mm
S38	6,840mm	S78	14,040mm
S39	7,020mm	S79	14,220mm
S40	7,200mm	S80	14,400mm

**NOTE:** 15W version only available up to S26. 10W version only available up to S51.

### ⚠ WARNING

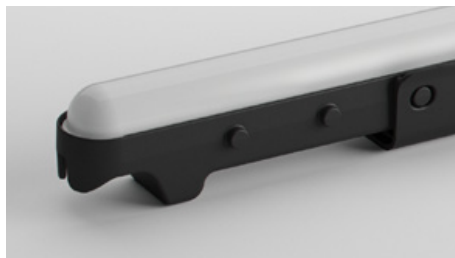
#### PLEASE HANDLE LONG LED STRIPS WITH CARE.

When handling LED Strips, please ensure that they are all supported and not dragged from one end.



## DIFFUSER

**SD** - Standard Diffused



## WIRING CONFIGURATION

CONNECTOR TYPE	DRAWING	FEMALE	MALE
WR2OS Wire 2 Core One Side			
WR2BS Wire 2 Core Both Sides			
OC2MO Outdoor Connector 2pin Male Only			
OC2MF Outdoor Connector 2pin Male + Female			
SMPLC Sample Type Connector 2.5mm			

- Wiring Length 250mm.
- Please consult Coolon for details on extension cables between LED fittings, drivers and PSUs.

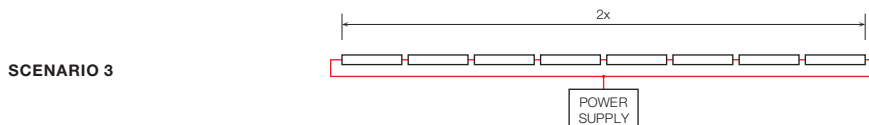
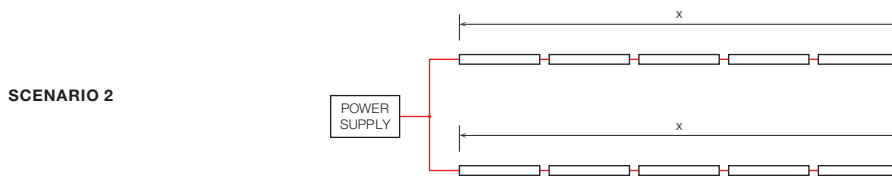
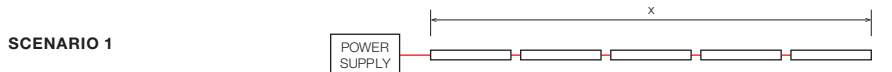
WIRING COLOUR CODE	
Red	+ VDC
Black	GND

## IP RATING

**IP40**

Protected against solid objects greater than 1mm. No protection against liquids.

■ INSTALLATION LIMITS



**5W VERSION**

MAX. CONTINUOUS CONNECTION LENGTH (X)	SUPPLY VOLTAGE	NUMBER OF MODULES
14,400mm	42VDC	80

**10W VERSION**

MAX. CONTINUOUS CONNECTION LENGTH (X)	SUPPLY VOLTAGE	NUMBER OF MODULES
9,180mm	42VDC	51

**15W VERSION**

MAX. CONTINUOUS CONNECTION LENGTH (X)	SUPPLY VOLTAGE	NUMBER OF MODULES
4,680mm	42VDC	26

**⚠ WARNING**

X

X

Avoid connecting multiple power supplies into a single circuit, unless they are specifically designed to do so.

## ORDERING EXAMPLE

### STR - ALTO CL - 5W - 3.0K - S1 - WR2OS - IP40



#### PRODUCT LENGTH PAGE 05

S1	180mm	S41	7,380mm
S2	360mm	S42	7,560mm
S3	540mm	S43	7,740mm
S4	720mm	S44	7,920mm
S5	900mm	S45	8,100mm
S6	1,080mm	S46	8,280mm
S7	1,260mm	S47	8,460mm
S8	1,440mm	S48	8,640mm
S9	1,620mm	S49	8,820mm
S10	1,800mm	S50	9,000mm
S11	1,980mm	S51	9,180mm
S12	2,160mm	S52	9,360mm
S13	2,340mm	S53	9,540mm
S14	2,520mm	S54	9,720mm
S15	2,700mm	S55	9,900mm
S16	2,880mm	S56	10,080mm
S17	3,060mm	S57	10,260mm
S18	3,240mm	S58	10,440mm
S19	3,420mm	S59	10,620mm
S20	3,600mm	S60	10,800mm
S21	3,780mm	S61	10,980mm
S22	3,960mm	S62	11,160mm
S23	4,140mm	S63	11,340mm
S24	4,320mm	S64	11,520mm
S25	4,500mm	S65	11,700mm
S26	4,680mm	S66	11,880mm
S27	4,860mm	S67	12,060mm
S28	5,040mm	S68	12,240mm
S29	5,220mm	S69	12,420mm
S30	5,400mm	S70	12,600mm
S31	5,580mm	S71	12,780mm
S32	5,760mm	S72	12,960mm
S33	5,940mm	S73	13,140mm
S34	6,120mm	S74	13,320mm
S35	6,300mm	S75	13,500mm
S36	6,480mm	S76	13,680mm
S37	6,660mm	S77	13,860mm
S38	6,840mm	S78	14,040mm
S39	7,020mm	S79	14,220mm
S40	7,200mm	S80	14,400mm

#### WATTAGE PAGE 04

5W	4.6W per Metre
10W	9.4W per Metre
15W	14.1W per Metre

#### COLOUR TEMPERATURE \* PAGE 04

2.7K	2700K CRI 80
2.7KCRI	2700K CRI 90
3.0K	3000K CRI 80
3.0KCRI	3000K CRI 90
4.0K	4000K CRI 80
4.0KCRI	4000K CRI 90

#### WIRING CONFIGURATION PAGE 07

WR2OS	Wire 2+1 Core One Side
WR2BS	Wire 2+1 Core Both Sides
OC2MO	Outdoor Connector 2 pin Male Only
OC2MF	Outdoor Connector 2 pin Male + Female
SMPLC	Sample Type Connector 2.5mm




#### IP RATING PAGE 07

IP40	Indoor Use
------	------------

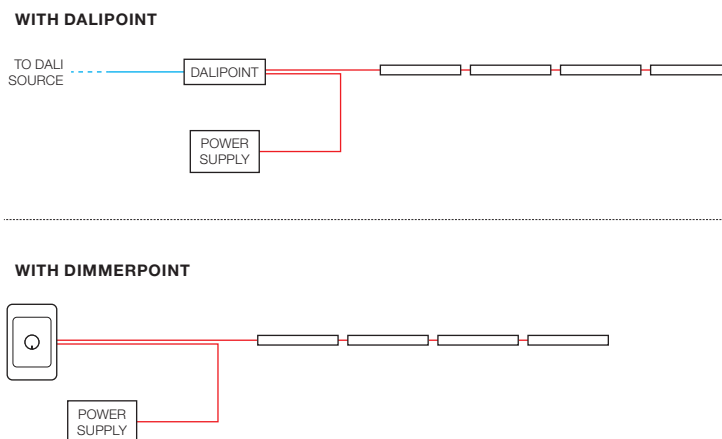
\* Other CCT subject to availability.



## ■ ACCESSORIES

	PRODUCT CODE	DESCRIPTION
<b>MOUNTING CLIP</b>		
	MC-CC	Black Plastic Mounting Clip for Primo / Multo CC Module
	MT-CC	Adhesive double sided mounting tape for Primo / Multo CC Module
<b>DRIVERS</b>		
	DRV-DALIPOINT-1X5A	DALI 5 Amps 1 Channel LED Driver
	DRV-DALIPOINT-IP-1X10A	DALI 10 Amps 1 Channel Outdoor LED Driver
	DRV-DIMMERPOINT-1X10A	Rotary Wall-Mount LED Driver
	DRV-RDM-P4	DMX/RDM 4 Channel LED Driver
	DRV-RDM-IP-P4	Outdoor DMX/RDM 4 Channel LED Driver
<b>POWER SUPPLY</b>		
	PWR-HLG60-42	Mean Well Power Supply HLG 60W 42V IP67
	PWR-HLG150-42	Mean Well Power Supply HLG 150W 42V IP67
	PWR-HLG240-42	Mean Well Power Supply HLG 240W 42V IP67

## ■ WIRING DIAGRAMS



\* Please consult Coolon for details on extension cables between LED fittings, drivers and PSUs.