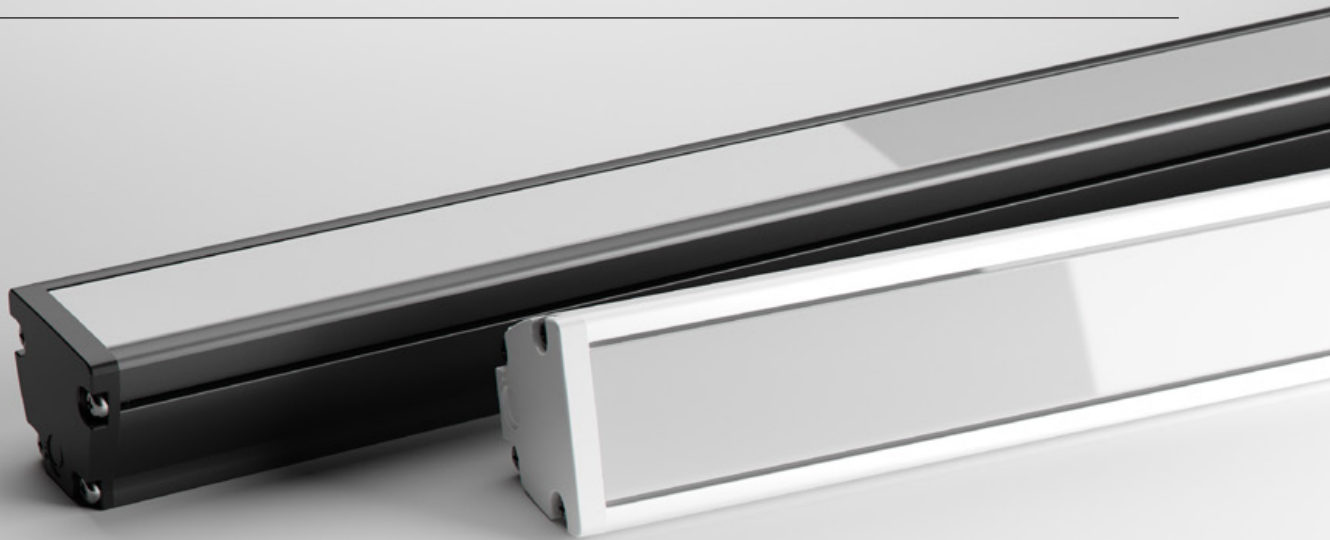


MAX MINI UG

LINEAR MEDIUM POWER LNR-MAX MINI UG





The Max Mini UG is a compact and understated linear architectural luminaire. At 30x30mm in size and available in various lineal lengths, the Max Mini UG is offered with a Uniform Glowing diffuser where no LEDs are visible along the length of the diffuser.

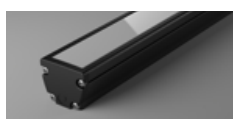
The Max Mini UG is ideal for direct/visible lighting applications where the source of the luminaire is important to the architectural aesthetic.

POWER

LUMINOUS FLUX

28W

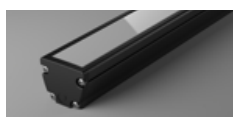
28W / metre



UG • 1,800 lm / metre

40W

39.2W / metre



UG • 2,500 lm / metre

COLOUR TEMPERATURE

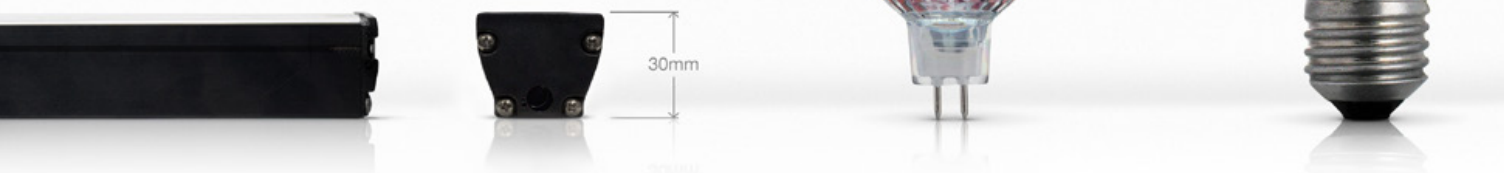
2700K

3000K

4000K

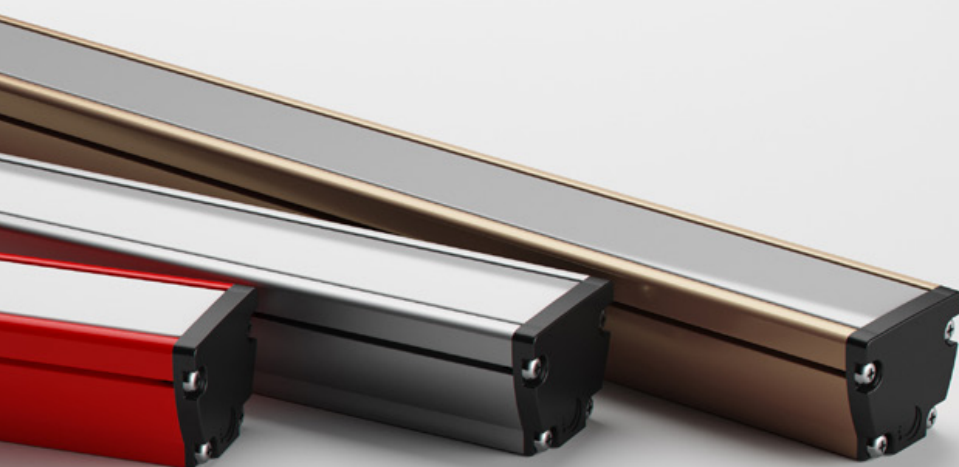
COMPACT SIZE

Reduced profile dimensions allows for ease of installation in confined spaces that could not be achieved with previous halogen counterparts. Installed in visible sight the Max Mini UG also pays respect to the interior design with minimal disruption to the aesthetics.



CUSTOMISATION AT ITS BEST

The Max Mini UG is a highly versatile and customisable luminaire. Pick from a number of linear lengths, colour temperatures, profile colours and mounting options. The Max Mini UG can be used as a marker luminaire or a flood light.



L90

LONG OPERATING LIFE

Coolon products use world's most reputable LED manufacturers and the latest available standard to adequately report luminaire lumen maintenance.

We strive to drive LEDs under their nominal current and use state of the art heat dissipation methods, leading to durable electronics.



VARIOUS CCT & COLOUR BINNING CONSISTENCY

Product is offered in various Colour Temperatures using tighter bins.

5 YEARS

5 YEARS WARRANTY

Coolon Luminaires are covered by a solid comprehensible manufacturer's warranty that covers a range of possible defects and performance parameters throughout the duration of the warranty period.



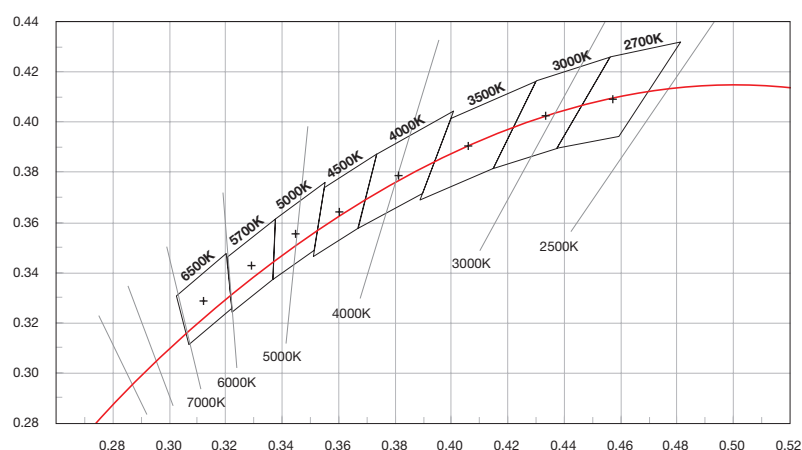
PROUDLY MADE IN AUSTRALIA

Our products are designed and manufactured in Australia. Engineered to perfection, using only the highest quality components and highly skilled labour, each luminaire is assembled and thoroughly tested to ensure that it exceeds the highest standards.

TECHNICAL SPECIFICATIONS

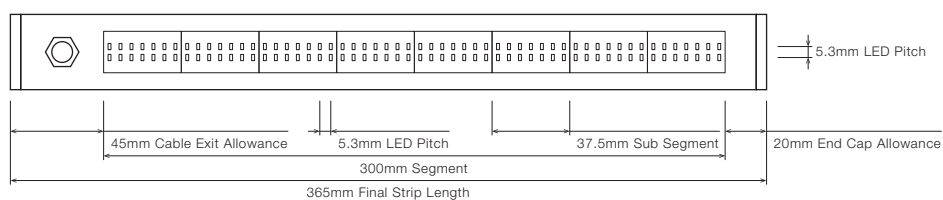
	28W VERSION	40W VERSION
Product Code	LNR-MAX MINI UG	
Description	Maxis Mini UG Linear Medium Power Projector	
Body	Aluminium Alloy Body	
Finish	Powder Coated Black (Standard), Various Colours Available	
Cover	Polycarbonate	
End Caps	Polycarbonate	
Segment Length (S)	300mm	
Sub-Segment Length (A)	37.5mm	
Number of Sub-Segments	8	
Segment Width	20mm	
LED Pitch	5.3mm (W) x 5.3mm (H)	
LEDs Per Segment	112	
LEDs Per Sub Segment	14	
Operating Voltage	42VDC	
Typical Power Consumption per Segment	8.50W per 300mm Segment	12.00W per 300mm Segment
Typical Power Consumption per Metre	28W per Metre	39.2W per Metre
Typical Current	200mA per 300mm Segment	280mA per 300mm Segment
Colour Rendering Index (CRI)	80+ (Standard) up to 90+	
Dimmable	Through DRV-DALIPOINT-1X5A, DRV-DALIPOINT-1X10A-IP or DRV-DIMMERPOINT-1X10A (sold separately)	
Luminous Flux per Metre (lm/M)	1,800lm/Metre	2,500lm/Metre
External Heatsink Required	No	
Ambient Operating Temp	Ta -20°C to 50°C	
Thermal Operating	Yes (Active)	
Reported Lumen Maintenance TM21-11 (@ Ts = 55°C, If = 65mA)	L70 (12K) > 72,000 hours L90 (12K) = 59,000 hours	
	Max Mini UG max. operating values (@ Ts = 40°C, If = 35mA)	
IP Rating	IP40 (Standard), up to IP65	
Max Continuous Connection Length	Please refer to installation limitations	

COLOUR BINNING

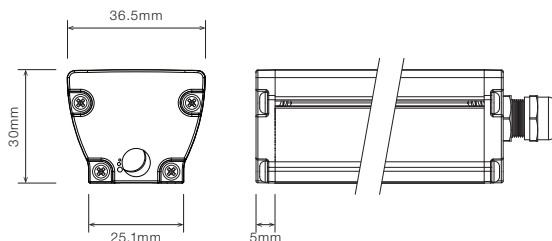


DIMENSIONS

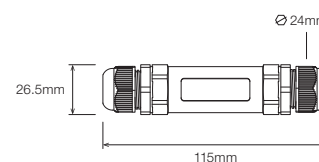
For final strip lengths please refer to the "Product Length" table.



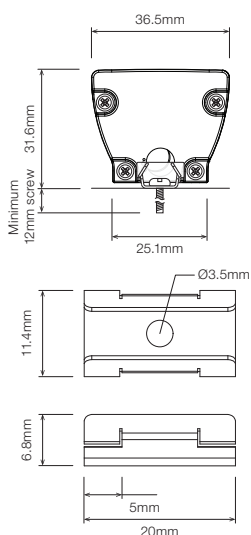
STANDARD PROFILE



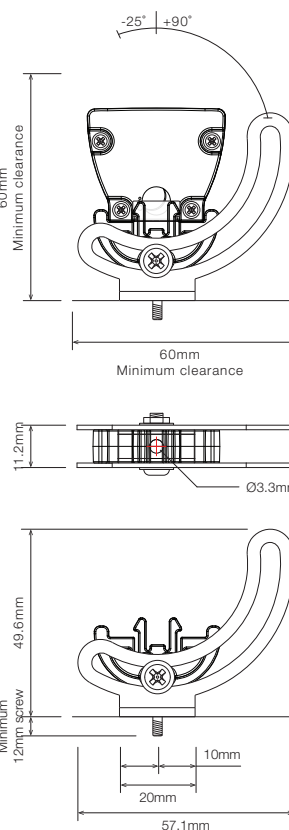
CABLE EXTENSION JOINER



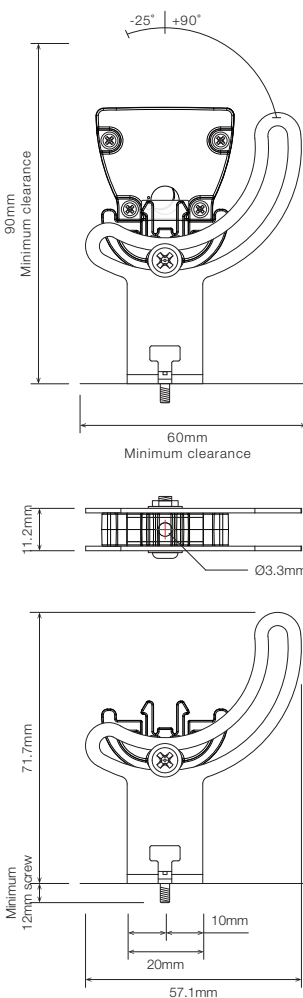
STAINLESS STEEL C-CLIP ¹



ROTATING MOUNTING BRACKET ¹



ELEVATED ROTATING MOUNTING BRACKET ^{1 2}



¹ Recommended spacing between Mounting Brackets is maximum 500mm and Mounting Clips is maximum 300mm.

² Elevated rotating bracket is the only suitable option when wire from back is required.

■ PRODUCT LENGTH

FULL SEGMENTS	SUB SEGMENTS	EXACT STRIP LENGTH	FINAL LENGTH
S0	A1	37.5mm	102.5mm
S0	A2	75mm	140mm
S0	A3	112.5mm	177.5mm
S0	A4	150mm	215mm
S0	A5	187.5mm	252.5mm
S0	A6	225mm	290mm
S0	A7	262.5mm	327.5mm
S1	A0	300mm	365mm
S1	A1	337.5mm	402.5mm
S1	A2	375mm	440mm
S1	A3	412.5mm	477.5mm
S1	A4	450mm	515mm
S1	A5	487.5mm	552.5mm
S1	A6	525mm	590mm
S1	A7	562.5mm	627.5mm
S2	A0	600mm	665mm
S2	A1	637.5mm	702.5mm
S2	A2	675mm	740mm
S2	A3	712.5mm	777.5mm
S2	A4	750mm	815mm
S2	A5	787.5mm	852.5mm
S2	A6	825mm	890mm
S2	A7	862.5mm	927.5mm
S3	A0	900mm	965mm
S3	A1	937.5mm	1,002.5mm
S3	A2	975mm	1,040mm
S3	A3	1,012.5mm	1,077.5mm
S3	A4	1,050mm	1,115mm
S3	A5	1,087.5mm	1,152.5mm
S3	A6	1,125mm	1,190mm
S3	A7	1,162.5mm	1,227.5mm
S4	A0	1,200mm	1,265mm
S4	A1	1,237.5mm	1,302.5mm
S4	A2	1,275mm	1,340mm
S4	A3	1,312.5mm	1,377.5mm
S4	A4	1,350mm	1,415mm
S4	A5	1,387.5mm	1,452.5mm
S4	A6	1,425mm	1,490mm
S4	A7	1,462.5mm	1,527.5mm
S5	A0	1,500mm	1,565mm
S5	A1	1,537.5mm	1,602.5mm
S5	A2	1,575mm	1,640mm
S5	A3	1,612.5mm	1,677.5mm
S5	A4	1,650mm	1,715mm
S5	A5	1,687.5mm	1,752.5mm
S5	A6	1,725mm	1,790mm
S5	A7	1,762.5mm	1,827.5mm
S6	A0	1,800mm	1,865mm

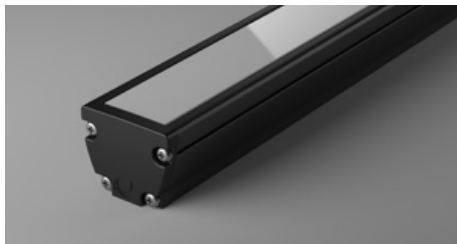
➤ Continued on next page

■ PRODUCT LENGTH

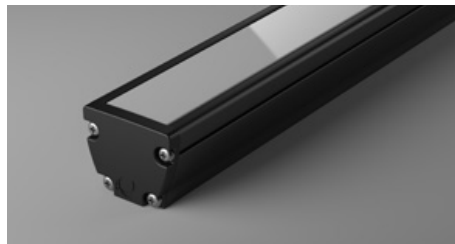
FULL SEGMENTS	SUB SEGMENTS	EXACT STRIP LENGTH	FINAL LENGTH
S6	A1	1,837.5mm	1,902.5mm
S6	A2	1,875mm	1,940mm
S6	A3	1,912.5mm	1,977.5mm
S6	A4	1,950mm	2,015mm
S6	A5	1,987.5mm	2,052.5mm
S6	A6	2,025mm	2,090mm
S6	A7	2,062.5mm	2,127.5mm
S7	A0	2,100mm	2,165mm
S7	A1	2,137.5mm	2,202.5mm
S7	A2	2,175mm	2,240mm
S7	A3	2,212.5mm	2,277.5mm
S7	A4	2,250mm	2,315mm
S7	A5	2,287.5mm	2,352.5mm
S7	A6	2,325mm	2,390mm
S7	A7	2,362.5mm	2,427.5mm
S8	A0	2,400mm	2,465mm
S8	A1	2,437.5mm	2,502.5mm
S8	A2	2,475mm	2,540mm
S8	A3	2,512.5mm	2,577.5mm
S8	A4	2,550mm	2,615mm
S8	A5	2,587.5mm	2,652.5mm
S8	A6	2,625mm	2,690mm
S8	A7	2,662.5mm	2,727.5mm
S9	A0	2,700mm	2,765mm
S9	A1	2,737.5mm	2,802.5mm
S9	A2	2,775mm	2,840mm
S9	A3	2,812.5mm	2,877.5mm
S9	A4	2,850mm	2,915mm
S9	A5	2,887.5mm	2,952.5mm
S9	A6	2,925mm	2,990mm

■ DIFFUSER

SD • Standard Diffuser - Uniform Glow ¹

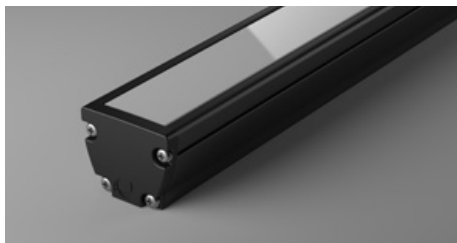


PT • Polyurethane Translucent - Uniform Glow ²

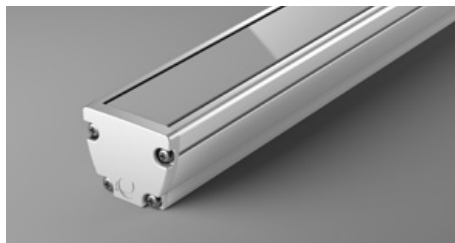


■ PROFILE COLOUR

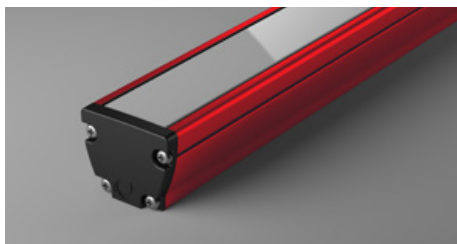
BLK • Black



WHT • White



CST • Custom Colour ³



¹ Standard Diffuser applicable to IP40 only

² Polyurethane Translucent applicable to IP65 only

³ Custom colours available on request

■ WIRING CONFIGURATION

CONNECTOR TYPE	DRAWING	MALE	FEMALE
WR20S Wire 2 Core One Side			
OC2.2MO Outdoor Connector 2.2pin Male Only			
SMPLC Sample Type Connector 2.5mm			

- Typical wiring length 1,000mm.
- Please consult Coolon for details on extension cable between LED fittings, drivers and power supplies.

WIRING COLOUR CODE	
Red	+ VDC
Black	GND

■ WIRING POSITION

WB - Wire from back



Ideal for fittings installed back-to-back or limited spaces.

WS - Wire from Side



Ideal for fittings installed individually or vertically.

■ IP RATING

IP40

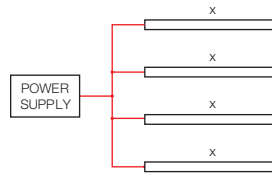
Protected against solid objects greater than 1mm. No protection against liquids.

IP65

Fully protected against dust. Protected against water jets from all directions.

■ INSTALLATION LIMITS

SCENARIO 1



MAX. CONTINUOUS CONNECTION LENGTH (X)	CONNECTOR TYPE
---------------------------------------	----------------

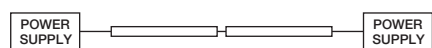
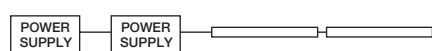
2,990 mm	
----------	--

	With standard 2 bare wires (WR20S)
--	------------------------------------

- Please consult Coolon for details on extension cable between LED fittings, drivers and power supplies.

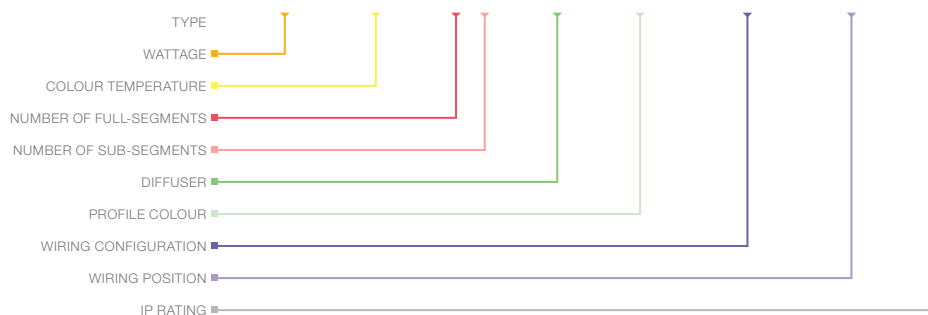
WARNING

Avoid connecting multiple power supplies into a single circuit, unless they are specifically designed to do so.



ORDERING EXAMPLE

LNR - MAX MINI UG - 40W - 2.7K - S2A0 - SD - BLK - WR2OS - WB - IP40



■ WATTAGE PAGE 04

28W	28W per metre
40W	39.2W per metre

■ COLOUR TEMPERATURE PAGE 04

2.7K	2700K CRI 80
2.7KCRI	2700K CRI 90
3.0K	3000K CRI 80
3.0KCRI	3000K CRI 90
4.0K	4000K CRI 80
4.0KCRI	4000K CRI 90

■ PRODUCT LENGTH PAGE 06

FULL SEGMENTS	SUB SEGMENTS
S1	A0
S2	A1
S3	A2
S4	A3
S5	A4
S6	A5
S7	A6
S8	A7
S9	

■ DIFFUSER PAGE 08

SD	Standard Diffuser - Uniform Glow ¹
PT	Polyurethane Translucent - Uniform Glow ²

■ PROFILE COLOUR PAGE 08

BLK	Black (Standard)
WHT	White
CST	Custom Colour ³

■ WIRING CONFIGURATION PAGE 09

WR2OS	Wire 2 Core One Side
OC2.2MO	Outdoor Connector 2.2pin Male Only
SMPLC	Sample Type Connector 2.5mm

■ WIRING POSITION PAGE 09

WB	Wire from Back
WS	Wire from Side

■ IP RATING PAGE 09


IP40	Indoor Use
IP65	Outdoor Use

¹ Standard Diffuser applicable to IP40 only.


² Polyurethane Translucent applicable to IP65 only.


³ Custom colours available on request.

■ ACCESSORIES

	PRODUCT CODE	DESCRIPTION
	MC-CCLIP	Stainless Steel C-Clip
	MBR-PMAX-BLK	Rotating Mounting Bracket for Max Mini Black
	MBR-PMAX-WHT	Rotating Mounting Bracket for Max Mini White
	MBR-PMAX-E-BLK	Elevated Rotating Mounting Bracket for Max Mini Black
	MBR-PMAX-E-WHT	Elevated Rotating Mounting Bracket for Max Mini White

* Recommended spacing between Mounting Brackets is maximum 500mm and Mounting Clips is maximum 300mm.

DRIVER		
	DRV-DALIPOINT-1X5A	DALI 5 Amps 1 Channel LED Driver
	DRV-DALIPOINT-1X10A-IP	DALI 10 Amps 1 Channel Outdoor LED Driver
	DRV-DIMMERPOINT-1X10A	Rotary Wall-Mount LED Driver

POWER SUPPLY FOR OUTDOOR USE		
	PWR-HLG-60H-42	Mean Well Power Supply HLG 60W 42V
	PWR-HLG-150H-42	Mean Well Power Supply HLG 150W 42V
	PWR-HLG-240H-42	Mean Well Power Supply HLG 240W 42V

CABLE EXTENSIONS		
	CBLEXT-LNR-WR2.1-IP65-3M	3m Length, 3 Core RBW 16AWG Cable Extension with outdoor joiner
	CBLEXT-LNR-WR2.1-IP65-5M	5m Length, 3 Core RBW 16AWG Cable Extension with outdoor joiner
	CBLEXT-LNR-WR2.1-IP65-10M	10m Length, 3 Core RBW 16AWG Cable Extension with outdoor joiner
	CBLEXT-LNR-WR2.1-IP65-20M	20m Length, 3 Core RBW 16AWG Cable Extension with outdoor joiner