



ARIS UG

LINEAR MEDIUM POWER LNR-ARIS UG





The Aris UG is a compact and understated linear architectural luminaire. At 25x25mm in size and available in various lineal lengths, the Aris UG is offered with a Uniform Glowing diffuser where no LEDs are visible along the length of the diffuser.

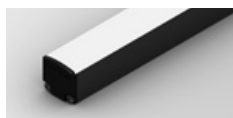
The Aris UG is ideal for direct/visible lighting applications where the source of the luminaire is important to the architectural aesthetic.

POWER

40W

40W / metre

LUMINOUS FLUX



UG · 850 lm / metre

COLOUR TEMPERATURE

2700K

3000K

4000K

COMPACT SIZE

Reduced profile dimensions allows for ease of installation in confined spaces that could not be achieved with previous halogen counterparts. Installed in visible sight the Aris UG also pays respect to the interior design with minimal disruption to the aesthetics.



CUSTOMIZATION AT ITS BEST

The Aris UG is a highly versatile and customizable luminaire. Pick from a number of linear lengths, colour temperatures, profile colours and mounting options. The Aris UG can be used as a marker luminaire, a flood light or even suspended as a linear pendant.



LONG USEFUL OPERATING LIFE

Currently available specification from world's most reputable LED manufacturers states 50,000 hours of continuous operation at the rated current within the operating temperature range to 70% residual light output.



VARIOUS CCT & COLOUR BINNING CONSISTENCY

Product is offered in various Colour Temperatures using tighter bins.



3 YEARS FULL /SOLID WARRANTY

Coolon Luminaires are covered by a solid comprehensive manufacturer's warranty that covers a range of possible defects and performance parameters throughout the duration of the warranty period.



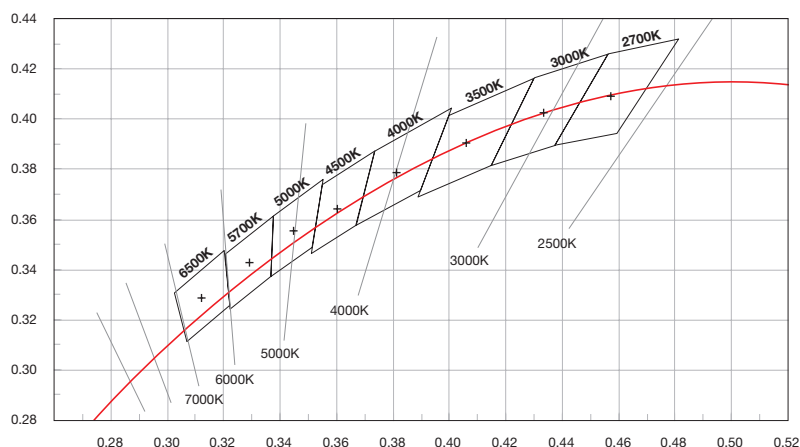
PROUDLY MADE IN AUSTRALIA

Our products are designed and manufactured in Australia. Engineered to perfection, using only the highest quality components and highly skilled labour, each luminaire is assembled and thoroughly tested to ensure that it exceeds the highest standards.

TECHNICAL SPECIFICATIONS

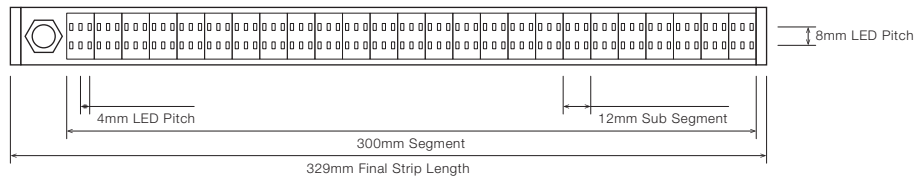
Product Code	LNR-ARIS UG
Description	Aris UG Linear Medium Power Projector
Body	Aluminium Alloy Body
Finish	Powder Coated Black (Standard), Various Colours Available
Cover	Polycarbonate
End Caps	Polycarbonate
Segment Length (S)	300mm
Sub-Segment Length (A)	12mm
Number of Sub-Segments	25
Segment Width	20mm
LED Pitch	4mm (W) x 8mm (H)
LEDs Per Segment	150
LEDs Per Sub Segment	6
Operating Voltage	24VDC
Typical Power Consumption per Segment	12.00W per 300mm Segment
Typical Power Consumption per Metre	40.0W per Metre
Typical Current	500mA per 300mm Segment
Colour Rendering Index (CRI)	80+
Dimmable	Through DRV-DALIPOINT-1X5A, DRV-DALIPOINT-1X10A-IP or DRV-DIMMERPOINT-1X10A (sold separately)
Luminous Flux per Metre (lm/M)	850 lm/Metre
Ambient Operating Temp	Ta -20°C to 50°C
Thermal Management	No
Average Lumen Maintenance @Ta 25°C	70% @ 50,000 Hours
IP Rating	IP40 (Standard)
Max Continuous Connection Length	Please refer to installation limitations

COLOUR BINNING

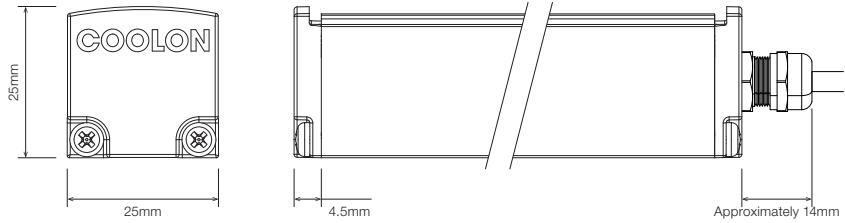


■ DIMENSIONS

For final strip lengths please refer to the "Product Length" table.

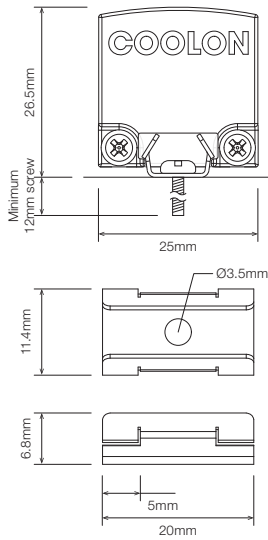


STANDARD PROFILE



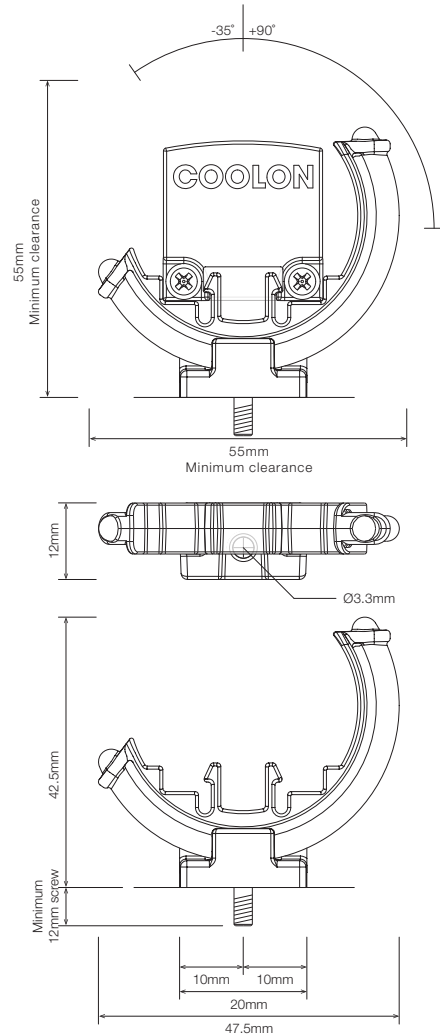
STAINLESS STEEL C-CLIP

Clips are required for every 300mm length of luminaire.



ROTATING CLIP

Clips are required for every 300mm length of luminaire.



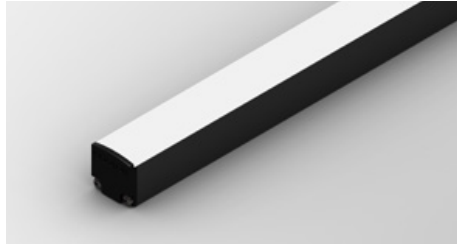
■ PRODUCT LENGTH

FULL SEGMENTS	SUB SEGMENTS	EXACT STRIP LENGTH	FINAL LENGTH
S0	A1	12mm	41mm
S0	A2	24mm	53mm
S0	A3	36mm	65mm
S0	A4	48mm	77mm
S0	A5	60mm	89mm
S0	A6	72mm	101mm
S0	A7	84mm	113mm
S0	A8	96mm	125mm
S0	A9	108mm	137mm
S0	A10	120mm	149mm
S0	A11	132mm	161mm
S0	A12	144mm	173mm
S0	A13	156mm	185mm
S0	A14	168mm	197mm
S0	A15	180mm	209mm
S0	A16	192mm	221mm
S0	A17	204mm	233mm
S0	A18	216mm	245mm
S0	A19	228mm	257mm
S0	A20	240mm	269mm
S0	A21	252mm	281mm
S0	A22	264mm	293mm
S0	A23	276mm	305mm
S0	A24	288mm	317mm
S1	A0	300mm	329mm #
S2	A0	600mm	629mm #
S3	A0	900mm	929mm #
S4	A0	1,200mm	1,229mm #
S5	A0	1,500mm	1,529mm #
S6	A0	1,800mm	1,829mm #
S7	A0	2,100mm	2,129mm #
S8	A0	2,400mm	2,429mm #
S9	A0	2,700mm	2,729mm #
S10	A0	3,000mm	3,029mm #
S11	A0	3,300mm	3,329mm #

Available in additional Sub-Segment Lengths (12mm increment)

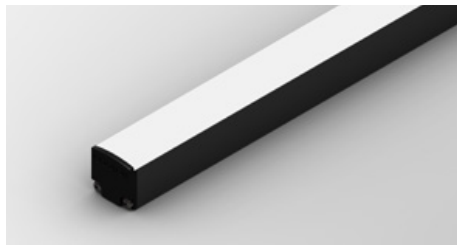
▪ DIFFUSER

SD · Standard Diffuser

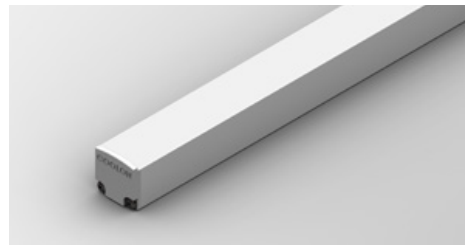


▪ PROFILE COLOUR

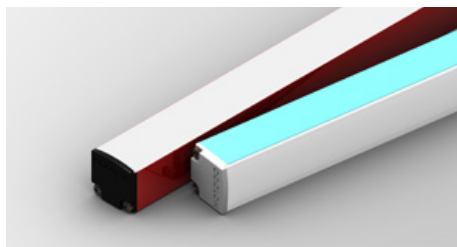
BLK · Black



WHT · White



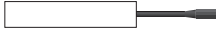



CST · Custom Colour *



* Custom colours available on request

WIRING CONFIGURATION

CONNECTOR TYPE	DRAWING	FEMALE	MALE
WR2OS Wire 2 Core One Side			
SMPLC Sample Type Connector 2.5mm			

- Typical wiring length 250mm.
- Please consult Coolon for details on extension cable between LED fittings, drivers and power supplies.

WIRING COLOUR CODE	
Red	+ VDC
Black	GND
White	Dimming

WIRING POSITION

WB - Wire from back



Ideal for fittings installed back-to-back or limited spaces.

WS - Wire from Side



Ideal for fittings installed individually or vertically.

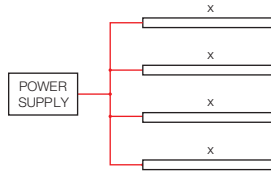
IP RATING

IP40

Protected against solid objects greater than 1mm. No protection against liquids.

■ INSTALLATION LIMITS

SCENARIO 1



MAX. CONTINUOUS CONNECTION LENGTH (X) CONNECTOR TYPE

3,329 mm	With standard 2 bare wires (WR2OS)
----------	------------------------------------

- Please consult Coolon for details on extension cable between LED fittings, drivers and power supplies.

⚠ WARNING

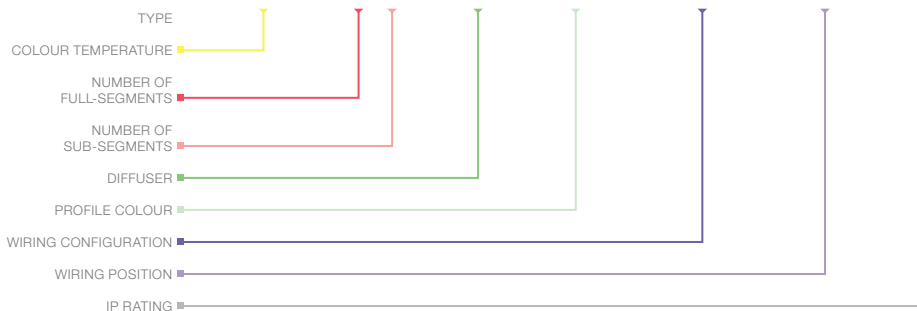
Avoid connecting multiple power supplies into a single circuit, unless they are specifically designed to do so.

✗

✗

ORDERING EXAMPLE

LNR - ARIS UG - 2.7K - S2A0 - SD - BLK - WR2OS - WB - IP40



■ **COLOUR TEMPERATURE** PAGE 04

2.7K	2700K
3.0K	3000K
4.0K	4000K

■ **PRODUCT LENGTH** PAGE 06

FULL SEGMENTS	SUB SEGMENTS
S1	A0
S2	A1
S3	A2
S4	A3
S5	A4
S6	A5
S7	A6
S8	A7
S9	A8
S10	A9
S11	A10
S12	A11
	A12
	A13
	A14
	A15
	A16
	A17
	A18
	A19
	A20
	A21
	A22
	A23
	A24

■ **DIFFUSER** PAGE 07

SD	Standard Diffuser
----	-------------------

■ **PROFILE COLOUR** PAGE 07

BLK	Black (Standard)
WHT	White
CST	Custom Colour *

■ **WIRING CONFIGURATION** PAGE 08

WR2OS	Wire 2 Core One Side
SMPLC	Sample Type Connector 2.5mm

■ **WIRING POSITION** PAGE 08



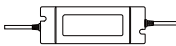

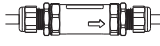
WB	Wire from Back
WS	Wire from Side

■ **IP RATING** PAGE 08

IP40	Indoor Use
------	------------

* Custom colours available on request

■ ACCESSORIES

	PRODUCT CODE	DESCRIPTION
MOUNTING CLIP		
	MC-CCLIP	Stainless Steel C-Clip
	MBR-P25R-BLK	Rotating Clip Mount for Aris Black
	MBR-P25R-WHT	Rotating Clip Mount for Aris White
DRIVER		
	DRV-DALIPOINT-1X5A	Indoor DALI Point 1 Channel Driver 5A
	DRV-DALIPOINT-IP1X10A	Outdoor DALI Point 1 Channel Driver 10A
	DRV-DIMMERPOINT-1X10A	Coolon Wall Dimmer with 10A PWM Output
POWER SUPPLY FOR INDOOR USE		
	PWR-PLN20-24V	Mean Well Power Supply PLN 20W 24V IP64 + Flex & Plug
	PWR-PLN30-24V	Mean Well Power Supply PLN 30W 24V IP64 + Flex & Plug
	PWR-PLN60-24V	Mean Well Power Supply PLN 60W 24V IP64 + Flex & Plug
	PWR-PLN100-24V	Mean Well Power Supply PLN 100W 24V IP64 + Flex & Plug
POWER SUPPLY FOR OUTDOOR USE (IP67)		
	PWR-HLG40-24V	Mean Well Power Supply HLG 40W 24V IP67
	PWR-HLG60-24V	Mean Well Power Supply HLG 60W 24V IP67
	PWR-HLG100-24V	Mean Well Power Supply HLG 100W 24V IP67
	PWR-HLG150-24V	Mean Well Power Supply HLG 150W 24V IP67
	PWR-HLG240-24V	Mean Well Power Supply HLG 240W 24V IP67
	PWR-HLG320-24V	Mean Well Power Supply HLG 320W 24V IP67
CABLE EXTENSIONS		
	CBLEXT-PMAX-IP-3M	3m Length, 3 Core RBW 16AWG Cable Extension with outdoor joiner
	CBLEXT-PMAX-IP-5M	5m Length, 3 Core RBW 16AWG Cable Extension with outdoor joiner
	CBLEXT-PMAX-IP-10M	10m Length, 3 Core RBW 16AWG Cable Extension with outdoor joiner
	CBLEXT-PMAX-IP-20M	20m Length, 3 Core RBW 16AWG Cable Extension with outdoor joiner