

MAX MINI

LINEAR MEDIUM POWER LNR-MAX MINI





The Max Mini LED strip utilizes the latest and most efficient LEDs available today and is offered in a broad range of optical configurations and colour temperatures.

Each segment (240mm) features 6 High Power LEDs, in a robust and compact package.

The Max Mini is Coolon's most compact product with optics offered in an outdoor version.

POWER

LUMINOUS FLUX

33W

33W / metre



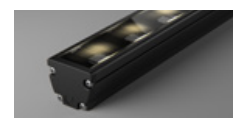
SC - 1600 lm / metre



PC



HL



ML

COLOUR TEMPERATURE

2700K

3000K

3200K

4000K

5000K

COLOURS

Blue

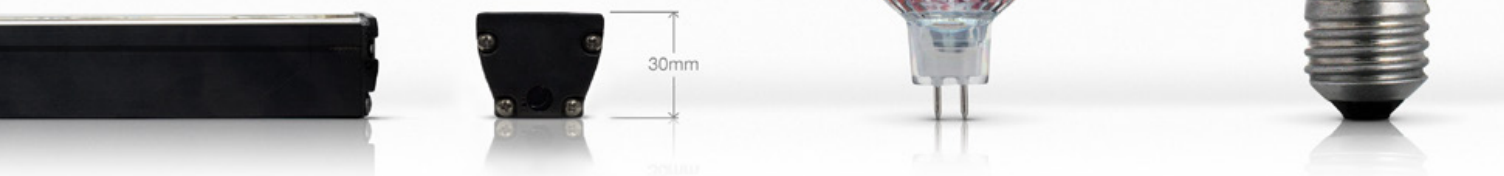
Green

Red

Amber

COMPACT SIZE

Reduced profile dimensions allows for ease of installation in confined spaces that could not be achieved with previous halogen counterparts. Installed in visible sight the Max Mini also pays respect to the interior design with minimal disruption to the aesthetics.



OPTICAL VARIATIONS

The high power range comes in a range of optical variations, offering the ability to maximise the effective performance in each particular application.

L90

LONG OPERATING LIFE

Coolon products use world's most reputable LED manufacturers and the latest available standard to adequately report luminaire lumen maintenance.

We strive to drive LEDs under their nominal current and use state of the art heat dissipation methods, leading to durable electronics.



VARIOUS CCT & COLOUR BINNING CONSISTENCY

Product is offered in various Colour Temperatures using tighter bins.

5
YEARS

5 YEARS WARRANTY

Coolon Luminaires are covered by a solid comprehensive manufacturer's warranty that covers a range of possible defects and performance parameters throughout the duration of the warranty period.



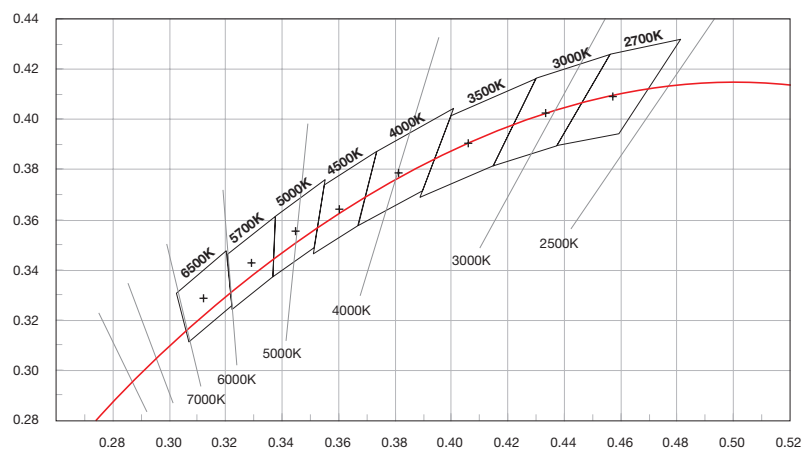
PROUDLY MADE IN AUSTRALIA

Our products are designed and manufactured in Australia. Engineered to perfection, using only the highest quality components and highly skilled labour, each luminaire is assembled and thoroughly tested to ensure that it exceeds the highest standards.

TECHNICAL SPECIFICATIONS

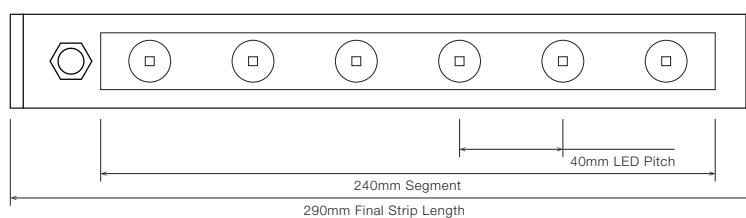
Product Code	LNR-MAX MINI
Description	Max Mini Linear Medium Power Projector
Body	Aluminium Alloy Body
Finish	Powder Coated Black (Standard), Various Colours Available
Cover	Polycarbonate
End Caps	Polycarbonate
Segment Length (S)	240mm
Segment Width	22mm
LED Pitch	40mm
LEDs Per Segment	6
Operating Voltage	24VDC
Typical Power Consumption per Segment	7.92W per 240mm Segment
Typical Power Consumption per metre	33.0W per metre
Typical Current	330mA per 240mm Segment
Colour Rendering Index (CRI)	90+
Dimmable	Through CTR-A2PWM 0-10V, CTR-DIMMERLOGIC, CTR-DALILOGIC or CTR-DALILOGIC-IP (sold separately)
Luminous Flux per Metre (lm/m)	1600lm/metre
External Heatsink Required	No
Ambient Operating Temp	Ta -10°C to 50°C
Thermal Operating	Yes (Active)
Reported Lumen Maintenance TM21-11 (@ Ts = 85°C, If = 500mA)	L70 (18K) > 109,000 hours L90 (18K) > 103,000 hours Max Mini max. operating values (@ Ts = 50°C, If = 325mA)
IP Rating	IP40 (Standard), up to IP65 (10% Lumen depreciation on IP65 products)
Max Continuous Connection Length	Please refer to installation limitations

COLOUR BINNING

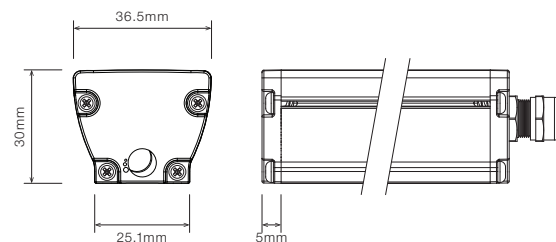


DIMENSIONS

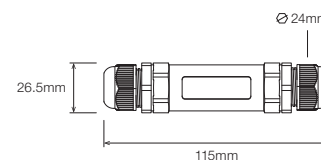
For final strip lengths please refer to the "Product Length" table.



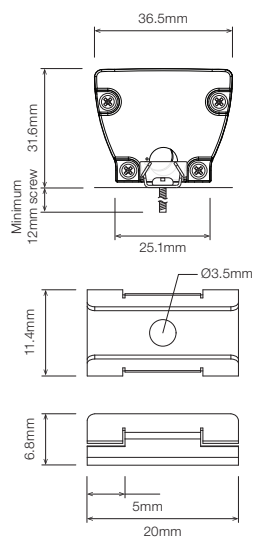
STANDARD PROFILE



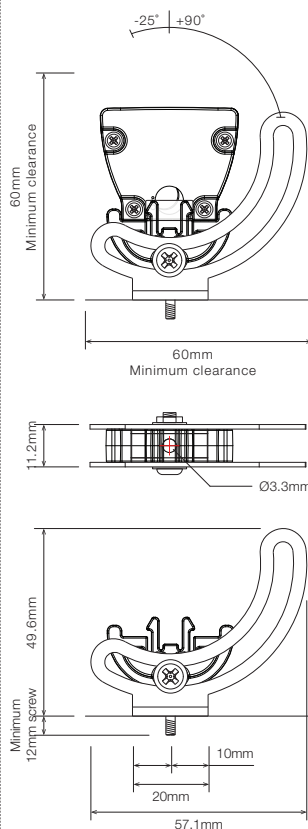
CABLE EXTENSION JOINER



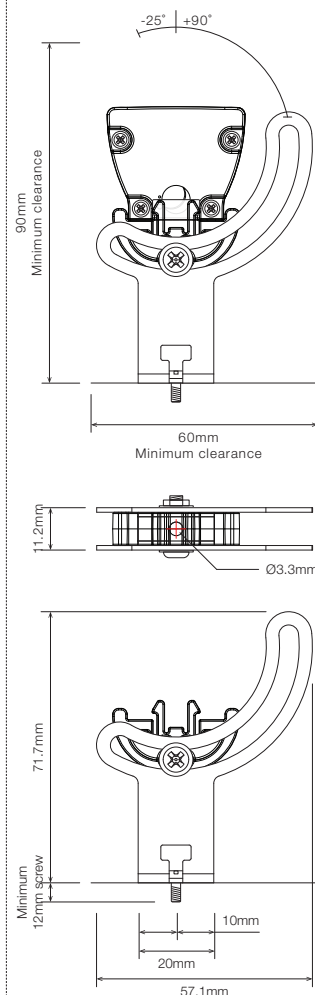
STAINLESS STEEL C-CLIP ¹



ROTATING MOUNTING BRACKET ¹



ELEVATED ROTATING MOUNTING BRACKET ^{1 2}




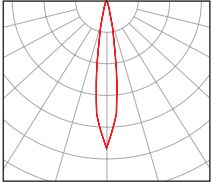

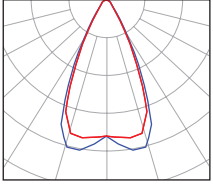

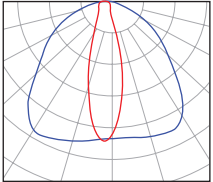

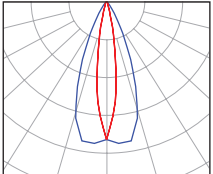
¹ Recommended spacing between Mounting Brackets is maximum 500mm and Mounting Clips is maximum 300mm.

² Elevated rotating bracket is the only suitable option when wire from back is required.

■ PRODUCT LENGTH

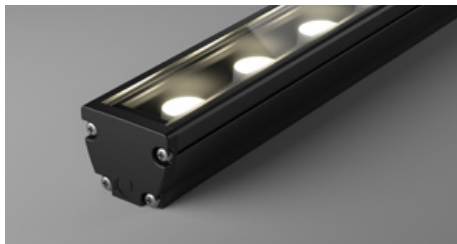
FULL SEGMENTS	EXACT STRIP LENGTH	FINAL LENGTH
S1	240mm	290mm
S2	480mm	530mm
S3	720mm	770mm
S4	960mm	1,010mm
S5	1,200mm	1,250mm
S6	1,440mm	1,490mm
S7	1,680mm	1,730mm
S8	1,920mm	1,970mm
S9	2,160mm	2,210mm
S10	2,400mm	2,450mm
S11	2,640mm	2,690mm
S12	2,880mm	2,930mm

■ POLAR DISTRIBUTION

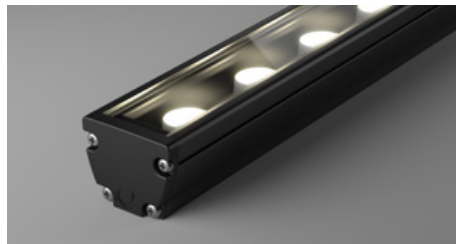
OPTIC	BEAM ANGLE	POLAR DISTRIBUTION
L07 	14° Beam	
L25 	50° Beam	
F5010 	Flare 100° x 20° Beam	
O209 	Oval 40° x 18° Beam	

■ DIFFUSER

SC • Standard Clear Cover



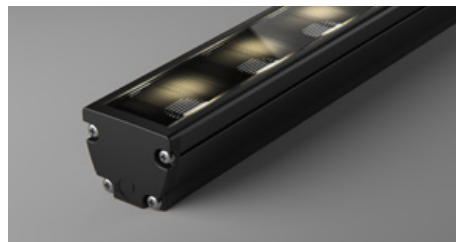
PC • Polyurethane Clear ¹



HL • Honeycomb Louvre

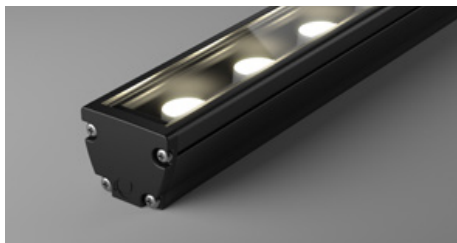


ML • Micro Louvre [★]

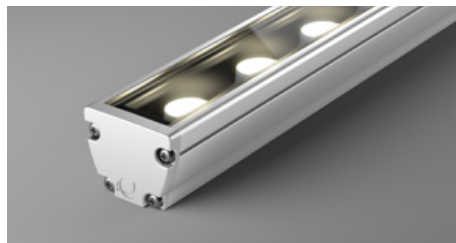


■ PROFILE COLOUR

BLK • Black



WHT • White









CST • Custom Colour ²



¹ Polyurethane Clear and Micro Louvre applicable to IP65 only

² Custom colours available on request

■ WIRING CONFIGURATION

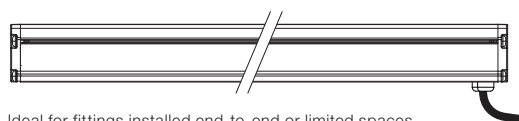
CONNECTOR TYPE	DRAWING	MALE	FEMALE
WR2.10S Wire 2+1 Core One Side			
OC2.2MO Outdoor Connector 2.2pin Male Only			
SMPLC.1 Sample Type Connector 2.5mm			

- Typical wiring length 1,000mm.
- Please consult Coolon for details on extension cable between LED fittings, drivers and power supplies.

WIRING COLOUR CODE	
Red	+ VDC
Black	GND
White	Dimming

■ WIRING POSITION

WB - Wire from back



Ideal for fittings installed end-to-end or limited spaces.

WS - Wire from Side



Ideal for fittings installed individually or vertically.

■ IP RATING

IP40

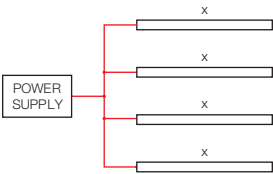
Protected against solid objects greater than 1mm. No protection against liquids.

IP65

Fully protected against dust. Protected against water jets from all directions.

■ INSTALLATION LIMITS

SCENARIO 1



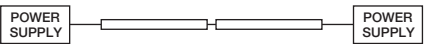
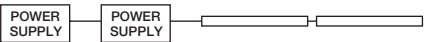
MAX. CONTINUOUS CONNECTION LENGTH (X)	CONNECTOR TYPE
---------------------------------------	----------------

2,930 mm	With standard 2+1 bare wires (WR2.10S)
----------	--

- Please consult Coolon for details on extension cable between LED fittings, drivers and power supplies.

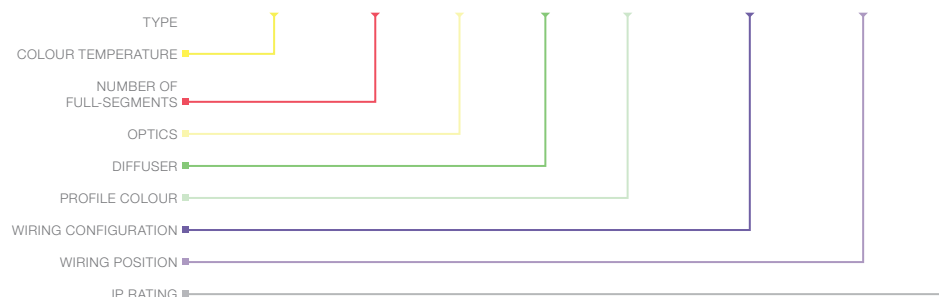
⚠ WARNING

Avoid connecting multiple power supplies into a single circuit, unless they are specifically designed to do so.



ORDERING EXAMPLE

LNR - MAX MINI - 3.5KCRI - S2 - O209 - SC - BLK - WR2.1OS - WB - IP40



■ COLOUR TEMPERATURE PAGE 04

2.7KCRI	2700K CRI 90
3.0KCRI	3000K CRI 90
3.5KCRI	3500K CRI 90
4.0KCRI	4000K CRI 90
5.0KCRI	5000K CRI 90

■ PRODUCT LENGTH PAGE 06

S1	290mm
S2	530mm
S3	770mm
S4	1010mm
S5	1,250mm
S6	1,490mm
S7	1,730mm
S8	1,970mm
S9	2,210mm
S10	2,450mm
S11	2,690mm
S12	2,930mm

■ OPTICS PAGE 06

L07	14° Beam
L25	50° Beam
F5010	Flare 100° x 20° Beam
O209	Oval 40° x 18° Beam

■ DIFFUSER PAGE 07

SC	Standard Clear
PC	Polyurethane Clear ¹
HL	Honeycomb Louvre
ML	Micro Louvre ¹

■ PROFILE COLOUR PAGE 07

BLK	Black (Standard)
WHT	White
CST	Custom Colour ²

■ WIRING CONFIGURATION PAGE 08

WR2.1OS	Wire 2+1 Core One Side
OC2.2MO	Outdoor Connector 2.2pin Male Only
SMPLC.1	Sample Type Connector 2.5mm

■ WIRING POSITION PAGE 08

WB	Wire from Back
WS	Wire from Side


■ IP RATING PAGE 08

IP40	Indoor Use
IP65	Outdoor Use


¹ Polyurethane Clear and Micro Louvre applicable to IP65 only


² Custom colours available on request


■ ACCESSORIES

	PRODUCT CODE	DESCRIPTION
	MC-CCLIP	Stainless Steel C-Clip
	MBR-PMAX-BLK	Rotating Mounting Bracket for Max Mini - Black
	MBR-PMAX-WHT	Rotating Mounting Bracket for Max Mini - White
	MBR-PMAX-E-BLK	Elevated Rotating Mounting Bracket for Max Mini - Black
	MBR-PMAX-E-WHT	Elevated Rotating Mounting Bracket for Max Mini - White

* Recommended spacing between Mounting Brackets is maximum 500mm and Mounting Clips is maximum 300mm.

	PRODUCT CODE	DESCRIPTION
	CTR-A2PWM 0-10V	Analogue to PWM converter for 0-10V dimming signal
	CTR-DIMMERLOGIC	Coolon Universal Wall Dimmer with 0-10V and PWM Logic Output
	CTR-DALI-LOGIC	Indoor DALI Point 1 channel Driver with PWM Logic Output
	CTR-DALILOGIC-IP	Outdoor DALI Point 1 channel Driver with PWM Logic Output

	PRODUCT CODE	DESCRIPTION
	PWR-HLG40-24V	Mean Well Power Supply HLG 40W 24V
	PWR-HLG60-24V	Mean Well Power Supply HLG 60W 24V
	PWR-HLG100-24V	Mean Well Power Supply HLG 100W 24V
	PWR-HLG150-24V	Mean Well Power Supply HLG 150W 24V
	PWR-HLG240-24V	Mean Well Power Supply HLG 240W 24V
	PWR-HLG320-24V	Mean Well Power Supply HLG 320W 24V

	PRODUCT CODE	DESCRIPTION
	CBLEXT-LNR-WR2.1-IP65-3M	3m Length, 3 Core RBW 16AWG Cable Extension with outdoor joiner
	CBLEXT-LNR-WR2.1-IP65-5M	5m Length, 3 Core RBW 16AWG Cable Extension with outdoor joiner
	CBLEXT-LNR-WR2.1-IP65-10M	10m Length, 3 Core RBW 16AWG Cable Extension with outdoor joiner
	CBLEXT-LNR-WR2.1-IP65-20M	20m Length, 3 Core RBW 16AWG Cable Extension with outdoor joiner