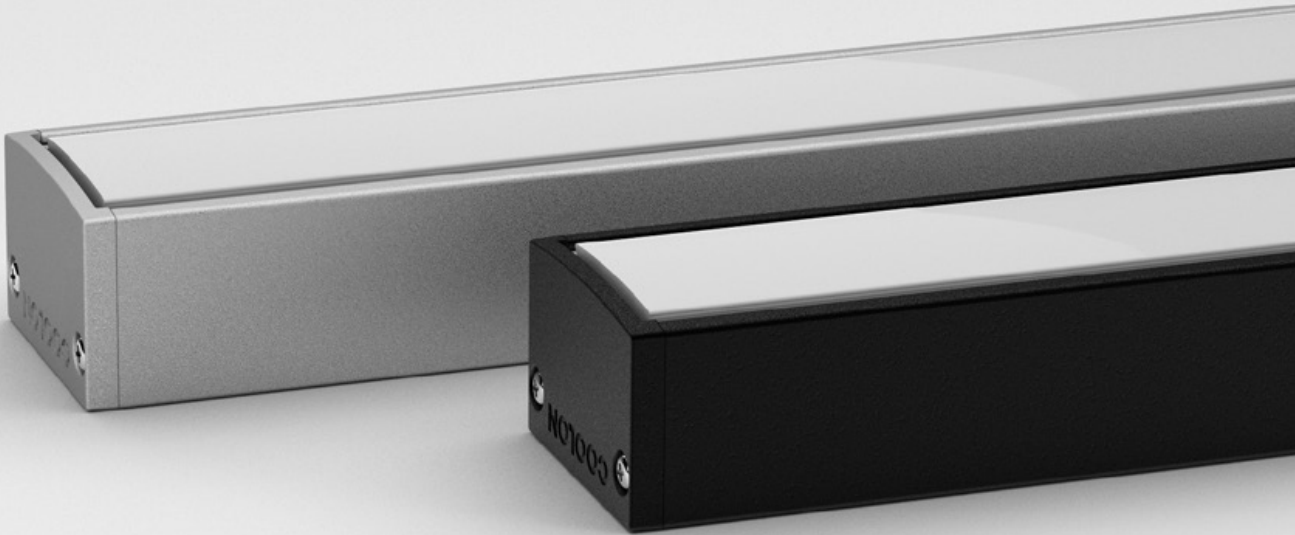


# ELECTRO

LINEAR MEDIUM POWER LNR-ELECTRO





The Electro utilises the most advanced LED technology for optimum output and efficiency. Available in two wattages (22W and 40W), various length and finish options.

The Electro is perfect for indoor and outdoor applications, with an option to be fully potted with our specially formulated polyurethane material for unbeatable durability and resistance against any exterior conditions.

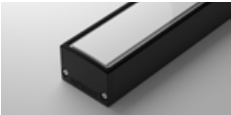
The quality of the LEDs are enhanced by the uniform glowing diffuser which allows for perfectly even lighting. The overall design is as compact as possible allowing for discreet installation with no compromise on performance.

**POWER**

**LUMINOUS FLUX**

**22W**

22W / metre



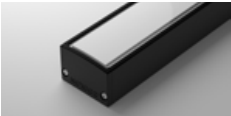
**SD** • 1,600 lm / metre



**PT** • 1,600 lm / metre

**40W**

40W / metre



**SD** • 2,000 lm / metre



**PT** • 2,000 lm / metre

**COLOUR TEMPERATURE**

2700K

3000K

4000K

# ENGINEERED TO LAST

The Electro has been engineered for maximum longevity in both indoor and outdoor environments. Manufactured using the highest quality materials and latest technology available, the Electro offers outstanding reliability even in the harshest environments.

## UNIFORM GLOW

The Electro is offered in various configurations as well as "Uniform Glow", a completely uniformly illuminated diffuser with no visible scalloping on the diffuser or the illuminated surface.



### LONG OPERATING LIFE

Coolon products use world's most reputable LED manufacturers and the latest available standard to adequately report luminaire lumen maintenance.

We strive to drive LEDs under their nominal current and use state of the art heat dissipation methods, leading to durable electronics.



### VARIOUS CCT & COLOUR BINNING CONSISTENCY

Product is offered in various Colour Temperatures using tighter bins.



### 5 YEARS WARRANTY

Coolon Luminaires are covered by a solid comprehensible manufacturer's warranty that covers a range of possible defects and performance parameters throughout the duration of the warranty period.



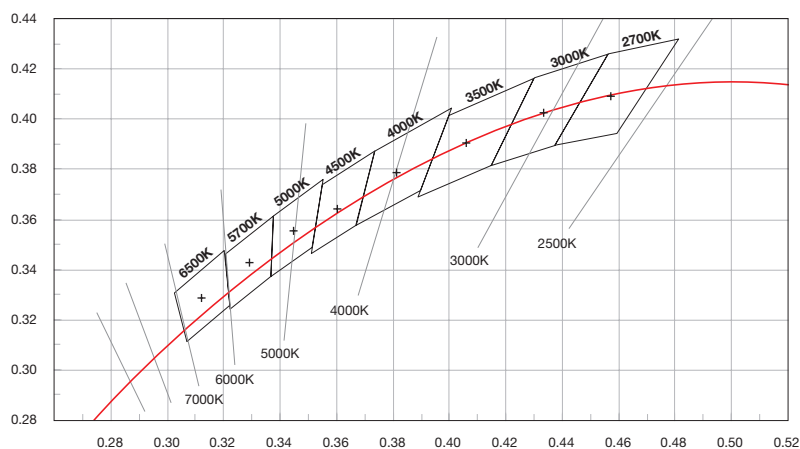
### PROUDLY MADE IN AUSTRALIA

Our products are designed and manufactured in Australia. Engineered to perfection, using only the highest quality components and highly skilled labour, each luminaire is assembled and thoroughly tested to ensure that it exceeds the highest standards.

## ■ TECHNICAL SPECIFICATIONS

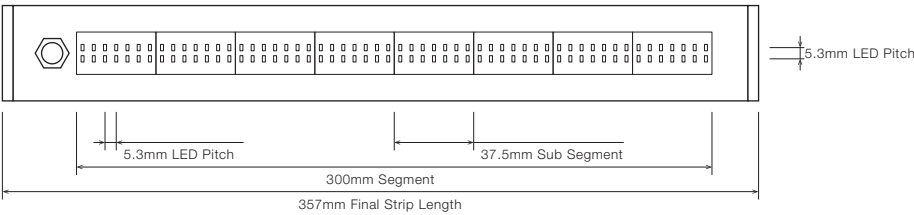
	22W VERSION	40W VERSION
Product Code	LNR-ELECTRO	
Description	Electro Linear Medium Power	
Body	Aluminium Alloy Body	
Finish	Brushed Natural Aluminium (Standard), Various Colours Available	
Cover	Polycarbonate (PC) Diffused	
End Caps	Polycarbonate (PC)	
Segment Length (S)	300mm	
Sub-Segment Length (A)	37.5mm	
Number of Sub-Segments	8	
Segment Width	26.5mm	
LED Pitch	5.3mm (W) x 5.3mm (H)	
LEDs Per Segment	112	
LEDs Per Sub Segment	14	
Operating Voltage	42VDC	
Typical Power Consumption per Segment	6.72W per 300mm Segment	12.00W per 300mm Segment
Typical Power Consumption per Metre	22W per Metre	40W per Metre
Typical Current	100mA per 300mm Segment	280mA per 300mm Segment
Colour Rendering Index (CRI)	80+	
Dimmable	Through DRV-DALIPOINT-1X5A, DRV-DALIPOINT-1X10A-IP or DRV-DIMMERPOINT-1X10A (sold separately)	
Luminous Flux per Metre (lm/M)	1,600lm / Metre	2,000lm / Metre
External Heatsink Required	No	
Ambient Operating Temp	Ta -20°C to 50°C	
Thermal Operating	Yes (Active)	
Reported Lumen Maintenance TM21-11 (@ Ts = 55°C, If = 65mA)	L70 (12K) > 72,000 hours L90 (12K) > 59,000 hours	
	Electro max. operating values (@ Ts = 40°C, If = 35mA)	
IP Rating	IP40 (Standard), up to IP65	
Max Continuous Connection Length	Please refer to installation limitations	

## ■ COLOUR BINNING

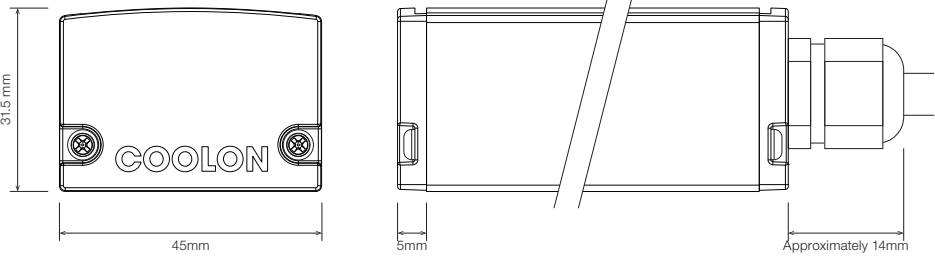


■ DIMENSIONS

For final strip lengths please refer to the "Product Length" table.

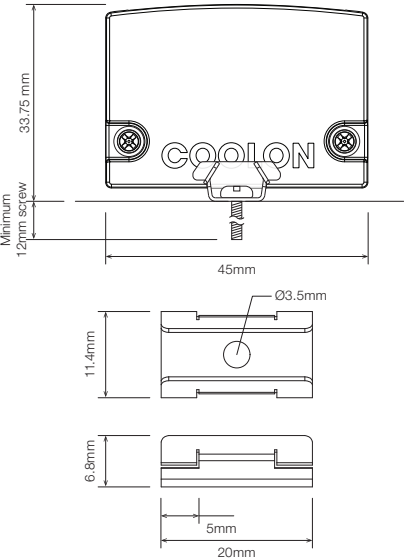


**STANDARD PROFILE**



**STAINLESS STEEL C-CLIP**

Clips are required for every 300mm length of luminaire.



■ PRODUCT LENGTH

FULL SEGMENTS	SUB SEGMENTS	FINAL LENGTH
S0	A1	94.5mm
S0	A2	132mm
S0	A3	169.5mm
S0	A4	207mm
S0	A5	244.5mm
S0	A6	282mm
S0	A7	319.5mm
S1	A0	357mm
S1	A1	394.5mm
S1	A2	432mm
S1	A3	469.5mm
S1	A4	507mm
S1	A5	544.5mm
S1	A6	582mm
S1	A7	619.5mm
S2	A0	657mm
S2	A1	694.5mm
S2	A2	732mm
S2	A3	769.5mm
S2	A4	807mm
S2	A5	844.5mm
S2	A6	882mm
S2	A7	919.5mm
S3	A0	957mm
S3	A1	994.5mm
S3	A2	1032mm
S3	A3	1069.5mm
S3	A4	1107mm
S3	A5	1144.5mm
S3	A6	1182mm
S3	A7	1219.5mm
S4	A0	1257mm
S4	A1	1294.5mm
S4	A2	1332mm
S4	A3	1369.5mm
S4	A4	1407mm
S4	A5	1444.5mm
S4	A6	1482mm
S4	A7	1519.5mm
S5	A0	1557mm
S5	A1	1594.5mm
S5	A2	1632mm
S5	A3	1669.5mm
S5	A4	1707mm
S5	A5	1744.5mm
S5	A6	1782mm
S5	A7	1819.5mm
S6	A0	1857mm

FULL SEGMENTS	SUB SEGMENTS	FINAL LENGTH
S6	A1	1894.5mm
S6	A2	1932mm
S6	A3	1969.5mm
S6	A4	2007mm
S6	A5	2044.5mm
S6	A6	2082mm
S6	A7	2119.5mm
S7	A0	2157mm
S7	A1	2194.5mm
S7	A2	2232mm
S7	A3	2269.5mm
S7	A4	2307mm
S7	A5	2344.5mm
S7	A6	2382mm
S7	A7	2419.5mm
S8	A0	2457mm
S8	A1	2494.5mm
S8	A2	2532mm
S8	A3	2569.5mm
S8	A4	2607mm
S8	A5	2644.5mm
S8	A6	2682mm
S8	A7	2719.5mm
S9	A0	2757mm
S9	A1	2794.5mm
S9	A2	2832mm
S9	A3	2869.5mm
S9	A4	2907mm
S9	A5	2944.5mm
S9	A6	2982mm

■ DIFFUSER

**SD** • Standard Diffused <sup>1</sup>



**PT** • Polyurethane Translucent <sup>2</sup>

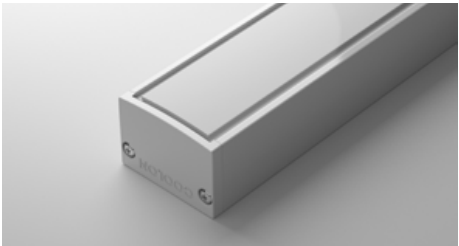


■ PROFILE COLOUR

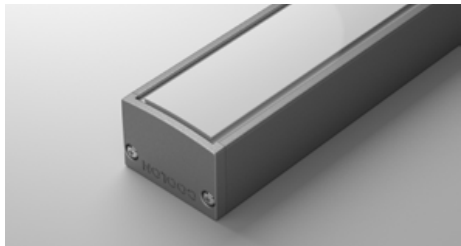
**BLK** • Black (Standard)



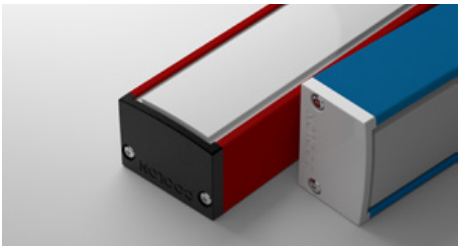
**WHT** • White



**BNA** • Brushed Natural Aluminium



**CST** • Custom Colour <sup>3</sup>



<sup>1</sup> Standard Diffuser applicable to IP40 only  
<sup>2</sup> Polyurethane Translucent applicable to IP65 only  
<sup>3</sup> Custom colours available on request

WIRING CONFIGURATION

CONNECTOR TYPE	DRAWING	MALE	FEMALE
WR2OS Wire 2 Core One Side			
OC2.1MO Outdoor Connector 2.1pin Male Only			
SMPLC Sample Type Connector 2.5mm			

- Typical wiring length 1,000mm.
- Please consult Coolon for details on extension cable between LED fittings, drivers and power supplies.

WIRING COLOUR CODE	
Red	+ VDC
Black	GND

WIRING POSITION

**WB** - Wire from back

Ideal for fittings installed back-to-back or limited spaces.

**WS** - Wire from Side

Ideal for fittings installed individually or vertically.

IP RATING

IP40

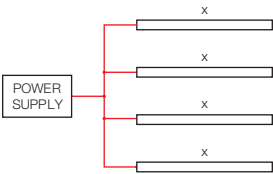
Protected against solid objects greater than 1mm. No protection against liquids.

IP65

Fully protected against dust. Protected against water jets from all directions.

■ INSTALLATION LIMITS

SCENARIO 1



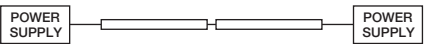
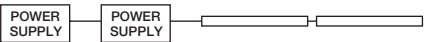
MAX. CONTINUOUS CONNECTION LENGTH (X) CONNECTOR TYPE

2,982 mm With standard 2 bare wires (WR20S)

- Please consult Coolon for details on extension cable between LED fittings, drivers and power supplies.

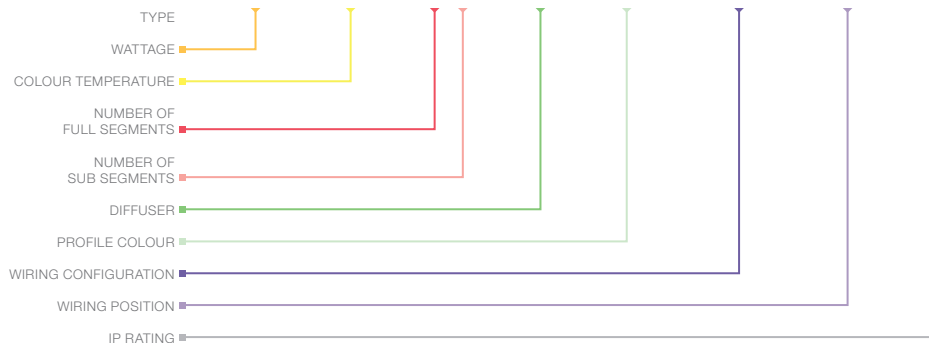
 **WARNING**

Avoid connecting multiple power supplies into a single circuit, unless they are specifically designed to do so.



## ORDERING EXAMPLE

**LNR - ELECTRO - 22W - 3.0K - S2A1 - SD - BLK - WR2OS - WB - IP40**



### ■ WATTAGE PAGE 04

22W	22W per metre
40W	40W per metre

### ■ COLOUR TEMPERATURE PAGE 04

2.7K	2700K CRI 80
2.7KCRI	2700K CRI 90
3.0K	3000K CRI 80
3.0KCRI	3000K CRI 90
4.0K	4000K CRI 80
4.0KCRI	4000K CRI 90

### ■ PRODUCT LENGTH PAGE 06

FULL SEGMENTS	SUB SEGMENTS
S1	A0
S2	A1
S3	A2
S4	A3
S5	A4
S6	A5
S7	A6
S8	A7
S9	

### ■ DIFFUSER PAGE 07

SD	Standard Diffused <sup>1</sup>
PT	Polyurethane Translucent <sup>2</sup>

### ■ PROFILE COLOUR PAGE 07

BLK	Black (Standard)
WHT	White
BNA	Brushed Natural Aluminium
CST	Custom Colour <sup>3</sup>

### ■ WIRING CONFIGURATION PAGE 08

WR2OS	Wire 2 Core One Side
OC2.1MO	Outdoor Connector 2.1pin Male Only
SMPLC	Sample Type Connector 2.5mm

### ■ WIRING POSITION PAGE 08

WB	Wire from Back
WS	Wire from Side

### ■ IP RATING PAGE 08



IP40	Indoor Use
IP65	Outdoor Use

<sup>1</sup> Standard Diffuser applicable to IP40 only

<sup>2</sup> Polyurethane Translucent applicable to IP65 only

<sup>3</sup> Custom colours available on request

■ ACCESSORIES

	PRODUCT CODE	DESCRIPTION
MOUNTING CLIP *		
	MC-C-CLIP	Stainless Steel C-Clip
	* Recommended spacing between Mounting Clips is maximum 300mm.	
DRIVER		
	DRV-DALIPOINT-1X5A	DALI 5 Amps 1 Channel LED Driver
	DRV-DALIPOINT-1X10A-IP	DALI 10 Amps 1 Channel Outdoor LED Driver
	DRV-DIMMERPOINT-1X10A	Rotary Wall-Mount LED Driver
POWER SUPPLY FOR OUTDOOR USE (IP67)		
	PWR-HLG80-42V-IP	Mean Well Power Supply HLG 80W 42V IP67
	PWR-HLG150-42V-IP	Mean Well Power Supply HLG 150W 42V IP67
	PWR-HLG240-42V-IP	Mean Well Power Supply HLG 240W 42V IP67