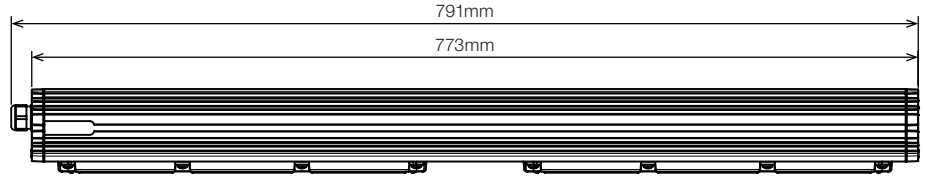
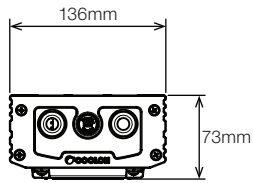
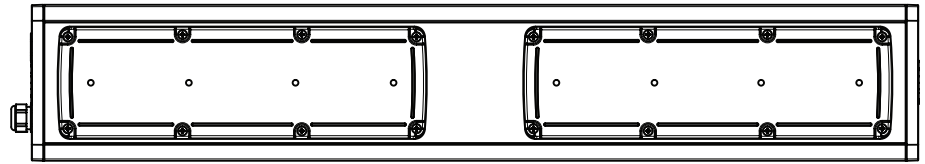
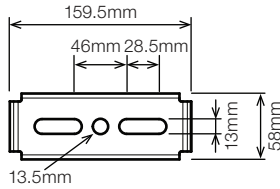


BRN Batten Light



Bracket Footprint



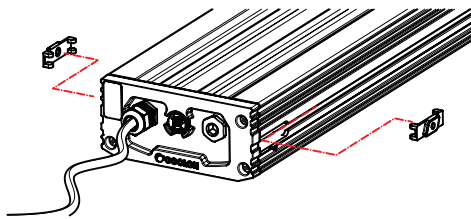
Technical Characteristics

Voltage In 120-240 VAC 50/60Hz	Power 70W @ 230VAC	IP/IK Rating IP66 / IK09	Operating Temperature -20°C ≤ T _{amb} ≤ 50°C
--	------------------------------	------------------------------------	---

INSTALLATION INSTRUCTIONS

Step 1

Slide in the rhomb nut into the channel through the opening (x4).



Step 2

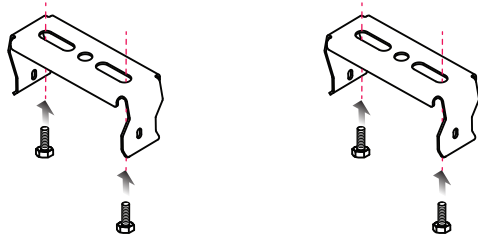
Slide the rhomb nut to final position; approx 100mm from the end cap.



INSTALLATION INSTRUCTIONS - SURFACE MOUNTED

Step A

Mount stainless steel brackets to surface using suitable bolts.



Step B

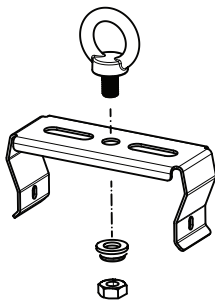
Align the unit rhomb nut holes with the brackets. Secure with supplied screws. Tighten until the bracket is secured (x4).



INSTALLATION INSTRUCTIONS - SUSPENSION KIT

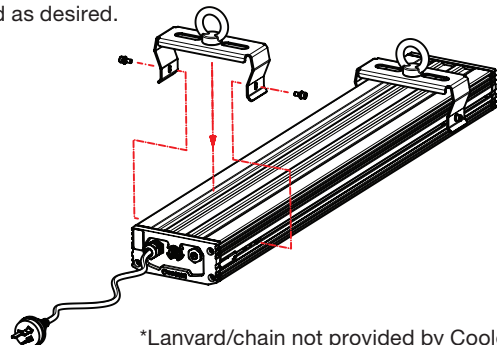
Step A

Pre-assemble the eyebolt as indicated in each bracket. Tighten the nut until the eyebolt does not rotate.



Step B

Put on the bracket and align with the rhomb nut holes. Secure with supplied screws. Tighten until the bracket is secured (x4). Suspend as desired.



*Lanyard/chain not provided by Coolon.



Once the product has reached end of life, unit is to be disposed of in accordance to local e-waste laws or regulations. Do not dispose of these products as unsorted municipal waste: take them for recycling. For information on your nearest recycling point, check with your local waste authority.