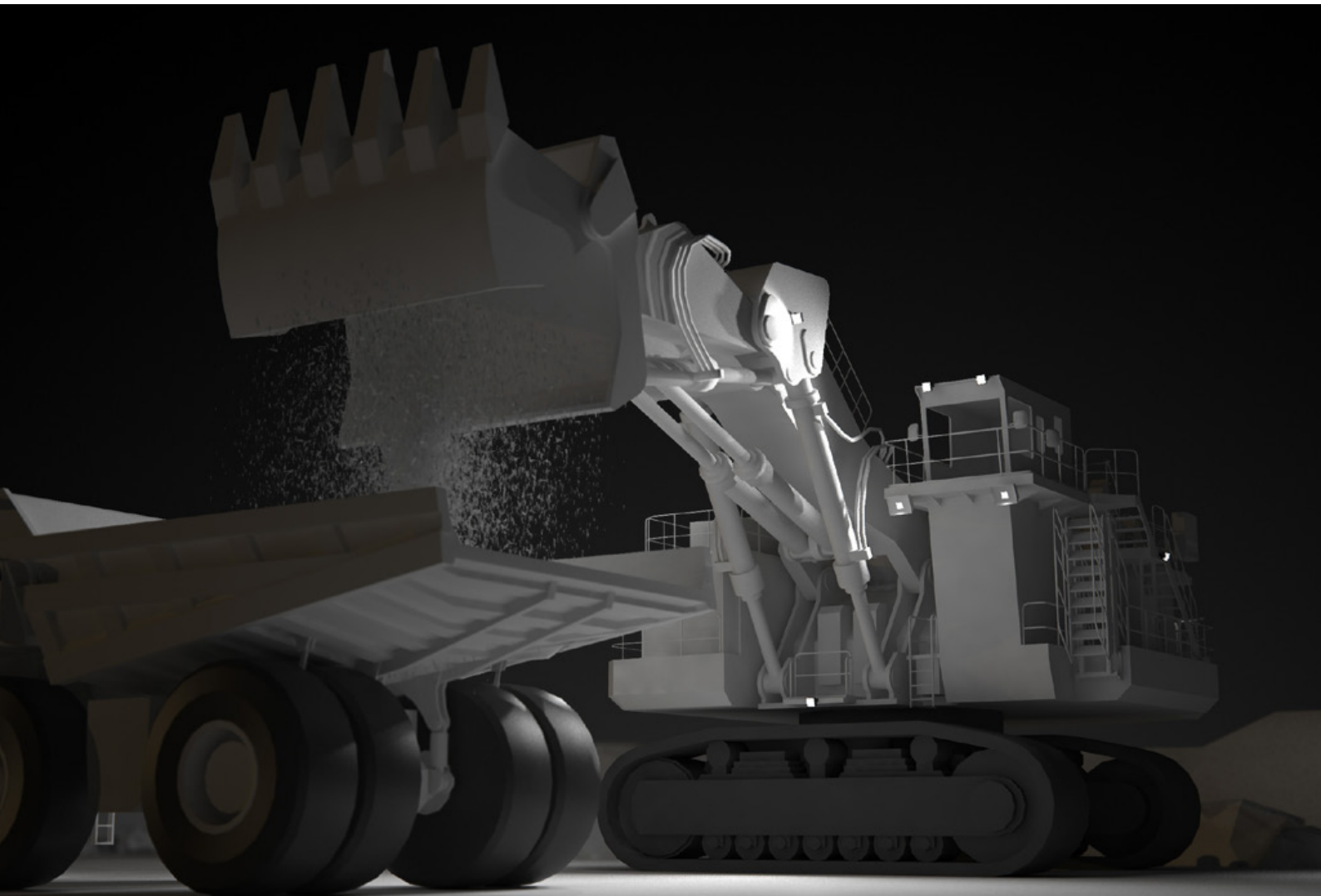


HITACHI

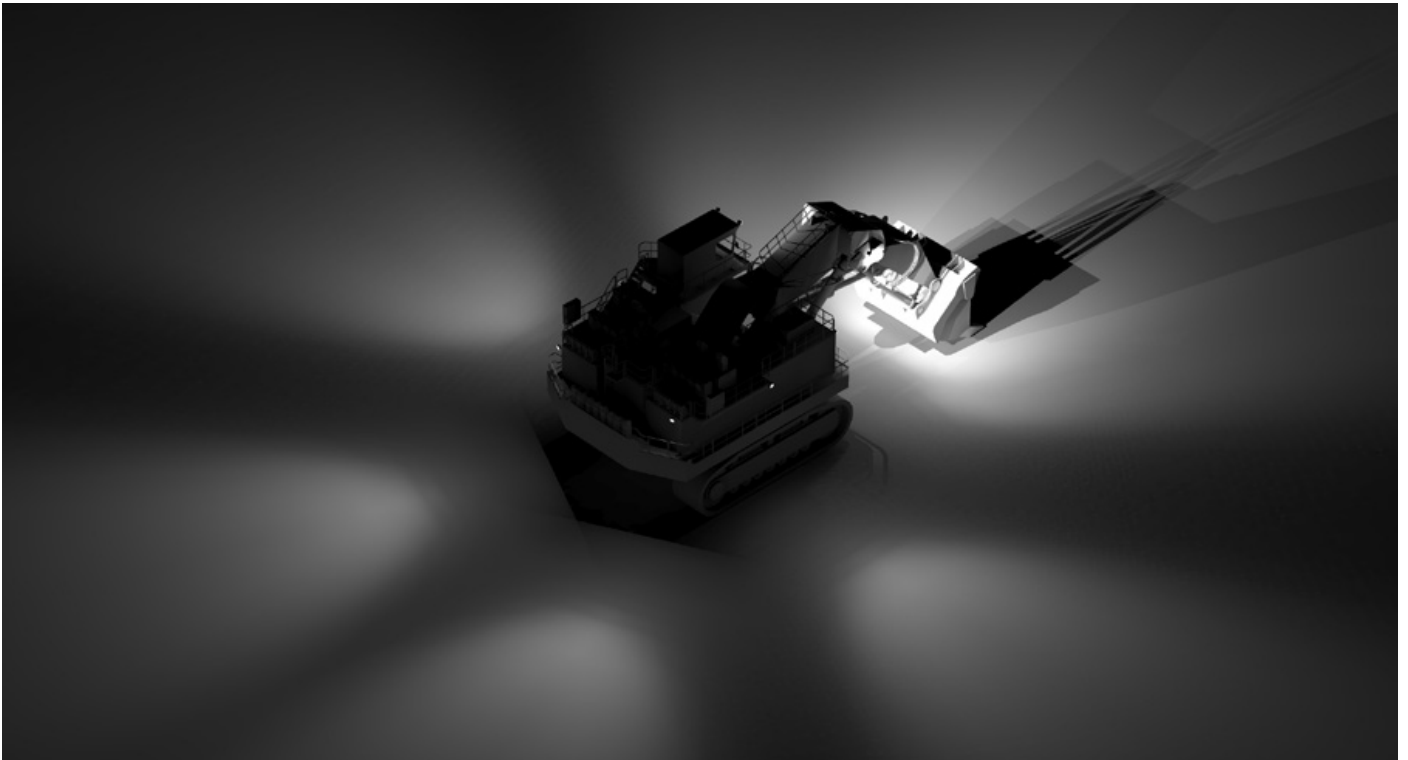
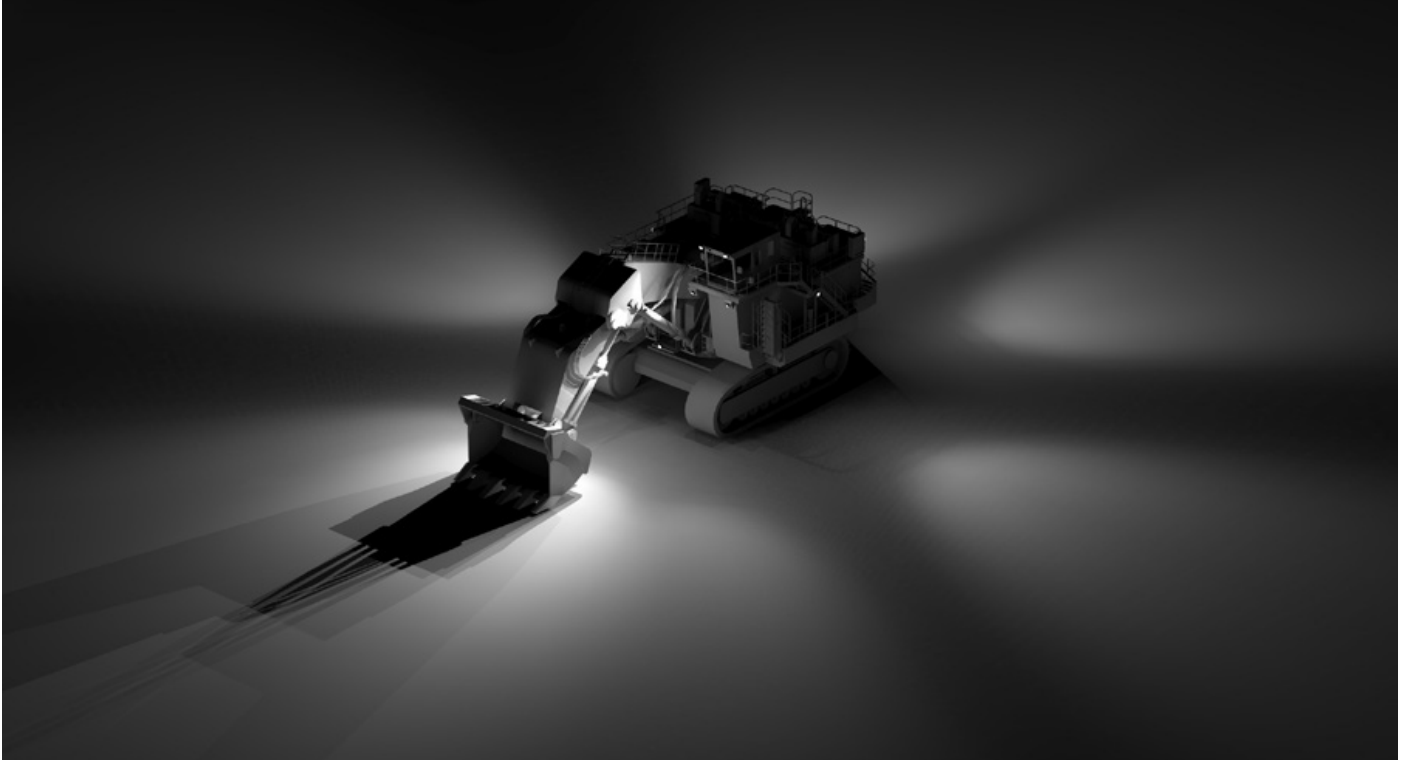
EX8000

Lighting Design Simulation Report



SIMULATION

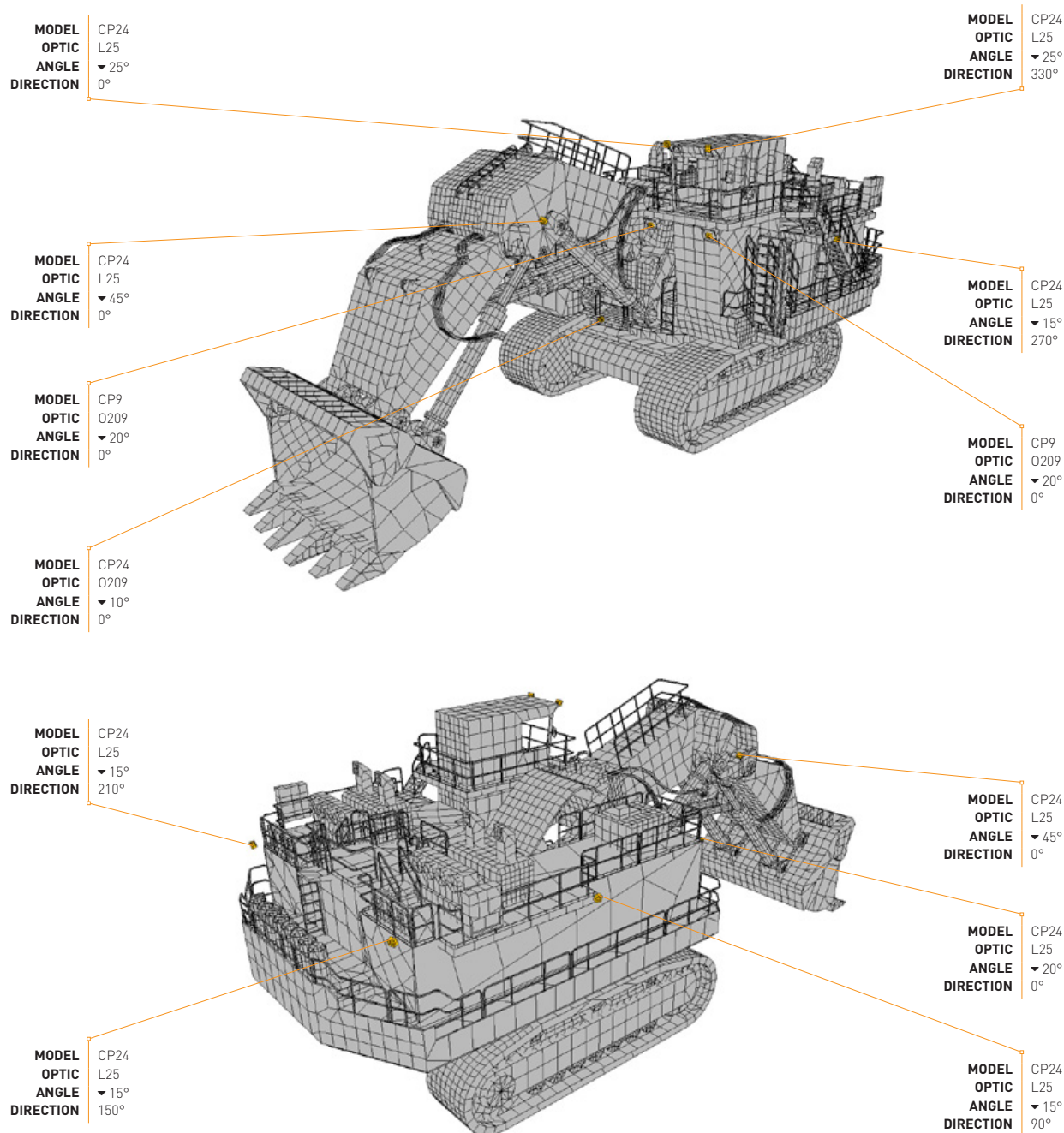
HITACHI EX8000
OPTION A



LUMINAIRE SCHEDULE

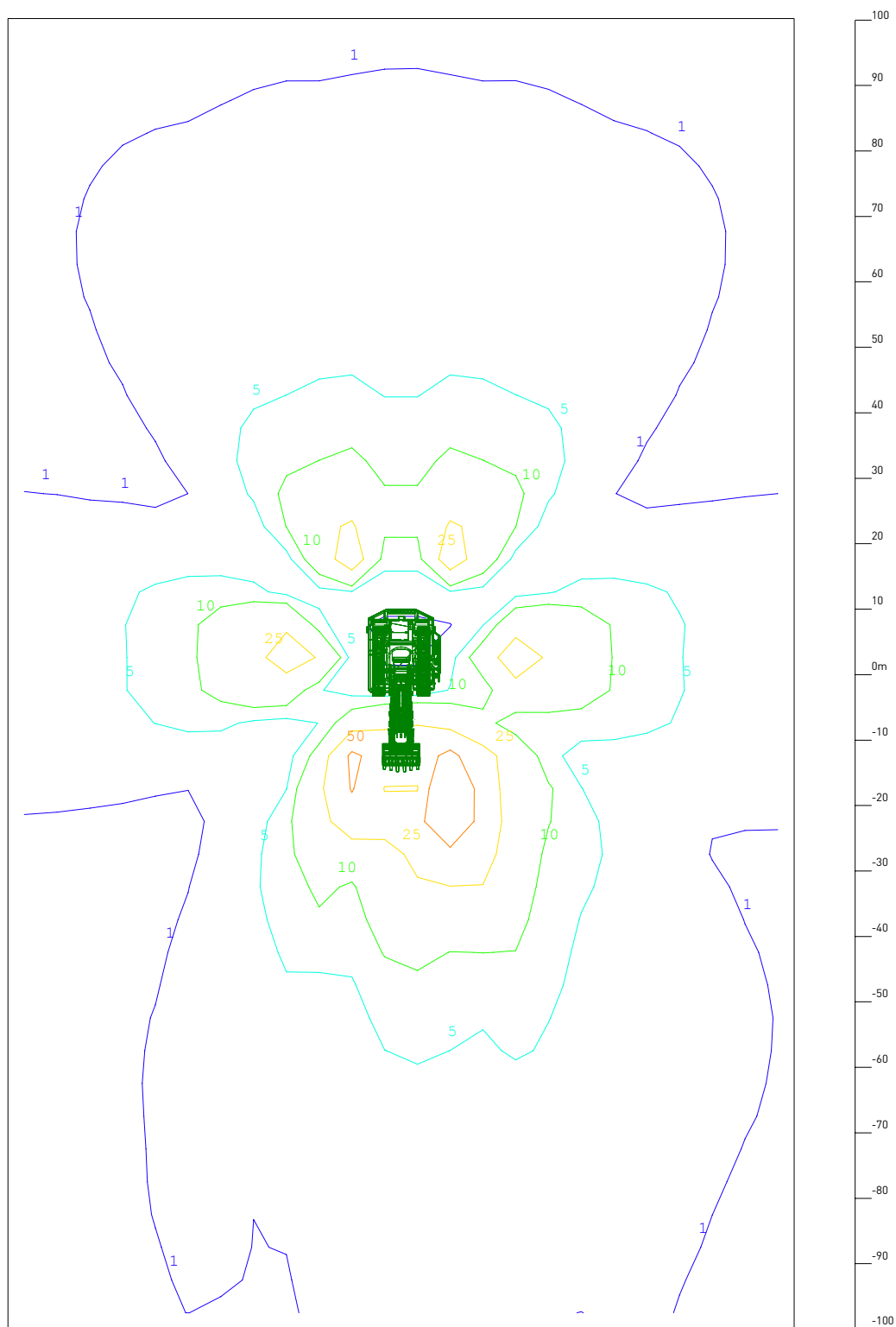
HITACHI EX8000 OPTION A

Model No.	Luminaire	Optic Type	Quantity
CP24-O209	CP24 Flood Light	O209 - 40° x 18° Beam Angle	1
CP24-L25	CP24 Flood Light	L25 - 50° Beam Angle	9
CP9-O209	CP9 Flood Light	O209 - 40° x 18° Beam Angle	2



ISOLINE VIEW

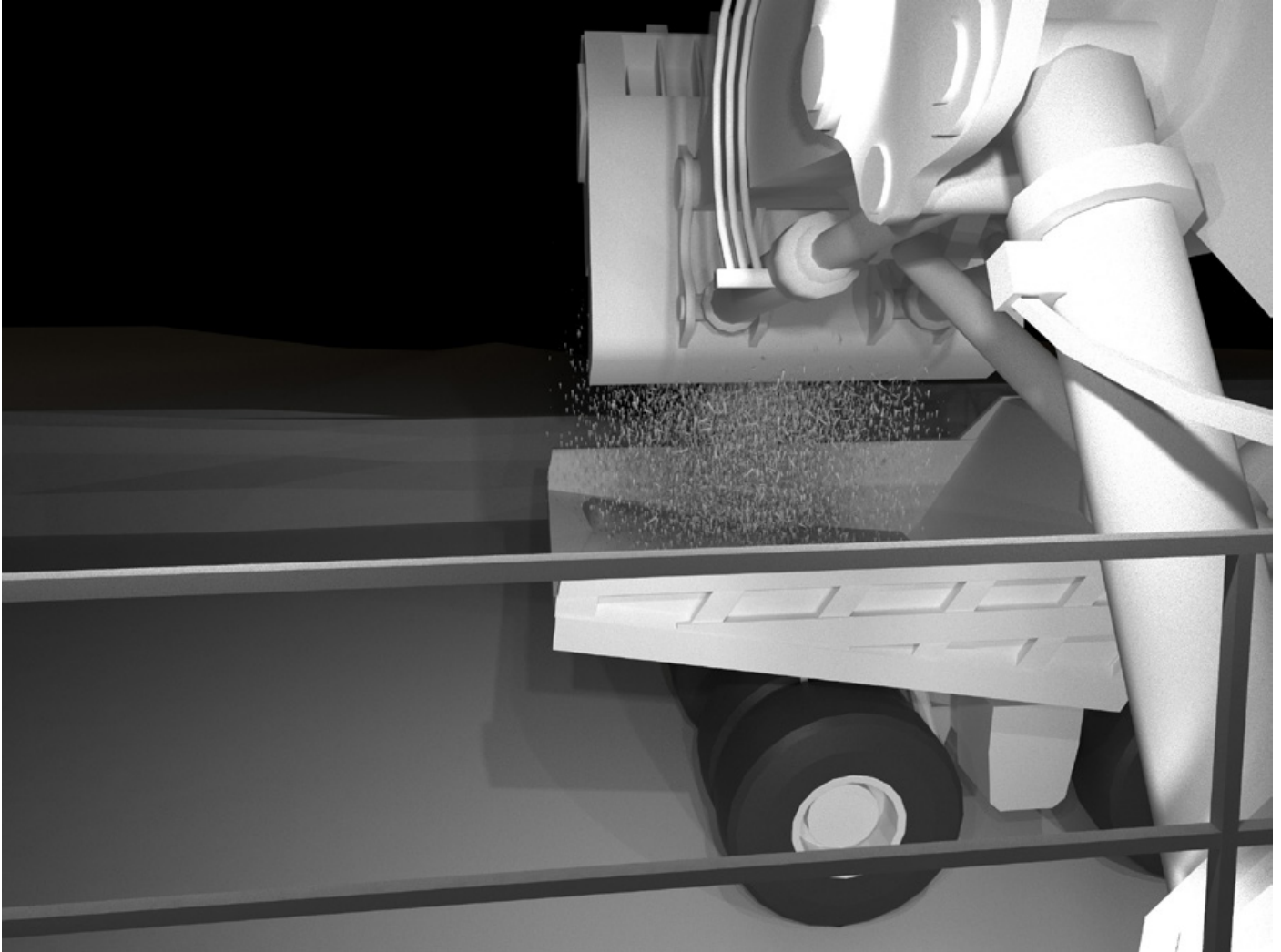
HITACHI EX8000
OPTION A



Total LLF: 0.7

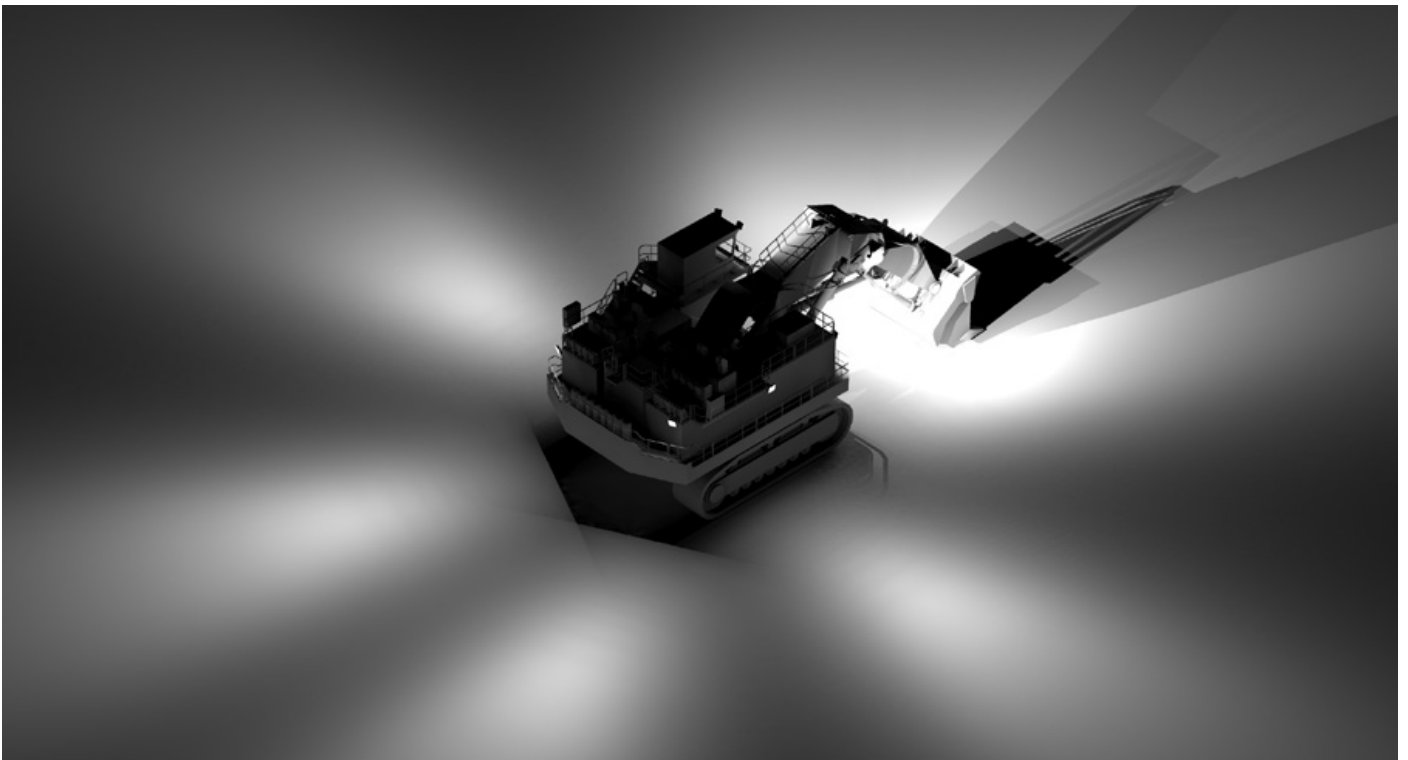
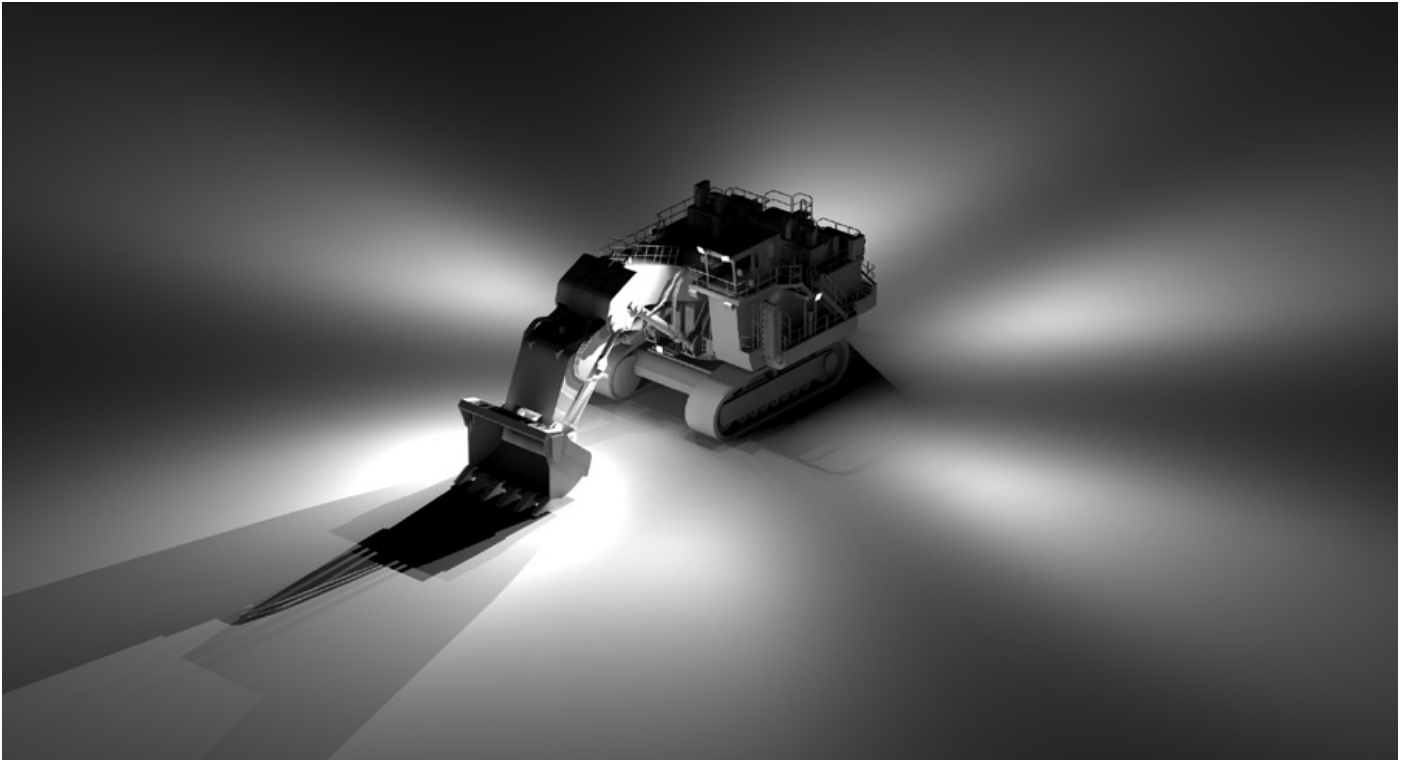
OPERATOR'S VIEW

HITACHI EX8000
OPTION A



SIMULATION

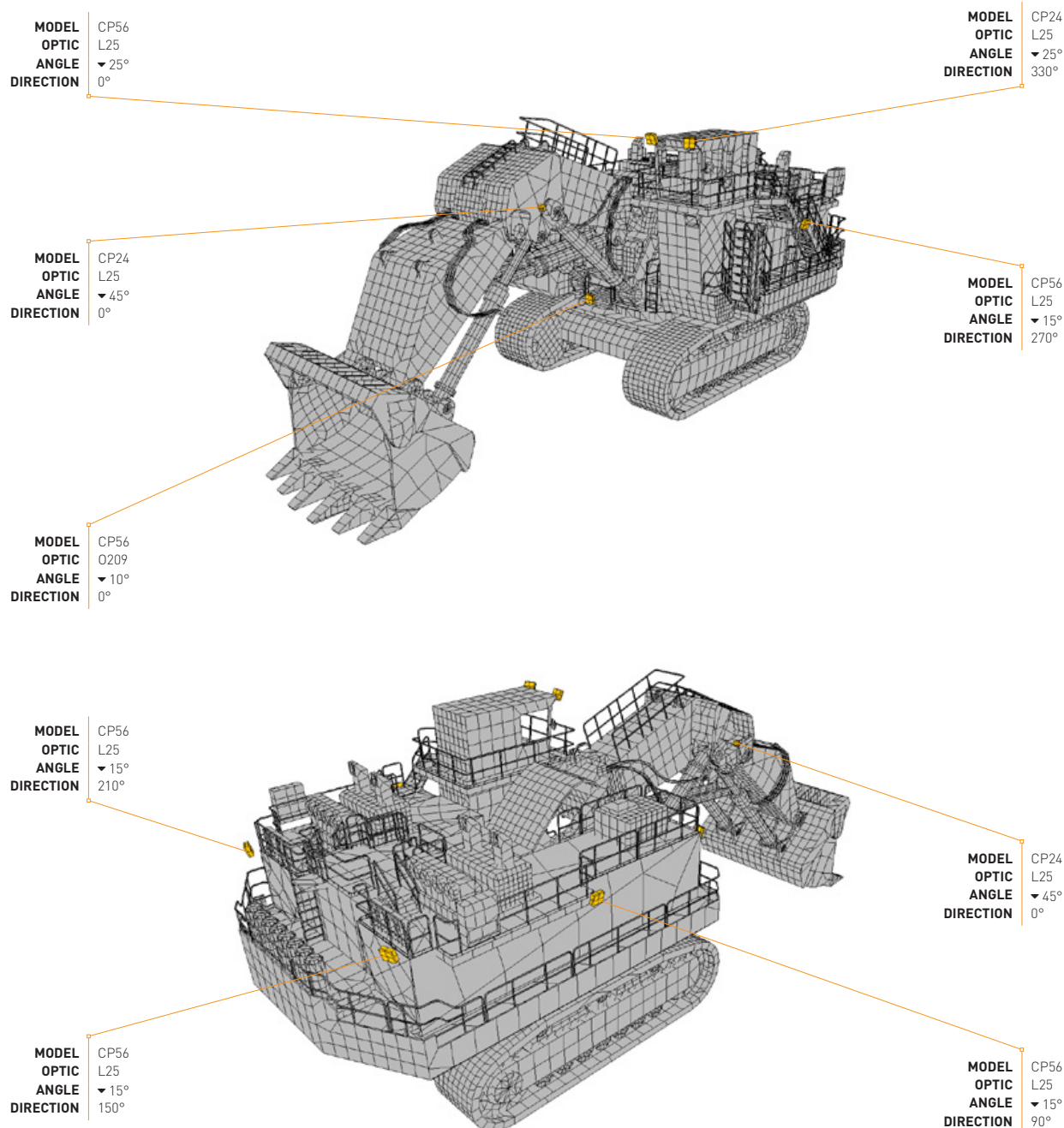
HITACHI EX8000
OPTION B



LUMINAIRE SCHEDULE

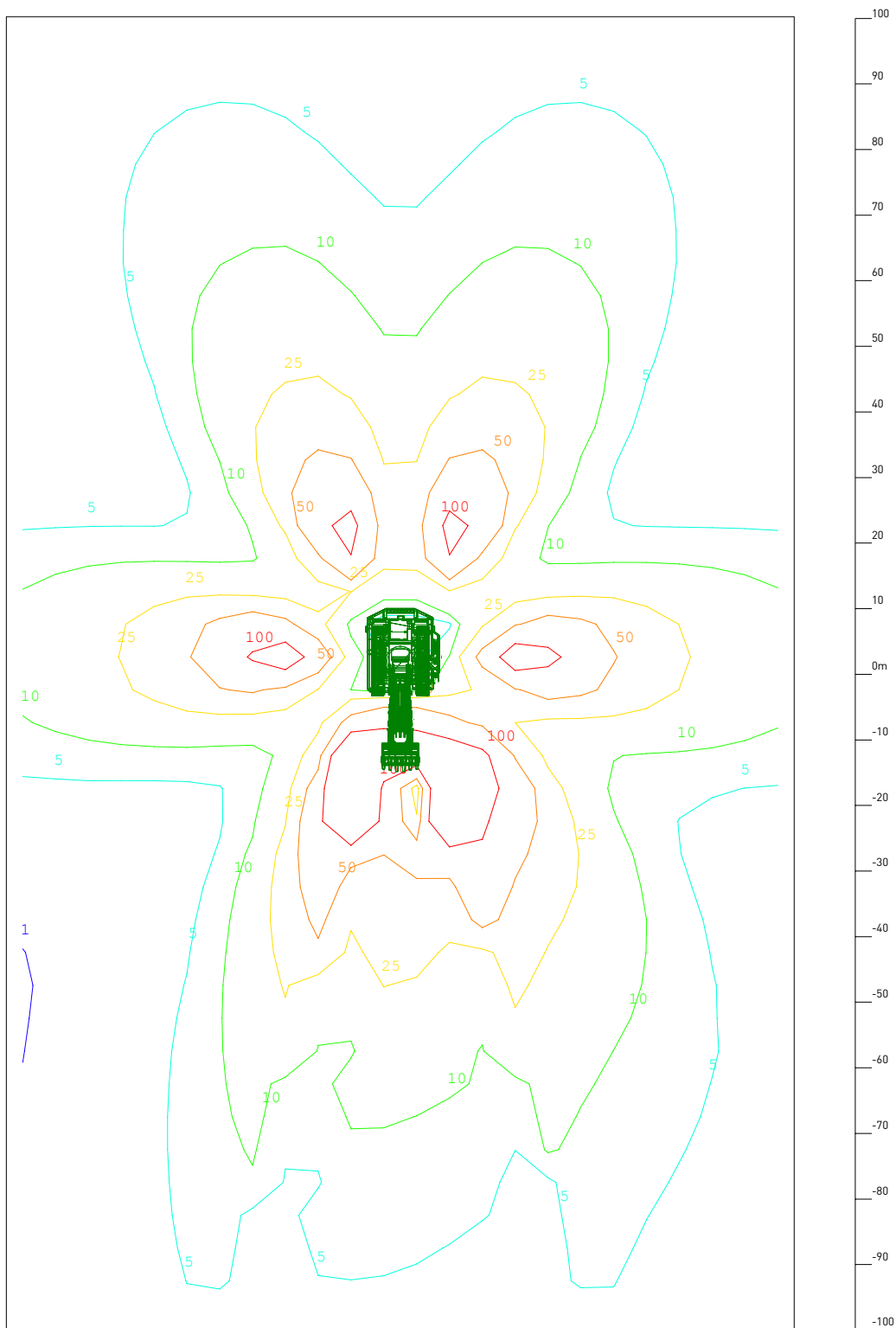
HITACHI EX8000
OPTION B

Model No.	Luminaire	Optic Type	Quantity
CP56-0209	CP56 Flood Light	0209 - 40° x 18° Beam Angle	1
CP56-L25	CP56 Flood Light	L25 - 50° Beam Angle	7
CP24-L25	CP24 Flood Light	L25 - 50° Beam Angle	2



ISOLINE VIEW

HITACHI EX8000
OPTION B



Total LLF: 0.7

OPERATOR'S VIEW

HITACHI EX8000
OPTION B

