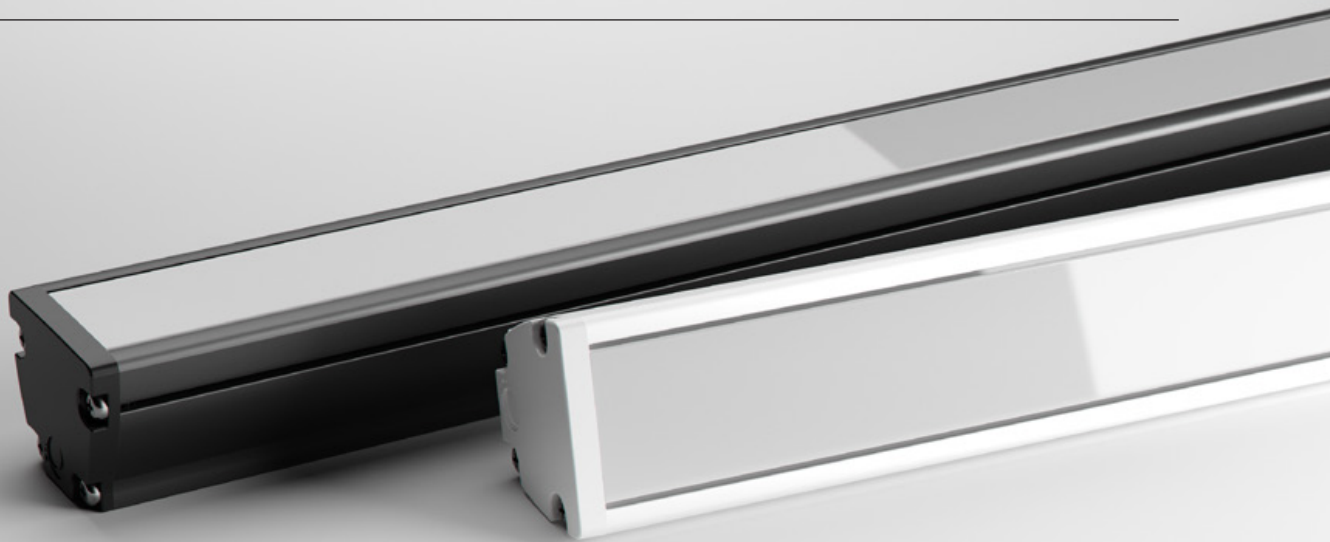


MAX MINI RGBW IP

LINEAR MEDIUM POWER LNR-MAX MINI RGBW IP





Max Mini RGBW IP is a compact and versatile RGBW colour changing luminaire designed for outdoor applications. The profile is fully encapsulated with polyurethane resin for superior outdoor longevity and appears completely uniform.

The Max Mini RGBW IP also offers great design flexibility as the luminaire can be controlled with a 4 channel DMX controller and can be automatically up-scaled and converted into full spectrum capability of RGBW light source.

POWER**LUMINOUS FLUX****40W**

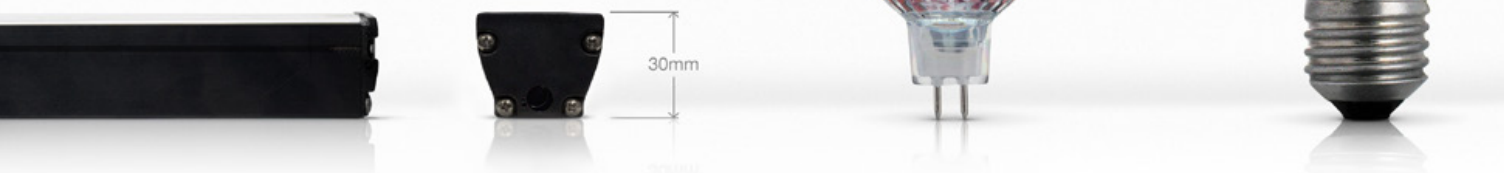
38.4W / metre

**RGBW** - Varies with colour (900 lm / metre max) ***RGBW FULL COLOUR**

* Output for full RGBW brightness

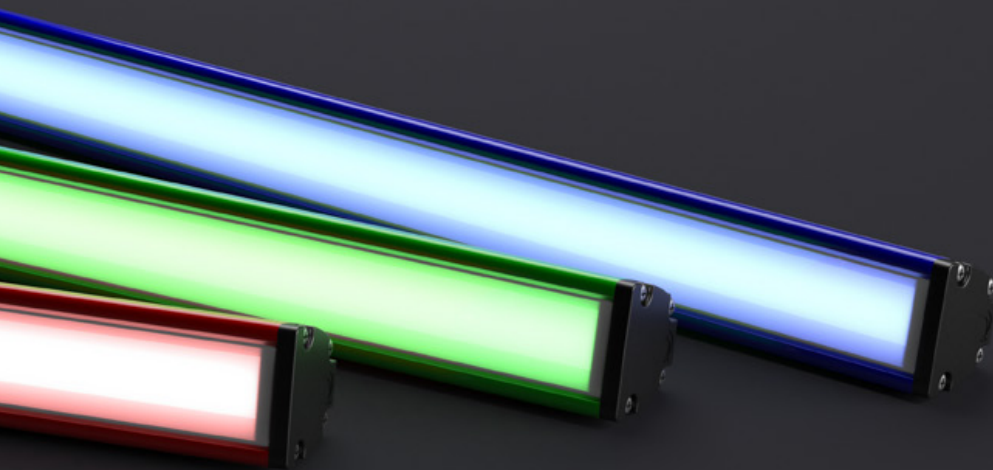
COMPACT SIZE

Reduced profile dimensions allows for ease of installation in confined spaces that could not be achieved with previous halogen counterparts. Installed in visible sight the Max Mini RGBW IP also pays respect to the interior design with minimal disruption to the aesthetics.



CUSTOMISATION AT ITS BEST

The Max Mini RGBW IP is a highly versatile and customisable luminaire. Pick from a number of linear lengths, LED colours, profile colours and mounting options. The Max Mini RGBW IP can be used as a marker luminaire or a flood light.



L70

LONG OPERATING LIFE

Coolon products use world's most reputable LED manufacturers and the latest available standard to adequately report luminaire lumen maintenance.

We strive to drive LEDs under their nominal current and use state of the art heat dissipation methods, leading to durable electronics.



VARIOUS CCT & COLOUR BINNING CONSISTENCY

Product is offered in various Colour Temperatures using tighter bins.

5
YEARS

5 YEARS WARRANTY

Coolon Luminaires are covered by a solid comprehensive manufacturer's warranty that covers a range of possible defects and performance parameters throughout the duration of the warranty period.



PROUDLY MADE IN AUSTRALIA

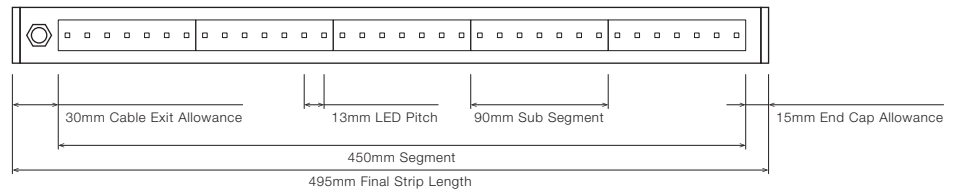
Our products are designed and manufactured in Australia. Engineered to perfection, using only the highest quality components and highly skilled labour, each luminaire is assembled and thoroughly tested to ensure that it exceeds the highest standards.

■ TECHNICAL SPECIFICATIONS

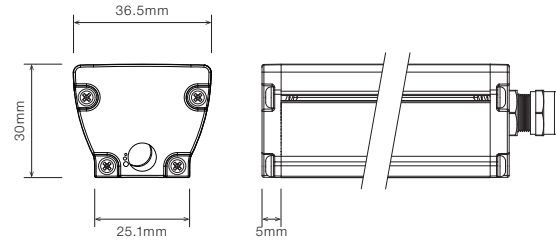
Product Code	LNR-MAX MINI RGBW IP
Description	Max Mini RGBW IP Linear Medium Power Projector
Body	Aluminium Alloy Body
Finish	Powder Coated Black (Standard), Various Colours Available
Cover	Polycarbonate Diffused for Indoor / Polyurethane for Outdoor
End Caps	Polycarbonate
Segment Length (S)	450mm
Sub-Segment Length (A)	90mm
Number of Sub-Segments	5
LED Pitch	13mm
LEDs Per Sub Segment	7
Operating Voltage	24VDC
Typical Power Consumption per Metre	38.4W per Metre
Typical Current	720mA per 450mm Segment
Colour Rendering Index (CRI)	80+
Dimming / Control	Through DRV-RDM-P4 or RDM-IP-P4 (sold separately)
Luminous Flux per Metre (lm/M)	Varies with colour - 900 lm / metre max (output for full RGBW brightness)
External Heatsink Required	No
Ambient Operating Temp	Ta -10°C to 40°C
Thermal Protection	Yes
Average Lumen Maintenance @Ta 25°C	70% @ 50,000 Hours
IP Rating	IP66 (Standard)
Max Continuous Connection Length	Please refer to installation limitations

DIMENSIONS

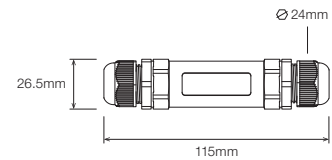
For final strip lengths please refer to the "Product Length" table.



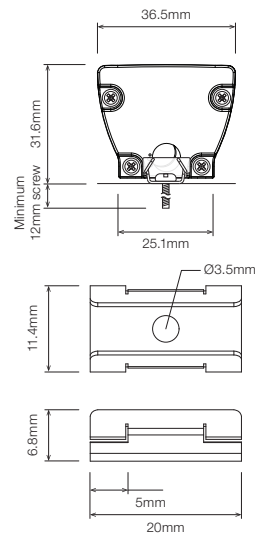
STANDARD PROFILE



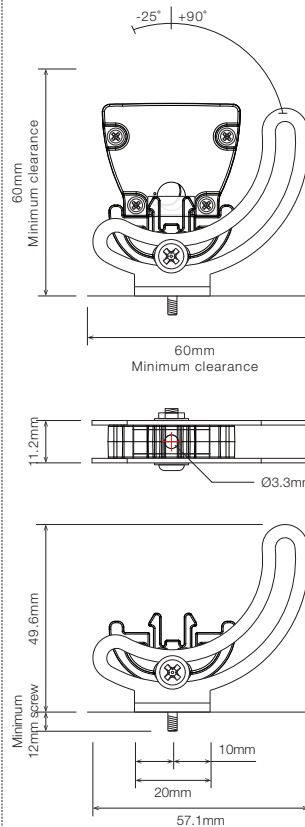
CABLE EXTENSION JOINER



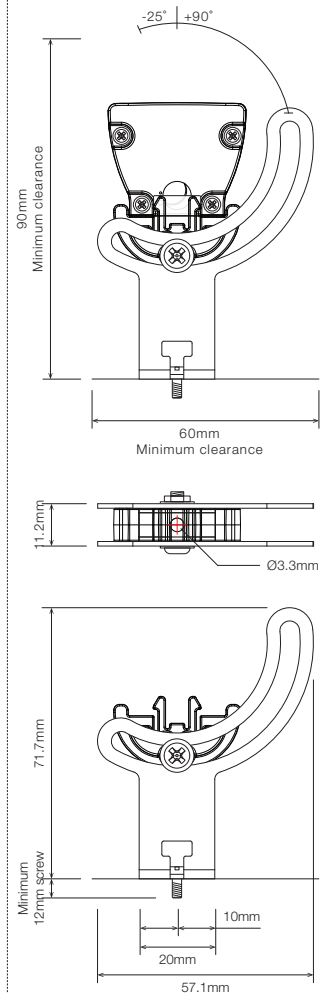
STAINLESS STEEL C-CLIP ¹



ROTATING MOUNTING BRACKET ¹



ELEVATED ROTATING MOUNTING BRACKET ^{1 2}



¹ Recommended spacing between Mounting Brackets is maximum 500mm and Mounting Clips is maximum 300mm.

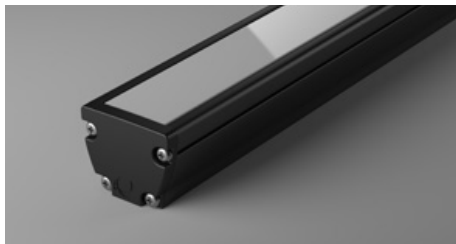
² Elevated rotating bracket is the only suitable option when wire from back is required.

■ PRODUCT LENGTH

FULL SEGMENTS	SUB SEGMENTS	EXACT STRIP LENGTH	FINAL LENGTH
S0	A1	90mm	135mm
S0	A2	180mm	225mm
S0	A3	270mm	315mm
S0	A4	360mm	405mm
S1	A0	450mm	495mm
S1	A1	540mm	585mm
S1	A2	630mm	675mm
S1	A3	720mm	765mm
S1	A4	810mm	855mm
S2	A0	900mm	945mm
S2	A1	990mm	1,035mm
S2	A2	1,080mm	1,125mm
S2	A3	1,170mm	1,215mm
S2	A4	1,260mm	1,305mm
S3	A0	1,350mm	1,395mm
S3	A1	1,440mm	1,485mm
S3	A2	1,530mm	1,575mm
S3	A3	1,620mm	1,665mm
S3	A4	1,710mm	1,755mm
S4	A0	1,800mm	1,845mm
S4	A1	1,890mm	1,935mm
S4	A2	1,980mm	2,025mm
S4	A3	2,070mm	2,115mm
S4	A4	2,160mm	2,205mm
S5	A0	2,250mm	2,295mm
S5	A1	2,340mm	2,385mm
S5	A2	2,430mm	2,475mm
S5	A3	2,520mm	2,565mm
S5	A4	2,610mm	2,655mm
S6	A0	2,700mm	2,745mm
S6	A1	2,790mm	2,835mm
S6	A2	2,880mm	2,925mm

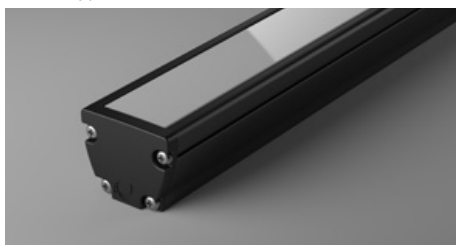
- DIFFUSER

PT • Polyurethane Translucent - Uniform Glow

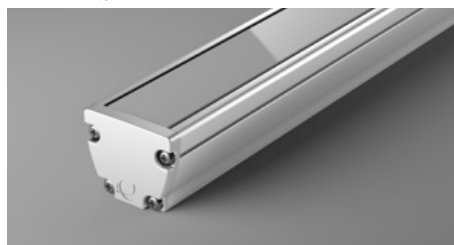


- PROFILE COLOUR

BLK • Black



WHT • White



CST • Custom Colour ¹



¹ Custom colours available on request

■ WIRING CONFIGURATION

CONNECTOR TYPE

OC6MO
Outdoor Connector 6 pin Male Only

DRAWING



MALE



FEMALE

- Typical wiring length 1,000mm with cable's outer diameter 5.8mm
- Supplied with mating connector and 3,000mm cable
- Please consult Coolon for details on extension cables between LED fittings, drivers and PSUs.

WIRING COLOUR CODE	
Orange / Yellow	+ VDC
Red	- RED
Green	- GREEN
Blue	- BLUE
White	- WHITE

■ WIRING POSITION

WB - Wire from back



Ideal for fittings installed back-to-back or limited spaces.



WS - Wire from Side



Ideal for fittings installed individually or vertically.



■ IP RATING

IP66

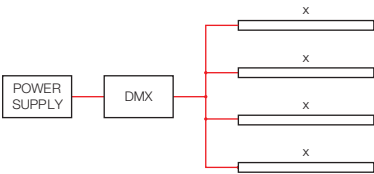
Fully protected against dust.
Protected against wave-like
water jets from all directions.

■ INSTALLATION LIMITS

SCENARIO 1



SCENARIO 2



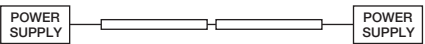
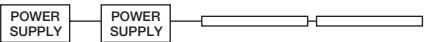
MAX. CONTINUOUS CONNECTION LENGTH (X) CONNECTOR TYPE

3,000 mm With standard outdoor 6 pin connectors (OC6MO)

■ Please consult Coolon for details on extension cable between LED fittings, drivers and power supplies.

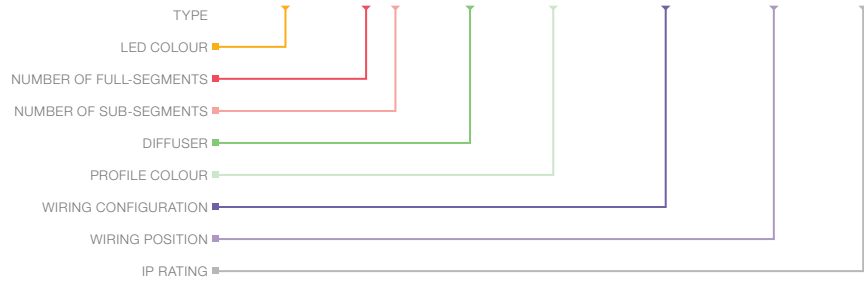
⚠ WARNING

Avoid connecting multiple power supplies into a single circuit, unless they are specifically designed to do so.



ORDERING EXAMPLE

LNR - MAX MINI RGBW IP - WW - S2A0 - PT - BLK - OC6MO - WB - IP66



LED COLOUR

WW	RGB + Warm White
CW	RGB + Cool White

PRODUCT LENGTH

FULL SEGMENTS	SUB SEGMENTS
S1	A0
S2	A1
S3	A2
S4	A3
S5	A4
S6	

DIFFUSER

PT	Polyurethane Translucent - Uniform Glow
----	---

PROFILE COLOUR

BLK	Black (Standard)
WHT	White
CST	Custom Colour ¹

WIRING CONFIGURATION

OC6MO	Outdoor Connector 6 pin Male Only
-------	-----------------------------------

WIRING POSITION


WB	Wire from Back
WS	Wire from Side

IP RATING


IP66	Outdoor Use
------	-------------


¹ Custom colours available on request

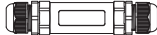
■ ACCESSORIES

	PRODUCT CODE	DESCRIPTION
	MC-CCLIP	Stainless Steel C-Clip
	MBR-PMAX-BLK	Rotating Mounting Bracket for Max Mini - Black
	MBR-PMAX-WHT	Rotating Mounting Bracket for Max Mini - White
	MBR-PMAX-E-BLK	Elevated Rotating Mounting Bracket for Max Mini - Black
	MBR-PMAX-E-WHT	Elevated Rotating Mounting Bracket for Max Mini - White

¹ Recommended spacing between Mounting Brackets is maximum 500mm and Mounting Clips is maximum 300mm.

	PRODUCT CODE	DESCRIPTION
	DRV-RDM-P4	DMX/RDM 4 Channel LED Driver
	DRV-RDM-IP-P4	Outdoor DMX/RDM 4 Channel LED Driver
	DRV-RDM-IPQC-P4	Outdoor DMX/RDM 4 Channel LED Driver + Quick Connect
	DRV-RDM-IPQC05-P4	Outdoor DMX/RDM 4 Channel LED Driver + Quick Connect

	PRODUCT CODE	DESCRIPTION
	PWR-HLG-60H-24AU	Mean Well Power Supply HLG 60W 24V IP67
	PWR-HLG-150H-24AU	Mean Well Power Supply HLG 150W 24V IP67
	PWR-HLG-240H-24AU	Mean Well Power Supply HLG 240W 24V IP67

	PRODUCT CODE	DESCRIPTION
	CBLEXT-LNR-OC6F-IP65-1M	1m Length, 6 Core Leader Cable with outdoor female connector and loose wires
	CBLEXT-LNR-OC6F-IP65-3M	3m Length, 6 Core Leader Cable with outdoor female connector and loose wires
	CBLEXT-LNR-OC6F-IP65-5M	5m Length, 6 Core Leader Cable with outdoor connector and loose wires
	CBLEXT-LNR-OC6F-IP65-10M	10m Length, 6 Core Leader Cable with outdoor connector and loose wires