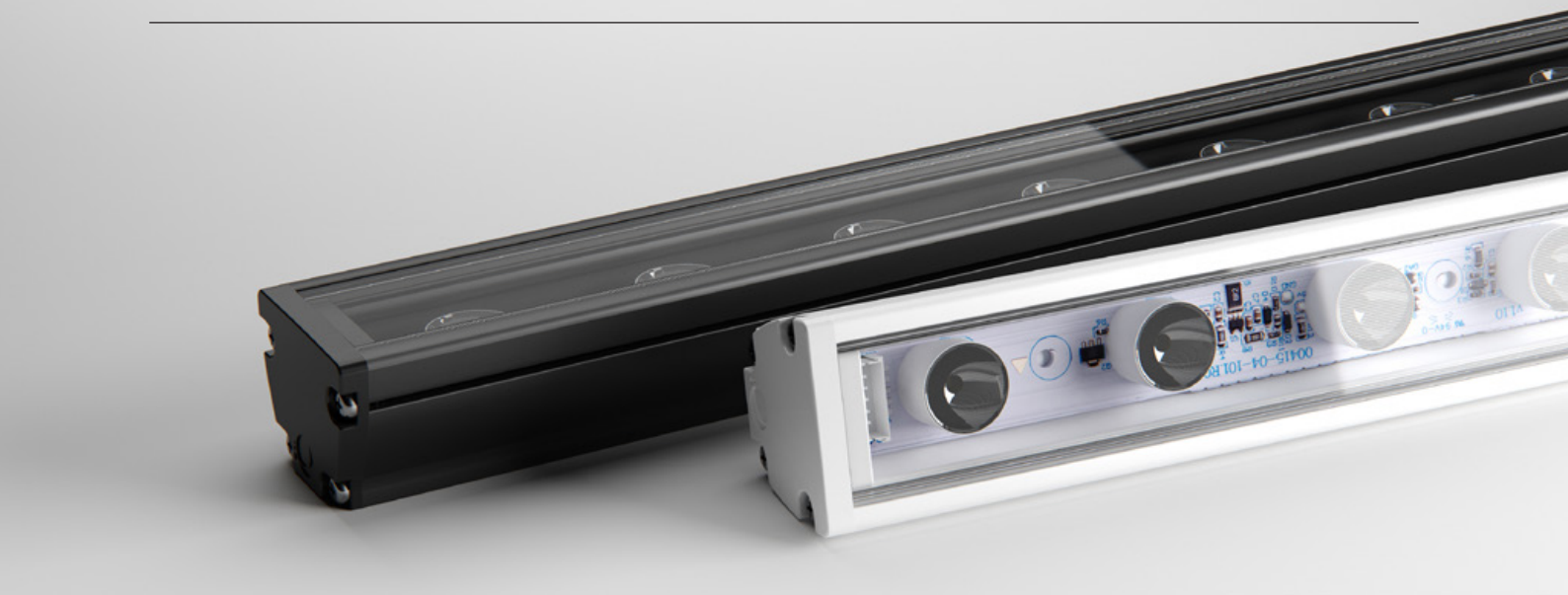


MAX MINI IP

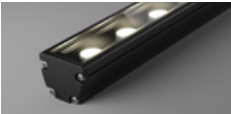
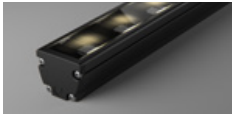
LINEAR MEDIUM POWER LNR-MAX MINI IP





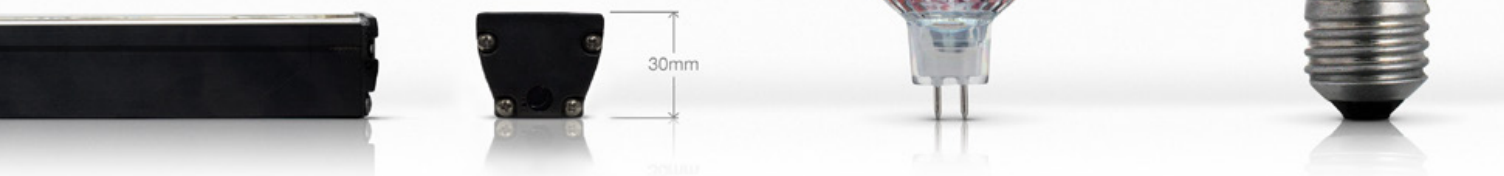
Max Mini IP is a medium-power outdoor luminaire with precision optics - available in a range of colour temperatures. Unique encapsulation methods and a robust form factor provide IP66/IK08 for unbeatable durability and resistance against exterior conditions.

Optic selection and the assistance of a range of brackets ensure easy installation and accurate aiming, allowing you to execute your design with precision.

POWER	LUMINOUS FLUX	
33W 33W / metre		
	PC	ML
COLOUR TEMPERATURE		
<div><div></div><div></div><div></div><div></div><div></div></div> <div>2700K3000K3200K4000K5000K</div>		

COMPACT SIZE

Reduced profile dimensions allows for ease of installation in confined spaces that could not be achieved with previous halogen counterparts. Installed in visible sight the Max Mini IP also pays respect to the interior design with minimal disruption to the aesthetics.



ELEGANT ENCAPSULATION

Max Mini IP utilises Coolon's encapsulation technology and signature build quality to deliver an outdoor luminaire that's uniquely resilient. IP66, IK08, shock and abrasion resistance and thermal protection just add to the appeal of this versatile all-star.

L90

LONG OPERATING LIFE

Coolon products use world's most reputable LED manufacturers and the latest available standard to adequately report luminaire lumen maintenance.

We strive to drive LEDs under their nominal current and use state of the art heat dissipation methods, leading to durable electronics.



VARIOUS CCT & COLOUR BINNING CONSISTENCY

Product is offered in various Colour Temperatures using tighter bins.

5 YEARS

5 YEARS WARRANTY

Coolon Luminaires are covered by a solid comprehensive manufacturer's warranty that covers a range of possible defects and performance parameters throughout the duration of the warranty period.



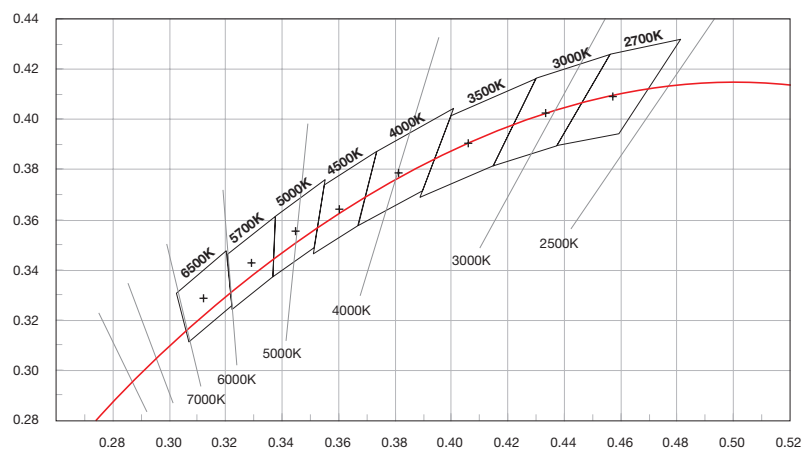
PROUDLY MADE IN AUSTRALIA

Our products are designed and manufactured in Australia. Engineered to perfection, using only the highest quality components and highly skilled labour, each luminaire is assembled and thoroughly tested to ensure that it exceeds the highest standards.

TECHNICAL SPECIFICATIONS

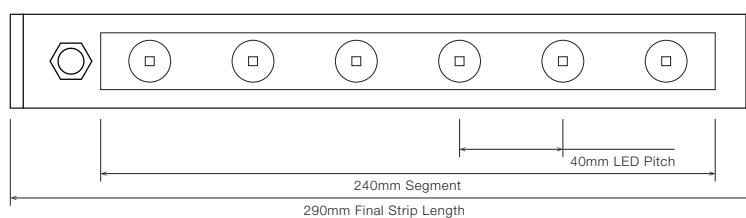
Product Code	LNR-MAX MINI IP
Description	Max Mini IP Linear Medium Power Projector
Body	Aluminium Alloy Body
Finish	Powder Coated Black (Standard), Various Colours Available
Cover	Polycarbonate
End Caps	Polycarbonate
Segment Length (S)	240mm
Segment Width	22mm
LED Pitch	40mm
LEDs Per Segment	6
Operating Voltage	24VDC
Typical Power Consumption per Segment	7.92W per 240mm Segment
Typical Power Consumption per metre	33.0W per metre
Typical Current	330mA per 240mm Segment
Colour Rendering Index (CRI)	90+
Dimmable	Through CTR-A2PWM 0-10V, CTR-DIMMERLOGIC, CTR-DALILOGIC or CTR-DALILOGIC-IP (sold separately)
Luminous Flux per Metre (lm/m)	1600lm/metre
External Heatsink Required	No
Ambient Operating Temp	Ta -10°C to 50°C
Thermal Operating	Yes (Active)
Reported Lumen Maintenance TM21-11 (@ Ts = 85°C, If = 500mA)	L70 (18K) > 109,000 hours L90 (18K) > 103,000 hours Max Mini max. operating values (@ Ts = 50°C, If = 325mA)
IP Rating	IP66 (Standard)
Max Continuous Connection Length	Please refer to installation limitations

COLOUR BINNING

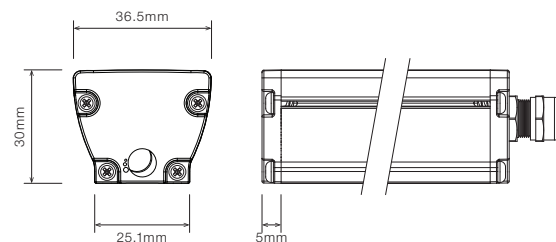


DIMENSIONS

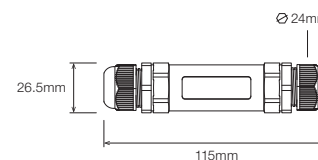
For final strip lengths please refer to the "Product Length" table.



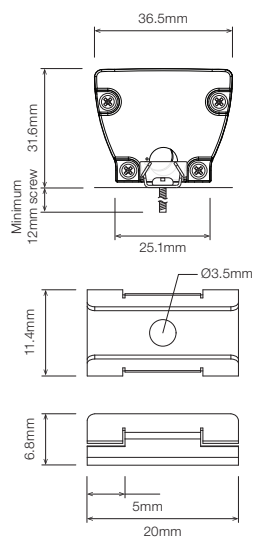
STANDARD PROFILE



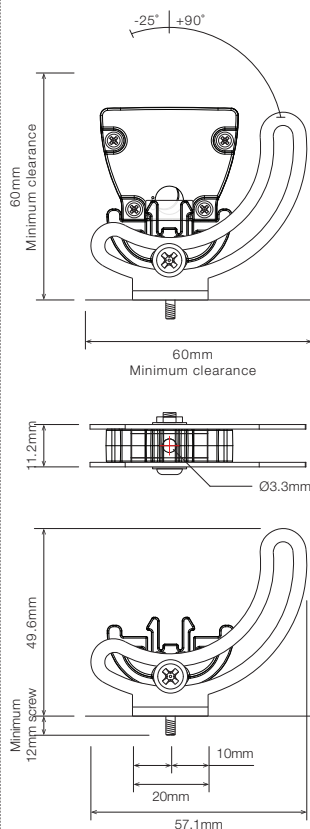
CABLE EXTENSION JOINER



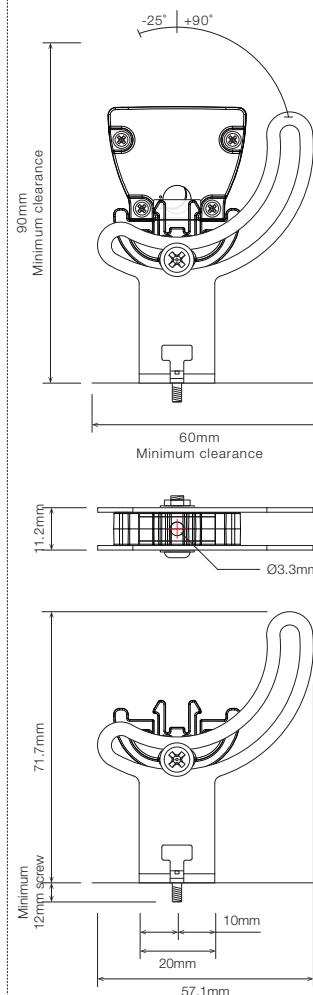
STAINLESS STEEL C-CLIP ¹



ROTATING MOUNTING BRACKET ¹



ELEVATED ROTATING MOUNTING BRACKET ^{1 2}




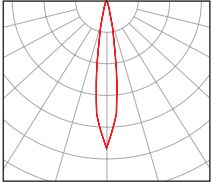

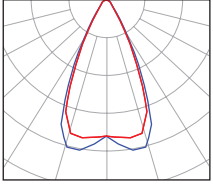

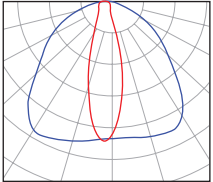

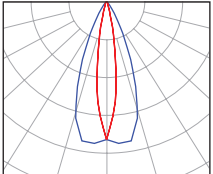
¹ Recommended spacing between Mounting Brackets is maximum 500mm and Mounting Clips is maximum 300mm.

² Elevated rotating bracket is the only suitable option when wire from back is required.

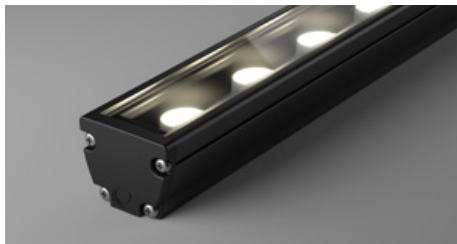
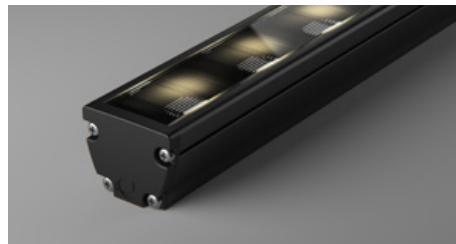
■ PRODUCT LENGTH

FULL SEGMENTS	EXACT STRIP LENGTH	FINAL LENGTH
S1	240mm	290mm
S2	480mm	530mm
S3	720mm	770mm
S4	960mm	1,010mm
S5	1,200mm	1,250mm
S6	1,440mm	1,490mm
S7	1,680mm	1,730mm
S8	1,920mm	1,970mm
S9	2,160mm	2,210mm
S10	2,400mm	2,450mm
S11	2,640mm	2,690mm
S12	2,880mm	2,930mm

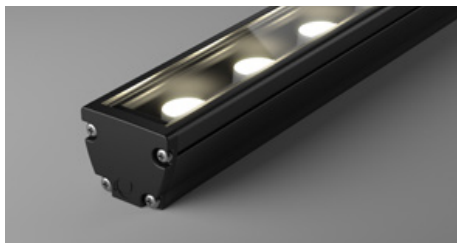
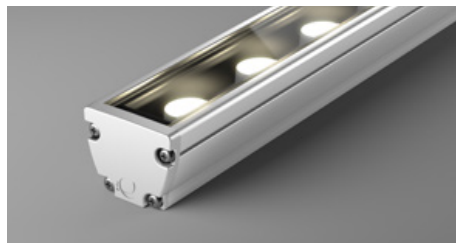
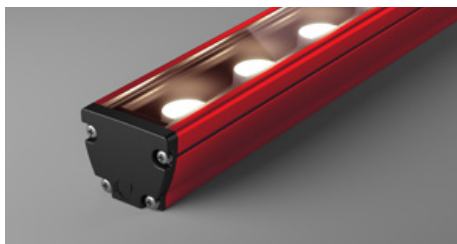
■ POLAR DISTRIBUTION

OPTIC	BEAM ANGLE	POLAR DISTRIBUTION
L07 	14° Beam	
L25 	50° Beam	
F5010 	Flare 100° x 20° Beam	
O209 	Oval 40° x 18° Beam	

■ DIFFUSER





PC • Polyurethane Clear**ML** • Micro Louvre

■ PROFILE COLOUR

BLK • Black**WHT** • White**CST** • Custom Colour ¹

¹ Custom colours available on request

WIRING CONFIGURATION



CONNECTOR TYPE	DRAWING	MALE	FEMALE
OC2.2MO Outdoor Connector 2.2pin Male Only			
SMPLC.1 Sample Type Connector 2.5mm			

- Typical wiring length 1,000mm.
- Please consult Coolon for details on extension cable between LED fittings, drivers and power supplies.

WIRING COLOUR CODE	
Red	+ VDC
Black	GND
White	Dimming



WIRING POSITION

WB - Wire from back



Ideal for fittings installed end-to-end or limited spaces.

WS - Wire from Side



Ideal for fittings installed individually or vertically.

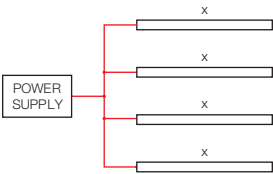
IP RATING

IP66

Fully protected against dust.
Protected against wave-like
water jets from all directions.

■ INSTALLATION LIMITS

SCENARIO 1



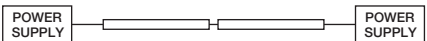
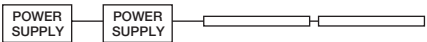
MAX. CONTINUOUS CONNECTION LENGTH (X) CONNECTOR TYPE

2,930 mm With standard 2+1 bare wires (WR2.10S)

- Please consult Coolon for details on extension cable between LED fittings, drivers and power supplies.

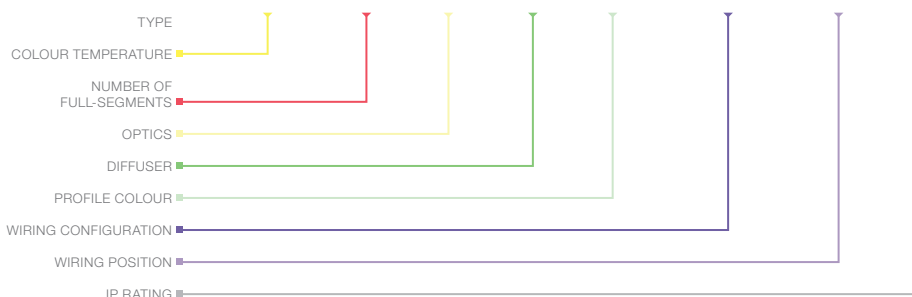
 **WARNING**

Avoid connecting multiple power supplies into a single circuit, unless they are specifically designed to do so.



ORDERING EXAMPLE

LNR - MAX MINI IP - 3.5KCRI - S2 - O209 - PC - BLK - OC2.2MO - WB - IP66



■ COLOUR TEMPERATURE PAGE 04

2.7KCRI	2700K CRI 90
3.0KCRI	3000K CRI 90
3.5KCRI	3500K CRI 90
4.0KCRI	4000K CRI 90
5.0KCRI	5000K CRI 90

■ PRODUCT LENGTH PAGE 06

S1	290mm
S2	530mm
S3	770mm
S4	1010mm
S5	1,250mm
S6	1,490mm
S7	1,730mm
S8	1,970mm
S9	2,210mm
S10	2,450mm
S11	2,690mm
S12	2,930mm

■ OPTICS PAGE 06

L07	14° Beam
L25	50° Beam
F5010	Flare 100° x 20° Beam
O209	Oval 40° x 18° Beam

■ DIFFUSER PAGE 07

PC	Polyurethane Clear
ML	Micro Louvre

■ PROFILE COLOUR PAGE 07

BLK	Black (Standard)
WHT	White
CST	Custom Colour ¹

■ WIRING CONFIGURATION PAGE 08

OC2.2MO	Outdoor Connector 2.2pin Male Only
SMPLC.1	Sample Type Connector 2.5mm

■ WIRING POSITION PAGE 08


WB	Wire from Back
WS	Wire from Side

■ IP RATING PAGE 08


IP66	Outdoor Use
------	-------------


¹ Custom colours available on request

■ ACCESSORIES

	PRODUCT CODE	DESCRIPTION
	MC-CCLIP	Stainless Steel C-Clip
	MBR-PMAX-BLK	Rotating Mounting Bracket for Max Mini - Black
	MBR-PMAX-WHT	Rotating Mounting Bracket for Max Mini - White
	MBR-PMAX-E-BLK	Elevated Rotating Mounting Bracket for Max Mini - Black
	MBR-PMAX-E-WHT	Elevated Rotating Mounting Bracket for Max Mini - White

¹ Recommended spacing between Mounting Brackets is maximum 500mm and Mounting Clips is maximum 300mm.

	PRODUCT CODE	DESCRIPTION
	CTR-A2PWM 0-10V	Analogue to PWM converter for 0-10V dimming signal
	CTR-DIMMERLOGIC	Coolon Universal Wall Dimmer with 0-10V and PWM Logic Output
	CTR-DALI-LOGIC	Indoor DALI Point 1 channel Driver with PWM Logic Output
	CTR-DALILOGIC-IP	Outdoor DALI Point 1 channel Driver with PWM Logic Output

	PRODUCT CODE	DESCRIPTION
	PWR-HLG-60H-24AU	Mean Well Power Supply HLG 60W 24V IP67
	PWR-HLG-150H-24AU	Mean Well Power Supply HLG 150W 24V IP67
	PWR-HLG-240H-24AU	Mean Well Power Supply HLG 240W 24V IP67
	PWR-HLG-320H-24AU	Mean Well Power Supply HLG 320W 24V IP67

	PRODUCT CODE	DESCRIPTION
	CBLEXT-LNR-WR2.1-IP65-3M	3m Length, 3 Core RBW 16AWG Cable Extension with outdoor joiner
	CBLEXT-LNR-WR2.1-IP65-5M	5m Length, 3 Core RBW 16AWG Cable Extension with outdoor joiner
	CBLEXT-LNR-WR2.1-IP65-10M	10m Length, 3 Core RBW 16AWG Cable Extension with outdoor joiner
	CBLEXT-LNR-WR2.1-IP65-20M	20m Length, 3 Core RBW 16AWG Cable Extension with outdoor joiner