

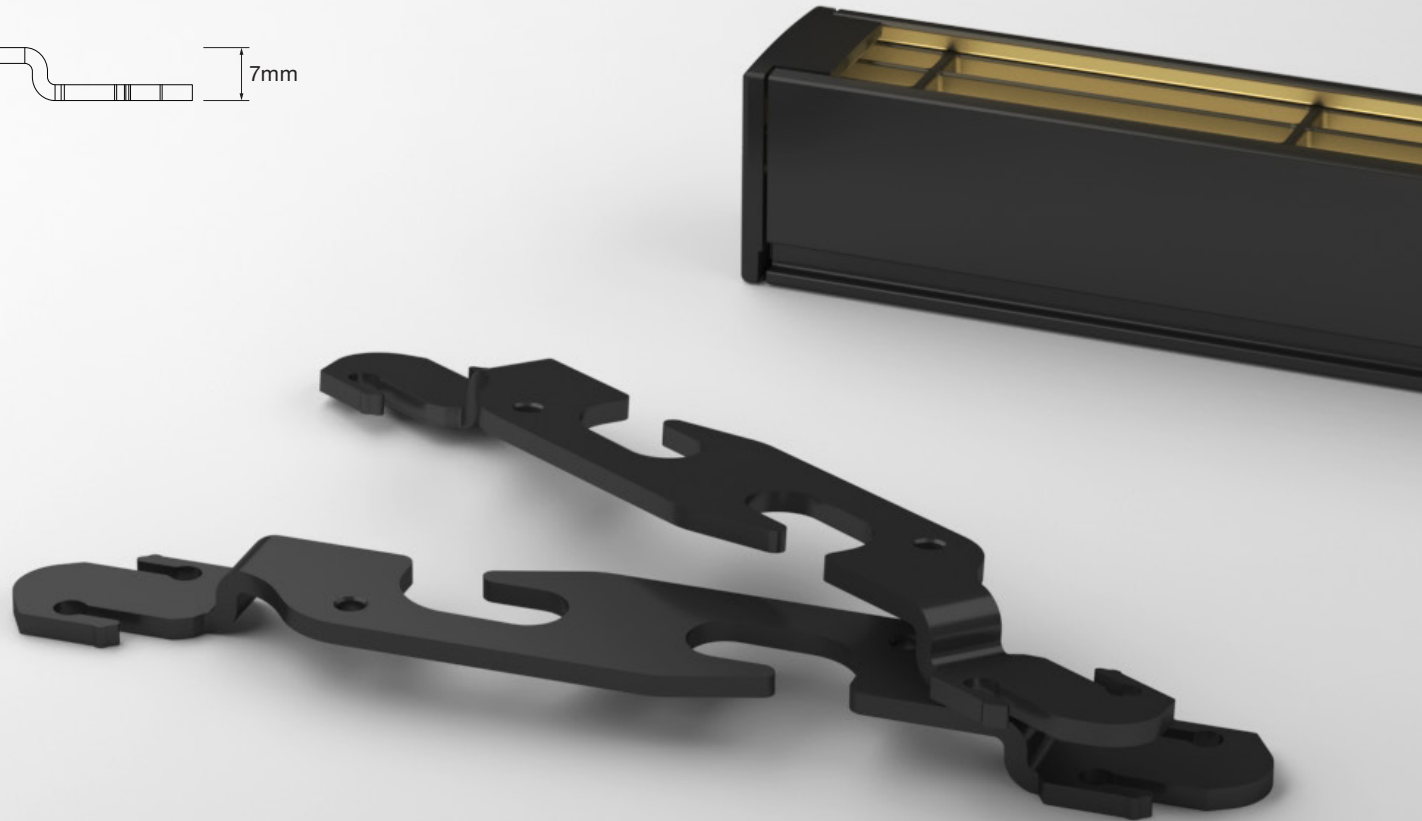
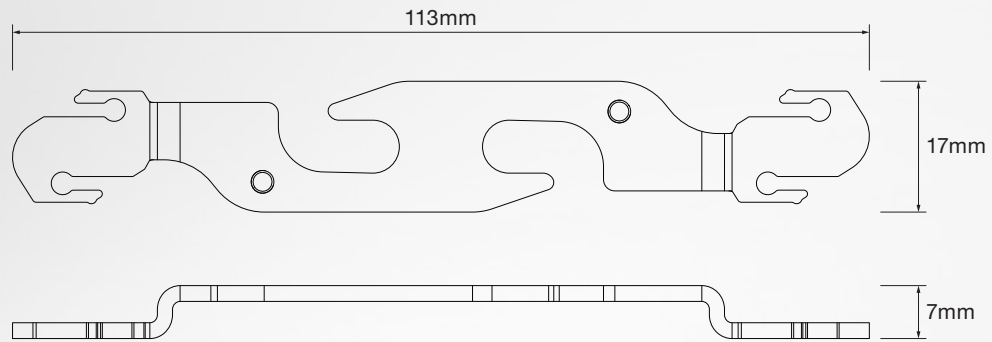


# FORMA LOCKING CONNECTOR INSTALLATION INSTRUCTIONS



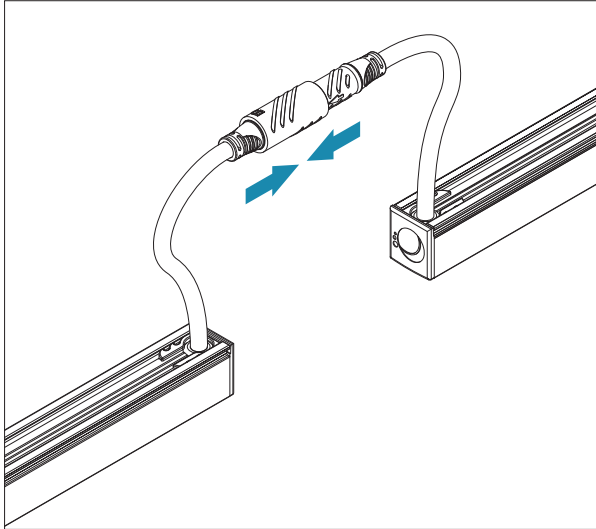
▪ DIMENSIONS

Made from Stainless Steel Grade 303



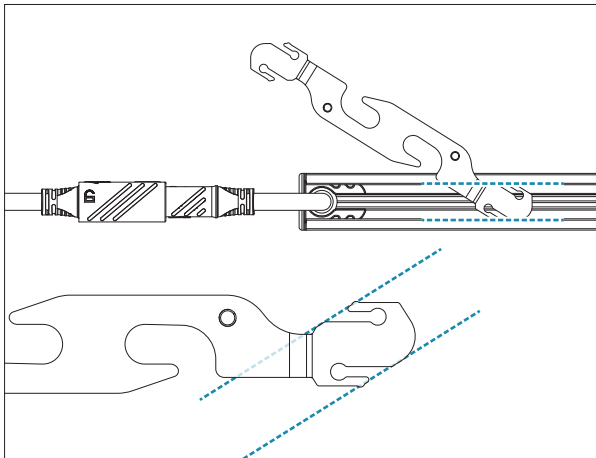
### STEP 1

Ensure that the locking connectors are connected tightly.



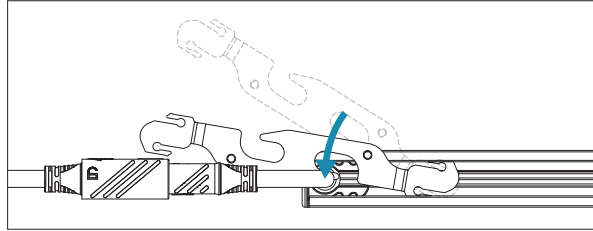
### STEP 2

Align the two flat edges of the locking clip to the back profile of the fitting. Tilt slightly to fit under the lip of the profile.



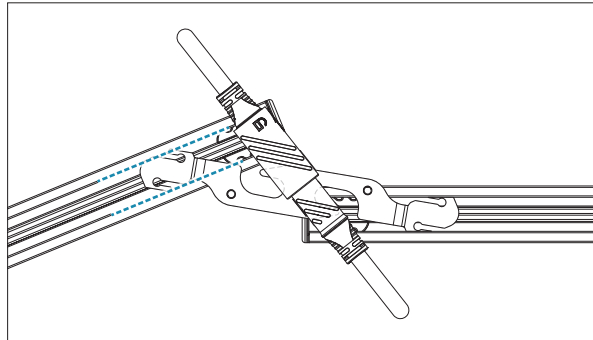
### STEP 3

Slide the clip along the profile ensuring that the cable aligns with the notch on the clip.



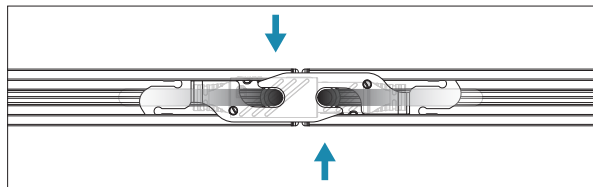
### STEP 4

Align the other flat edges of the locking clip to the other fitting. Ensure that the cables are on the same side as the notches.



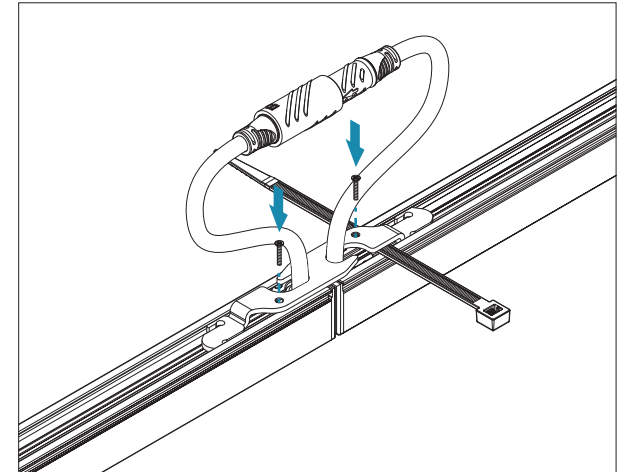
### STEP 5

Slide the locking clip so that the cables line up with the notches. Squeeze the fitting together ensuring that no cables are pinched in the process.



### STEP 6

Use the locking screws to fix the bracket in place. The two fittings will now be locked parallel to one another. You can now thread a cable tie (supplied) under the locking clip.



### STEP 7

Loop the cable tie around the cable and tighten to fasten into place. Repeat on the other side and trim off the excess.

