

ELECTRO IP

LINEAR MEDIUM POWER LNR-ELECTRO IP





A robust outdoor luminaire that is perfect for direct view applications. At IP66/IK08, Electro IP has unbeatable durability and resistance to exterior conditions, while the minimalist design allows for discreet installation and integration into architectural elements.

POWER**LUMINOUS FLUX****22W**

22W / metre

**PT** • 1,600 lm / metre**40W**

40W / metre

**PT** • 2,000 lm / metre**COLOUR TEMPERATURE**

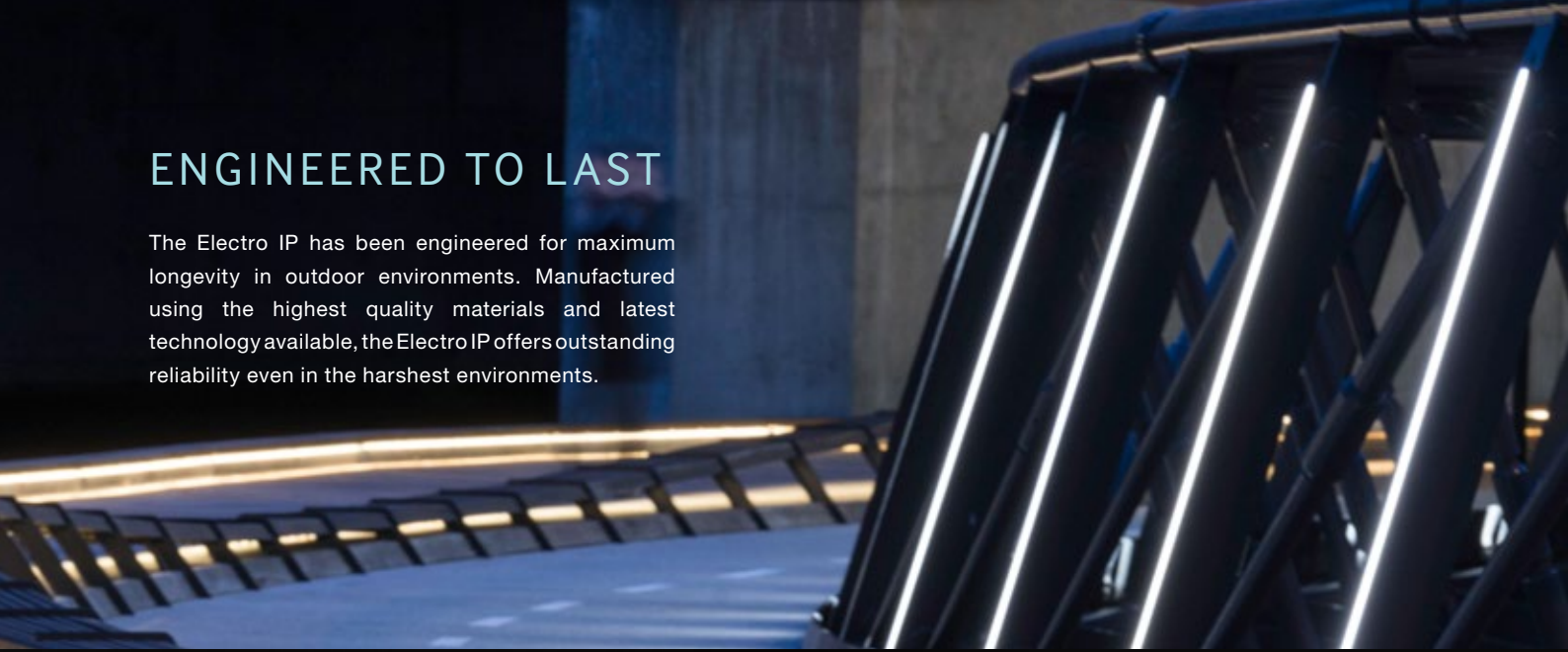
2700K

3000K

4000K

ENGINEERED TO LAST

The Electro IP has been engineered for maximum longevity in outdoor environments. Manufactured using the highest quality materials and latest technology available, the Electro IP offers outstanding reliability even in the harshest environments.



UNIFORM GLOW

The Electro IP is offered in various configurations as well as “Uniform Glow”, a completely uniformly illuminated diffuser with no visible scalloping on the diffuser or the illuminated surface.



LONG OPERATING LIFE

Coolon products use world's most reputable LED manufacturers and the latest available standard to adequately report luminaire lumen maintenance.

We strive to drive LEDs under their nominal current and use state of the art heat dissipation methods, leading to durable electronics.



VARIOUS CCT & COLOUR BINNING CONSISTENCY

Product is offered in various Colour Temperatures using tighter bins.



5 YEARS WARRANTY

Coolon Luminaires are covered by a solid comprehensible manufacturer's warranty that covers a range of possible defects and performance parameters throughout the duration of the warranty period.



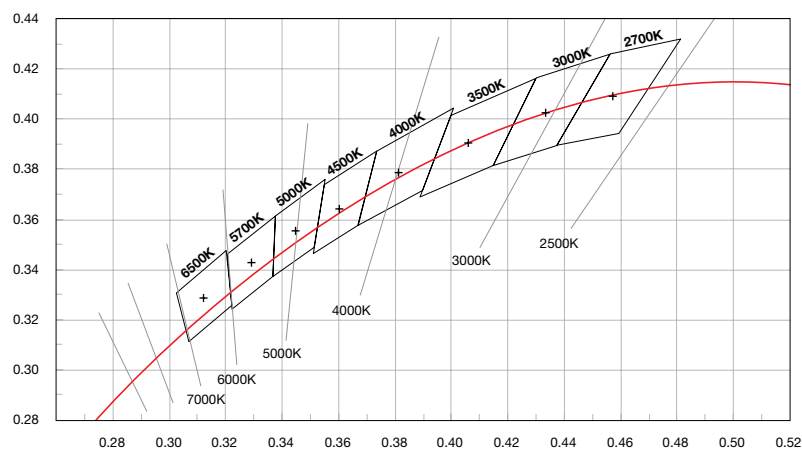
PROUDLY MADE IN AUSTRALIA

Our products are designed and manufactured in Australia. Engineered to perfection, using only the highest quality components and highly skilled labour, each luminaire is assembled and thoroughly tested to ensure that it exceeds the highest standards.

TECHNICAL SPECIFICATIONS

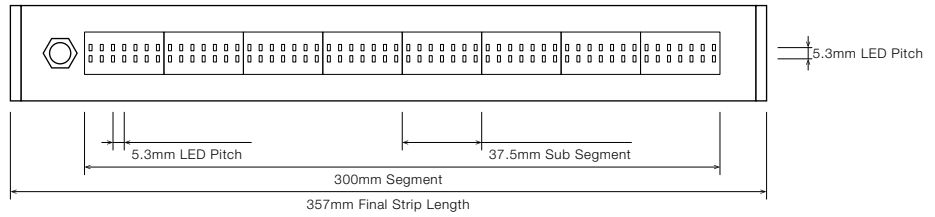
| | 22W VERSION | 40W VERSION |
|--|--|--------------------------|
| Product Code | LNR-ELECTRO IP | |
| Description | Electro IP Linear Medium Power | |
| Body | Aluminium Alloy Body | |
| Finish | Brushed Natural Aluminium (Standard), Various Colours Available | |
| Cover | Polycarbonate (PC) Diffused | |
| End Caps | Polycarbonate (PC) | |
| Segment Length (S) | 300mm | |
| Sub-Segment Length (A) | 37.5mm | |
| Number of Sub-Segments | 8 | |
| Segment Width | 26.5mm | |
| LED Pitch | 5.3mm (W) x 5.3mm (H) | |
| LEDs Per Segment | 112 | |
| LEDs Per Sub Segment | 14 | |
| Operating Voltage | 42VDC | |
| Typical Power Consumption per Segment | 6.72W per 300mm Segment | 12.00W per 300mm Segment |
| Typical Power Consumption per Metre | 22W per Metre | 40W per Metre |
| Typical Current | 100mA per 300mm Segment | 280mA per 300mm Segment |
| Colour Rendering Index (CRI) | 80+ | |
| Dimmable | Through DRV-DALIPOINT-1X5A, DRV-DALIPOINT-1X10A-IP or DRV-DIMMERPOINT-1X10A (sold separately) | |
| Luminous Flux per Metre (lm/M) | 1,600lm / Metre | 2,000lm / Metre |
| External Heatsink Required | No | |
| Ambient Operating Temp | Ta -20°C to 50°C | |
| Thermal Operating | Yes (Active) | |
| Reported Lumen Maintenance TM21-11 (@ Ts = 55°C, If = 65mA) | L70 (12K) > 72,000 hours L90 (12K) > 59,000 hours Electro max. operating values (@ Ts = 40°C, If = 35mA) | |
| IP Rating | IP66 (Standard) | |
| IK Rating | IK08 (Standard) | |
| Max Continuous Connection Length | Please refer to installation limitations | |

COLOUR BINNING

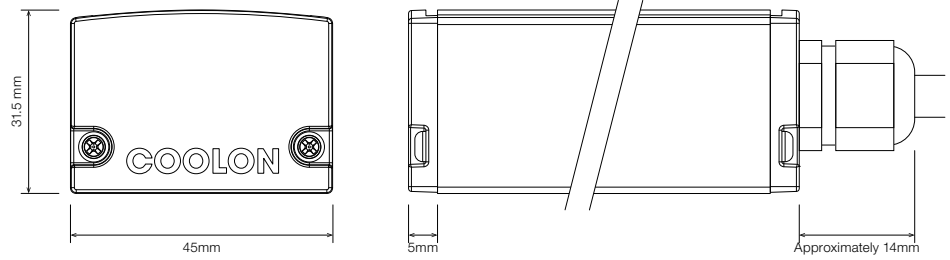


■ DIMENSIONS

For final strip lengths please refer to the "Product Length" table.

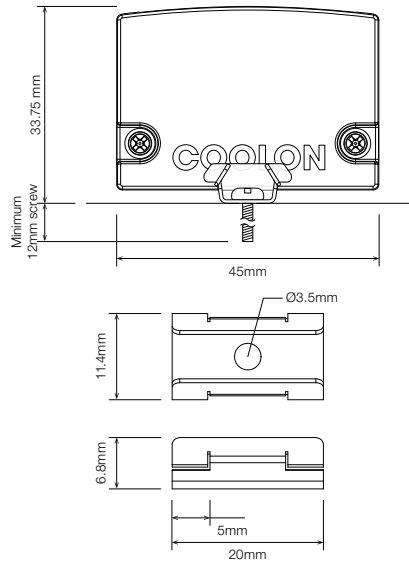


STANDARD PROFILE



STAINLESS STEEL C-CLIP

Clips are required for every 300mm length of luminaire.



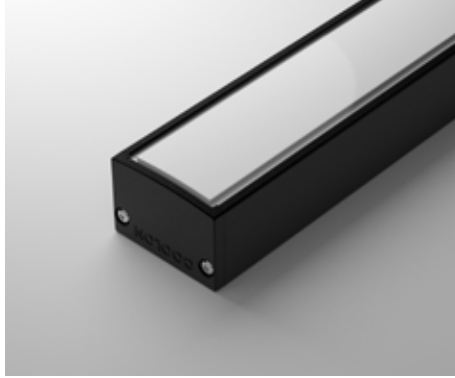
▪ PRODUCT LENGTH

| FULL SEGMENTS | SUB SEGMENTS | FINAL LENGTH |
|---------------|--------------|--------------|
| S0 | A1 | 94.5mm |
| S0 | A2 | 132mm |
| S0 | A3 | 169.5mm |
| S0 | A4 | 207mm |
| S0 | A5 | 244.5mm |
| S0 | A6 | 282mm |
| S0 | A7 | 319.5mm |
| S1 | A0 | 357mm |
| S1 | A1 | 394.5mm |
| S1 | A2 | 432mm |
| S1 | A3 | 469.5mm |
| S1 | A4 | 507mm |
| S1 | A5 | 544.5mm |
| S1 | A6 | 582mm |
| S1 | A7 | 619.5mm |
| S2 | A0 | 657mm |
| S2 | A1 | 694.5mm |
| S2 | A2 | 732mm |
| S2 | A3 | 769.5mm |
| S2 | A4 | 807mm |
| S2 | A5 | 844.5mm |
| S2 | A6 | 882mm |
| S2 | A7 | 919.5mm |
| S3 | A0 | 957mm |
| S3 | A1 | 994.5mm |
| S3 | A2 | 1032mm |
| S3 | A3 | 1069.5mm |
| S3 | A4 | 1107mm |
| S3 | A5 | 1144.5mm |
| S3 | A6 | 1182mm |
| S3 | A7 | 1219.5mm |
| S4 | A0 | 1257mm |
| S4 | A1 | 1294.5mm |
| S4 | A2 | 1332mm |
| S4 | A3 | 1369.5mm |
| S4 | A4 | 1407mm |
| S4 | A5 | 1444.5mm |
| S4 | A6 | 1482mm |
| S4 | A7 | 1519.5mm |
| S5 | A0 | 1557mm |
| S5 | A1 | 1594.5mm |
| S5 | A2 | 1632mm |
| S5 | A3 | 1669.5mm |
| S5 | A4 | 1707mm |
| S5 | A5 | 1744.5mm |
| S5 | A6 | 1782mm |
| S5 | A7 | 1819.5mm |
| S6 | A0 | 1857mm |

| FULL SEGMENTS | SUB SEGMENTS | FINAL LENGTH |
|---------------|--------------|--------------|
| S6 | A1 | 1894.5mm |
| S6 | A2 | 1932mm |
| S6 | A3 | 1969.5mm |
| S6 | A4 | 2007mm |
| S6 | A5 | 2044.5mm |
| S6 | A6 | 2082mm |
| S6 | A7 | 2119.5mm |
| S7 | A0 | 2157mm |
| S7 | A1 | 2194.5mm |
| S7 | A2 | 2232mm |
| S7 | A3 | 2269.5mm |
| S7 | A4 | 2307mm |
| S7 | A5 | 2344.5mm |
| S7 | A6 | 2382mm |
| S7 | A7 | 2419.5mm |
| S8 | A0 | 2457mm |
| S8 | A1 | 2494.5mm |
| S8 | A2 | 2532mm |
| S8 | A3 | 2569.5mm |
| S8 | A4 | 2607mm |
| S8 | A5 | 2644.5mm |
| S8 | A6 | 2682mm |
| S8 | A7 | 2719.5mm |
| S9 | A0 | 2757mm |
| S9 | A1 | 2794.5mm |
| S9 | A2 | 2832mm |
| S9 | A3 | 2869.5mm |
| S9 | A4 | 2907mm |
| S9 | A5 | 2944.5mm |
| S9 | A6 | 2982mm |

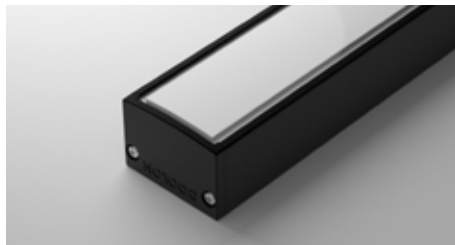
■ DIFFUSER

PT · Polyurethane Translucent

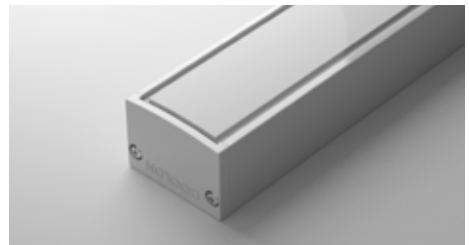


■ PROFILE COLOUR

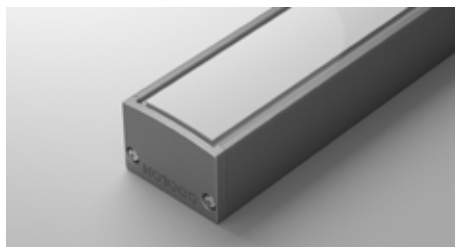
BLK · Black (Standard)



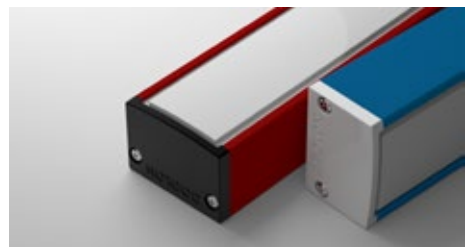
WHT · White



BNA · Brushed Natural Aluminium









CST · Custom Colour ¹



¹ Custom colours available on request

WIRING CONFIGURATION

| CONNECTOR TYPE | DRAWING | MALE | FEMALE |
|---|--|---|--------|
| WR2OS Wire 2 Core One Side |  |  | |
| OC2.1MO Outdoor Connector 2.1pin Male Only |  |  | |
| SMPLC Sample Type Connector 2.5mm |  |  | |

- Typical wiring length 1,000mm.
- Please consult Coolon for details on extension cable between LED fittings, drivers and power supplies.

| WIRING COLOUR CODE | |
|--------------------|-------|
| Red | + VDC |
| Black | GND |

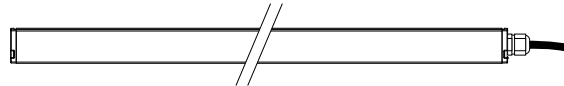
WIRING POSITION

WB - Wire from back



Ideal for fittings installed back-to-back or limited spaces.

WS - Wire from Side



Ideal for fittings installed individually or vertically.

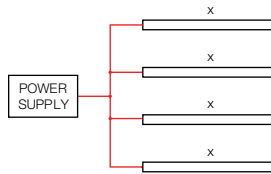
IP RATING

IP66

Fully protected against dust.
Protected against wave-like water jets from all directions.

■ INSTALLATION LIMITS

SCENARIO 1



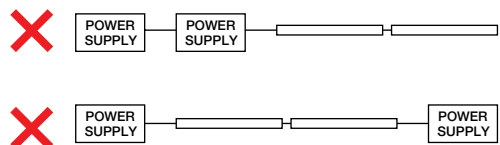
MAX. CONTINUOUS CONNECTION LENGTH (X) CONNECTOR TYPE

2,982 mm With standard 2 bare wires (WR20S)

- Please consult Coolon for details on extension cable between LED fittings, drivers and power supplies.

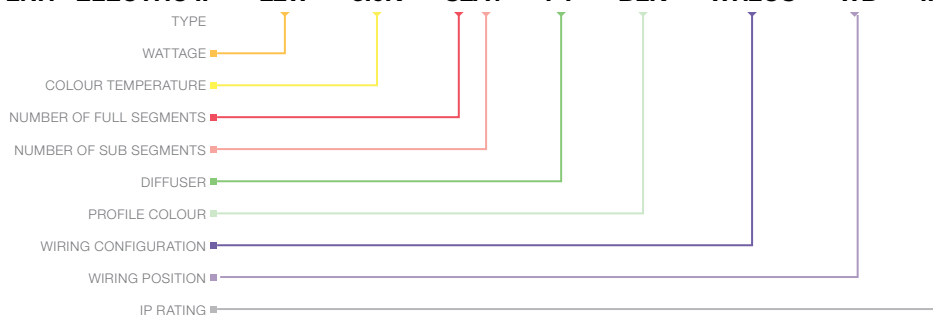
⚠ WARNING

Avoid connecting multiple power supplies into a single circuit, unless they are specifically designed to do so.



ORDERING EXAMPLE

LNR - ELECTRO IP - 22W - 3.0K - S2A1 - PT - BLK - WR2OS - WB - IP66



WATTAGE PAGE 04

| | |
|-----|---------------|
| 22W | 22W per metre |
| 40W | 40W per metre |

COLOUR TEMPERATURE PAGE 04

| | |
|---------|--------------|
| 2.7K | 2700K CRI 80 |
| 2.7KCRI | 2700K CRI 90 |
| 3.0K | 3000K CRI 80 |
| 3.0KCRI | 3000K CRI 90 |
| 4.0K | 4000K CRI 80 |
| 4.0KCRI | 4000K CRI 90 |

PRODUCT LENGTH PAGE 06

| FULL SEGMENTS | SUB SEGMENTS |
|---------------|--------------|
| S1 | A0 |
| S2 | A1 |
| S3 | A2 |
| S4 | A3 |
| S5 | A4 |
| S6 | A5 |
| S7 | A6 |
| S8 | A7 |
| S9 | |

DIFFUSER PAGE 07

| | |
|----|--------------------------|
| PT | Polyurethane Translucent |
|----|--------------------------|

PROFILE COLOUR PAGE 07

| | |
|-----|----------------------------|
| BLK | Black (Standard) |
| WHT | White |
| BNA | Brushed Natural Aluminium |
| CST | Custom Colour ¹ |

WIRING CONFIGURATION PAGE 08

| | |
|---------|------------------------------------|
| WR2OS | Wire 2 Core One Side |
| OC2.1MO | Outdoor Connector 2.1pin Male Only |
| SMPLC | Sample Type Connector 2.5mm |

WIRING POSITION PAGE 08

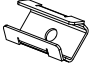


| | |
|----|----------------|
| WB | Wire from Back |
| WS | Wire from Side |

IP RATING PAGE 08

| | |
|------|-------------|
| IP66 | Outdoor Use |
|------|-------------|

¹ Custom colours available on request

■ ACCESSORIES

| | PRODUCT CODE | DESCRIPTION |
|---|------------------------|---|
| MOUNTING CLIP * | | |
|  | MC-C-CLIP | Stainless Steel C-Clip |
| * Recommended spacing between Mounting Clips is maximum 300mm. | | |
| DRIVER | | |
|  | DRV-DALIPOINT-1X5A | DALI 5 Amps 1 Channel LED Driver |
| | DRV-DALIPOINT-1X10A-IP | DALI 10 Amps 1 Channel Outdoor LED Driver |
| | DRV-DIMMERPOINT-1X10A | Rotary Wall-Mount LED Driver |
| POWER SUPPLY FOR OUTDOOR USE (IP67) | | |
|  | PWR-HLG80-42V-IP | Mean Well Power Supply HLG 80W 42V IP67 |
| | PWR-HLG150-42V-IP | Mean Well Power Supply HLG 150W 42V IP67 |
| | PWR-HLG240-42V-IP | Mean Well Power Supply HLG 240W 42V IP67 |