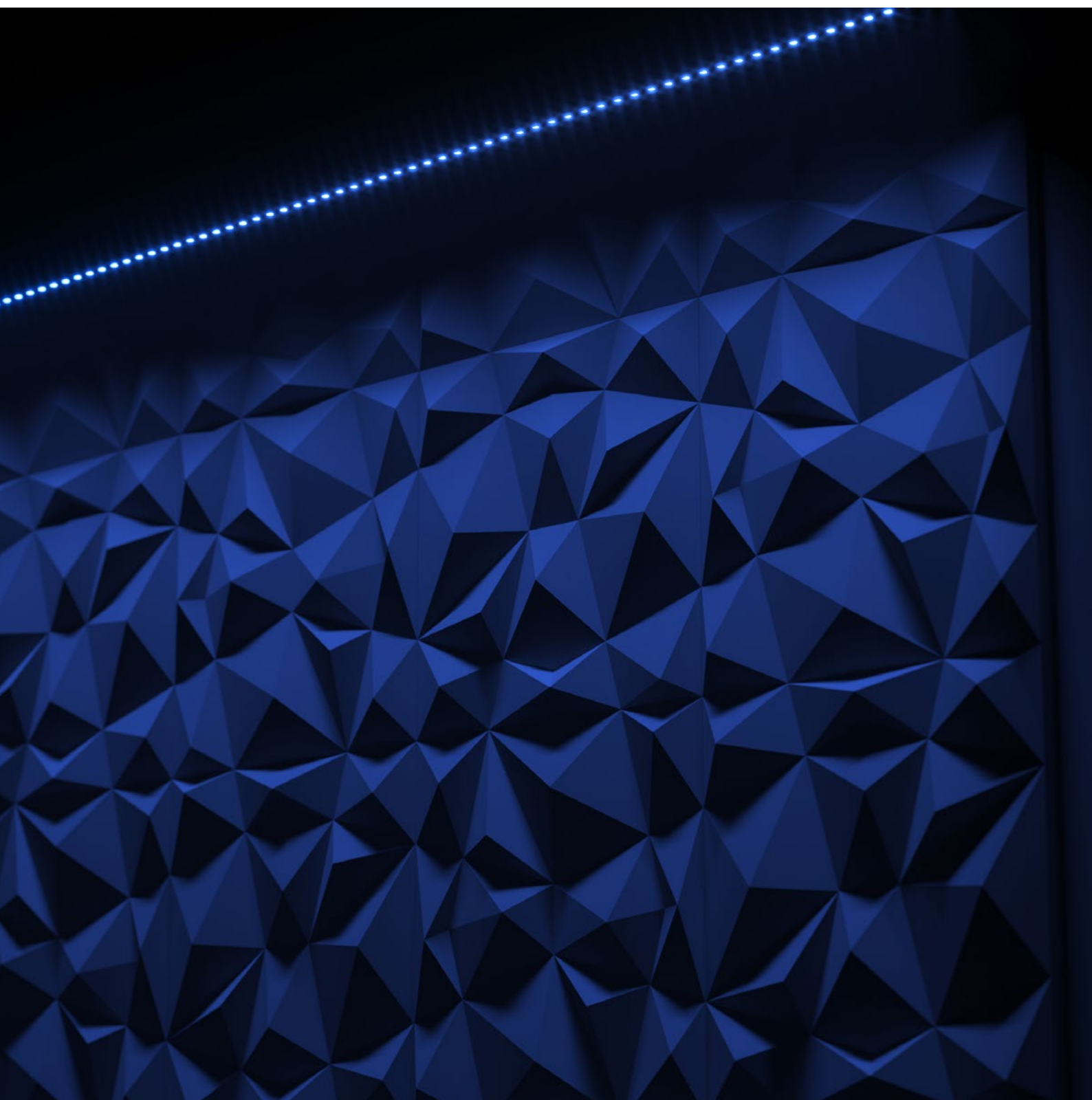
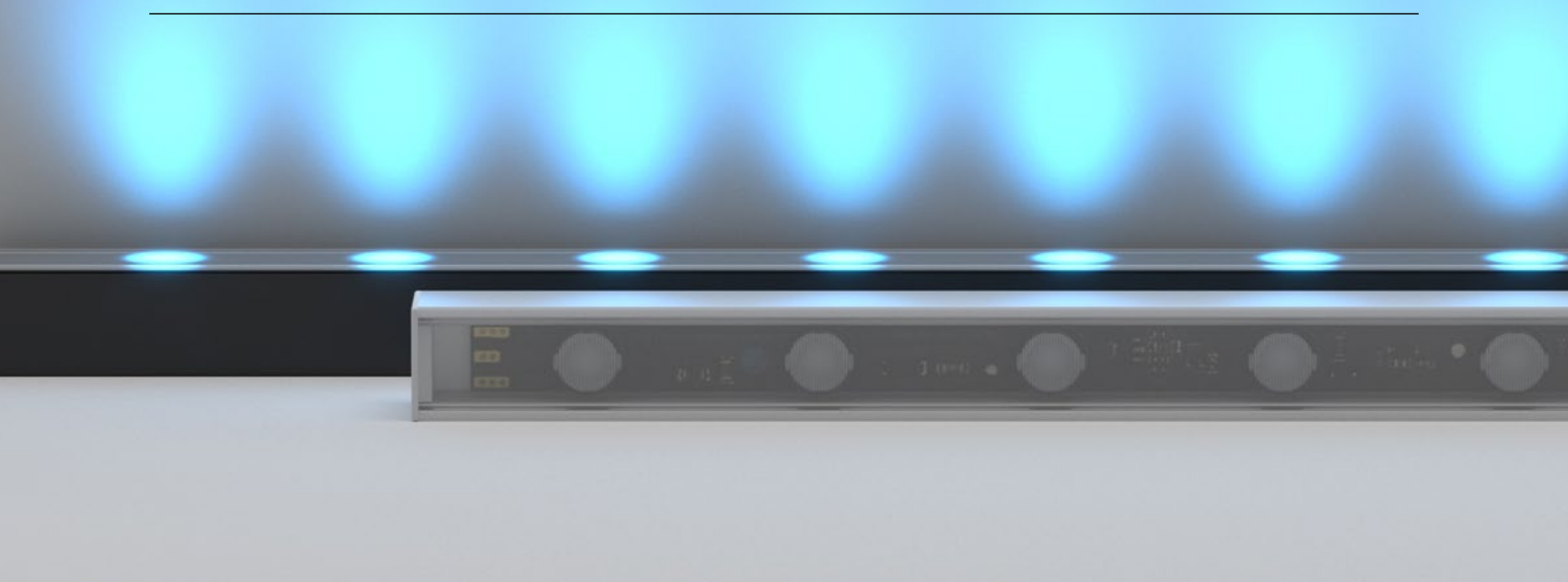




# ADURO X2 C

LED STRIP STR-ADURO X2 C





Aduro X2 C is a compact strip luminaire with precision optics - available in a range of vibrant, static colours. Aduro X2 C provides pure colour without the need for external control, for maximum efficacy and high impact.

With a diminutive 17x17mm profile, this luminaire is offered in two wattages (11W and 23W) and various lengths.

#### POWER

#### LUMINOUS FLUX

##### 11W

11W / metre



**P17D2** • Varies with colour



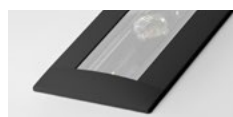
**PR17D2** • Varies with colour

##### 23W

23W / metre



**P17D2** • Varies with colour



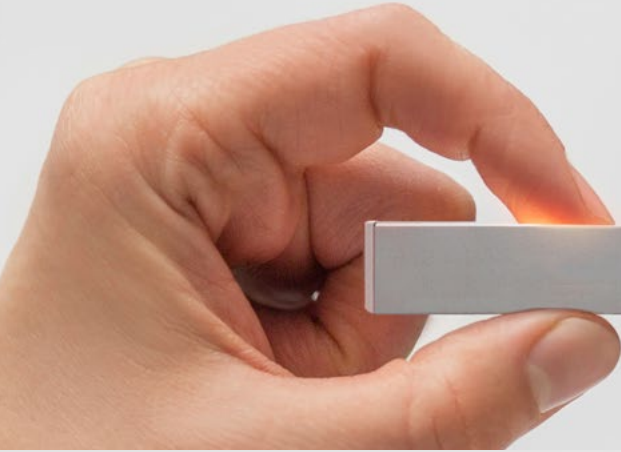
**PR17D2** • Varies with colour

#### COLOURS



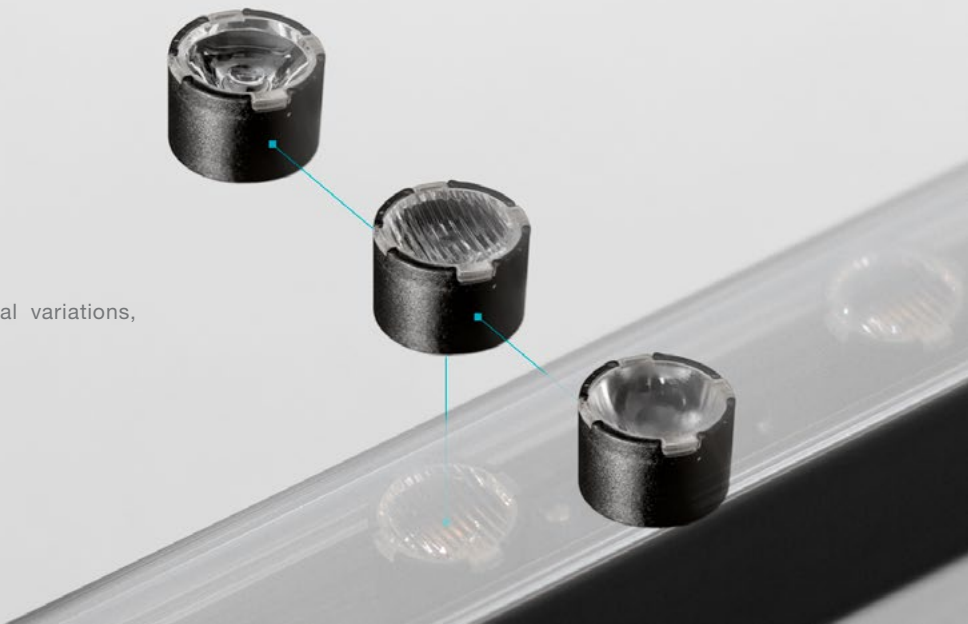
## COMPACT SIZE

Reduced form factor can provide freedom and simplicity to a designer. At only 17x17mm, Aduro X2 C is our smallest LED strip offered with optical control.



## SLIMLINE OPTICS

Aduro X2 C is offered in a range of optical variations, providing precision in each application.



L90

### LONG OPERATING LIFE

Coolon products use the world's most reputable LED manufacturers and the latest available standards to adequately report lumen maintenance. We strive to drive LEDs under their nominal current and use state-of-the-art heat dissipation methods, leading to durable electronics.

5  
YEARS

### 5 YEARS WARRANTY

Coolon luminaires are covered by a solid comprehensive manufacturer's warranty that covers a range of possible defects and performance parameters throughout the duration of the warranty period.



### PROUDLY MADE IN AUSTRALIA

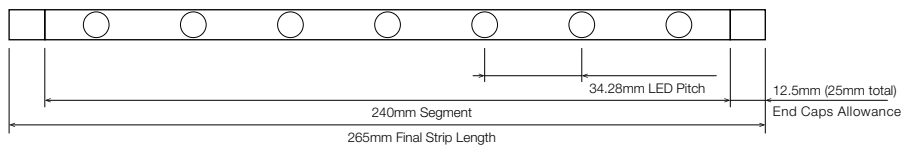
Our products are designed and manufactured in Australia. Engineered to perfection, using only the highest quality components and highly skilled labour, each luminaire is assembled and thoroughly tested to ensure that it exceeds the highest standards.

## ■ TECHNICAL SPECIFICATIONS

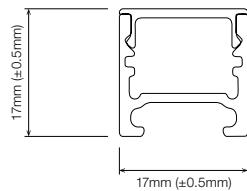
	BLUE	GREEN	RED	AMBER
Product Code	STR-Aduro X2 C			
Description	Aduro X2 C Medium Power Beam Control LED Strip			
Segment Length (S)	240mm			
Segment Width	10.50mm			
LED Pitch	34.28mm			
LEDs Per Segment	7			
Operating Voltage	24VDC			
Dimmable	Through CTR-DALILOGIC or CTR-DIMMERLOGIC (sold separately)			
Effective Beam Angle	Varies with optics (30° – 110°)			
External Heatsink Required	No			
Ambient Operating Temp	Ta -10°C to 50°C			
Thermal Operating	Yes (Active)			
Reported Lumen Maintenance	L70 (17K) > 103,000 hours			
TM21-11 (@ Ts = 85°C, If = 700mA)	L90 (17K) > 103,000 hours			
	Aduro X2 max. operating values (@ Ts = 40°C, If = 230mA)			
IP Rating	IP40			
Max Continuous Connection Length	Please refer to installation limitations (Page 09)			

DIMENSIONS

For final strip lengths please refer to the "Product Length" table.



P17 PROFILE



AVAILABLE IN

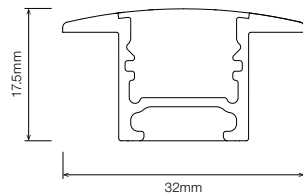
Diffused



MOUNTING OPTIONS

- **MC-STR-SMCLIP**  
Pivot Surface Mounting Clip
- **MC-XCLIP**  
Flat Mount X-Clip
- **MC-STR-RBCLIP**  
Rebate Mounting Clip
- **MC-STR-P17R**  
Rotating Clip Mount

PR17 RECESSED PROFILE



AVAILABLE IN

Diffused



MOUNTING OPTIONS

- **MC-STR-SMCLIP**  
Pivot Surface Mounting Clip
- **MC-XCLIP**  
Flat Mount X-Clip
- **MC-STR-PR17**  
Spring Mounting Clip

<sup>1</sup> MC-XCLIP only available for IP40 rated fittings.



Click on the download icon to view more information regarding mounting and rebate suggestions.

## PRODUCT LENGTH WITH P17

FULL SEGMENTS	EXACT STRIP LENGTH	P17 END CAP ALLOWANCE	P17 FINAL LENGTH
S1	240mm	add 25mm	265mm
S2	480mm	add 25mm	505mm
S3	720mm	add 25mm	745mm
S4	960mm	add 25mm	985mm
S5	1,200mm	add 25mm	1,225mm
S6	1,440mm	add 25mm	1,465mm
S7	1,680mm	add 25mm	1,705mm
S8	1,920mm	add 25mm	1,945mm
S9	2,160mm	add 25mm	2,185mm
S10	2,400mm	add 25mm	2,425mm
S11	2,640mm	add 25mm	2,665mm
S12	2,880mm	add 25mm	2,905mm
S13	3,120mm	add 25mm	3,145mm
S14	3,360mm	add 25mm	3,385mm

Confirm interstate courier compliance

Custom length subject to availability

## PRODUCT LENGTH WITH PR17

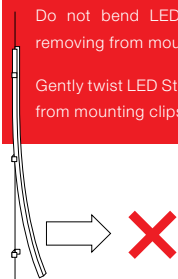
FULL SEGMENTS	EXACT STRIP LENGTH	PR17 END CAP ALLOWANCE	PR17 FINAL LENGTH
RS1	240mm	add 40mm	280mm
RS2	480mm	add 40mm	520mm
RS3	720mm	add 40mm	760mm
RS4	960mm	add 40mm	1,000mm
RS5	1,200mm	add 40mm	1,240mm
RS6	1,440mm	add 40mm	1,480mm
RS7	1,680mm	add 40mm	1,720mm
RS8	1,920mm	add 40mm	1,960mm
RS9	2,160mm	add 40mm	2,200mm
RS10	2,400mm	add 40mm	2,440mm
RS11	2,640mm	add 40mm	2,680mm

Confirm interstate courier compliance

### ⚠ WARNING

Do not bend LED strip when removing from mounting clips.

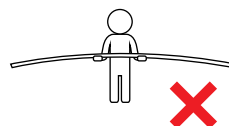
Gently twist LED Strip to remove from mounting clips.



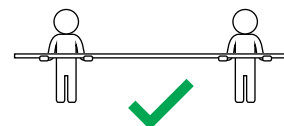
### ⚠ WARNING

PLEASE HANDLE LONG LED STRIPS WITH CARE.

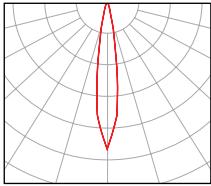
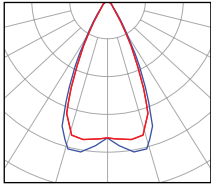
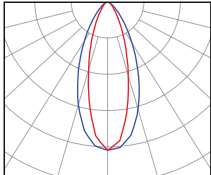
LED Strips must not be bent.



When handling LED Strips, please ensure that they are kept straight.



## ■ POLAR DISTRIBUTION

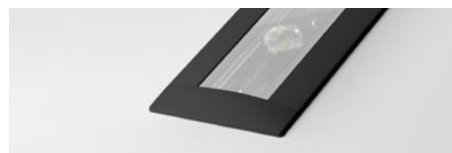
OPTIC	BEAM ANGLE	POLAR DISTRIBUTION
L15	25° – 30° Beam	
L25	42° – 50° Beam	
O209	Oval 40° x 18° Beam	

## ■ PROFILE / DIFFUSER

**P17D2** - P17 Profile Diffused



**PR17D2** - PR17 Profile Recessed Diffused



## ■ PROFILE COLOUR

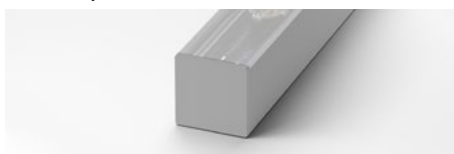
**BLK** - Black (Standard)



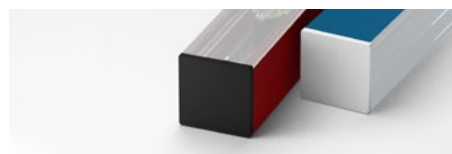
**WHT** - White



**GRY** - Grey



**CST** - Custom Colour <sup>1</sup>



<sup>1</sup> Custom colours available on request.

WIRING CONFIGURATION

CONNECTOR TYPE	DRAWING	MALE	FEMALE
WR2.1OS Wire 2+1 Core One Side			
WR2.1BS Wire 2+1 Core Both Sides			
OC2.1MO Connector 2+1 pin Male Only			
OC2.1MF Connector 2+1 pin Male + Female			
SMPLC.1 Sample Type Connector 2.5mm			

- For detailed information on Outdoor IP67 connector please contact Coolon.
- Please consult Coolon for details on extension cable between LED fittings, drivers and power supplies.

WIRING COLOUR CODE	
Red	+ VDC
Black	GND
White	PWM Control

IP RATING

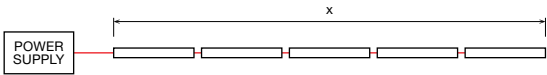
IP40

Protected against solid objects greater than 1mm. No protection against liquids.

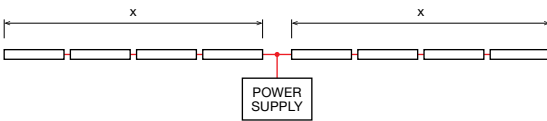


■ INSTALLATION LIMITS

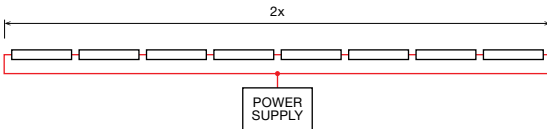
SCENARIO 1



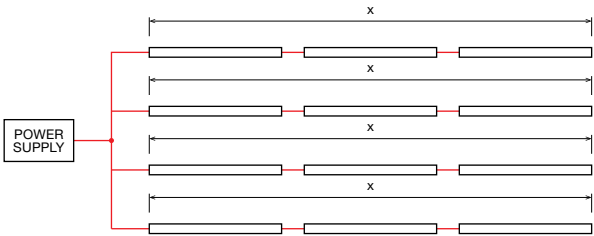
SCENARIO 2



SCENARIO 3



SCENARIO 4



11W VERSION

MAX. CONTINUOUS CONNECTION LENGTH (X)	CONNECTOR TYPE
12,200 mm	With 2+1 core (WR2.1OS / WR2.1BS)
5,500 mm	With 2+1 pin connectors (OC2.1MO / OC2.1MF / SMPLC.1)

- Please consult Coolon for details on extension cable between LED fittings, drivers and power supplies.

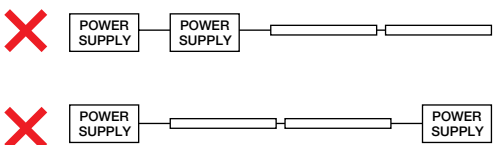
23W VERSION

MAX. CONTINUOUS CONNECTION LENGTH (X)	CONNECTOR TYPE
5,800 mm	With 2+1 core (WR2.1OS / WR2.1BS)
2,500 mm	With 2+1 pin connectors (OC2.1MO / OC2.1MF / SMPLC.1)

- Please consult Coolon for details on extension cable between LED fittings, drivers and power supplies.

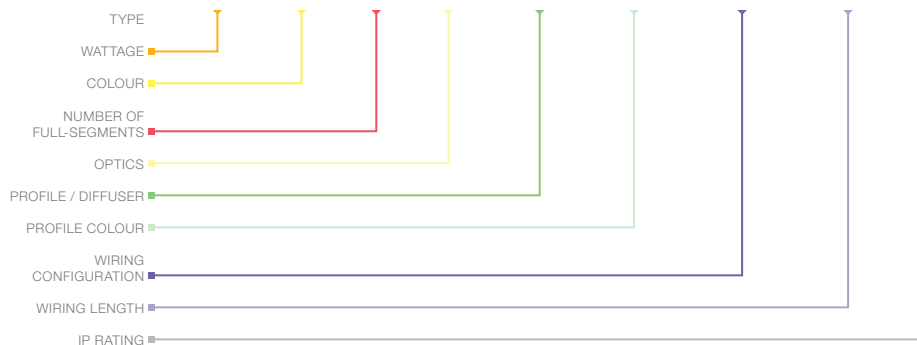
**⚠ WARNING**

Avoid connecting multiple power supplies into a single circuit, unless they are specifically designed to do so.



## ORDERING EXAMPLE

**STR - ADURO X2 C - 23W - BLU - S2 - L25 - P17D2 - BLK - WR2.1BS - 100 - IP40**



### ■ WATTAGE

11W	10.5W per metre
23W	23W per metre

### ■ COLOUR PAGE 04

BLU	Blue
GRN	Green
RED	Red
AMB	Amber

### ■ PRODUCT LENGTH PAGE 06

<b>P17</b>	
S1	265mm
S2	505mm
S3	745mm
S4	985mm
S5	1,225mm
S6	1,465mm
S7	1,705mm
S8	1,945mm
S9	2,185mm
S10	2,425mm
S11	2,665mm
S12	2,905mm
S13	3,145mm
S14	3,385mm
<b>PR17</b>	
RS1	280mm
RS2	520mm
RS3	760mm
RS4	1,000mm
RS5	1,240mm
RS6	1,480mm
RS7	1,720mm
RS8	1,960mm
RS9	2,200mm
RS10	2,440mm
RS11	2,680mm

### ■ OPTICS PAGE 07

L15	25° – 30° Beam
L25	42° – 50° Beam
O209	Oval 40° x 18° Beam

### ■ PROFILE / DIFFUSER PAGE 08

P17D2	P17 Profile Diffused
PR17D2	PR17 Recessed Profile Diffused

### ■ PROFILE COLOUR <sup>1</sup> PAGE 08

BLK	Black (Standard)
WHT	White
GRY	Grey
CST	Custom Colour

### ■ WIRING CONFIGURATION PAGE 09

WR2.1OS	Wire 2+1 Core One Side
WR2.1BS	Wire 2+1 Core Both Sides
OC2.1MO	Connector 2+1 pin Male Only
OC2.1MF	Connector 2+1 pin Male + Female
SMPLC.1	Sample Type Connector 2.5mm

### ■ WIRING LENGTH PAGE 09

100	100mm
250	250mm
500	500mm
1000	1000mm

### ■ IP RATING PAGE 09

IP40	Indoor Use
------	------------

<sup>1</sup> Custom colours available on request.

## ■ ACCESSORIES

	PRODUCT CODE	DESCRIPTION
	<b>MOUNTING CLIP <sup>1</sup></b>	
	MC-STR-SMCLIP	Pivot Surface Mounting Clip
	MC-XCLIP	Flat Mount X-Clip
	MC-STR-RBCLIP	Rebate Mounting Clip
	MC-STR-P17R-BLK	Rotating Clip Mount for P17 Profile - Black
	MC-STR-P17R-WHT	Rotating Clip Mount for P17 Profile - White
	MC-STR-PR17	Spring Mounting Clip for PR17 Recessed Profile
<sup>1</sup> Recommended spacing for Mounting Clips is maximum 500mm.		
	<b>CONTROLLER</b>	
	CTR-A2PWM 0-10V	Analogue to PWM converter for 0 – 10V dimming signal
	CTR-DIMMERLOGIC	Coolon Universal Wall Dimmer with 0 – 10V and PWM Logic Output
	CTR-DALI-LOGIC	Indoor DALI Point 1 channel Driver with PWM Logic Output
	CTR-DALILOGIC-IP	Outdoor DALI Point 1 channel Driver with PWM Logic Output
	<b>POWER SUPPLY</b>	
	PWR-HLG-60H-24AU	Mean Well Power Supply HLG 60W 24V IP67
	PWR-HLG-150H-24AU	Mean Well Power Supply HLG 150W 24V IP67
	PWR-HLG-240H-24AU	Mean Well Power Supply HLG 240W 24V IP67
	PWR-HLG-320H-24AU	Mean Well Power Supply HLG 320W 24V IP67
	<b>CABLE EXTENSIONS</b>	
	CBLEXT-STR-WR2.1-IP40-3M	3m Cable Extension for Strips Red, Black and White, 0.75mm <sup>2</sup> wire
	CBLEXT-STR-WR2.1-IP40-5M	5m Cable Extension for Strips Red, Black and White, 0.75mm <sup>2</sup> wire
	CBLEXT-STR-OC2.1-IP65-3M	3m Connector Extension for Strips 1x Red, 1x Black, 1x White, 0.75mm <sup>2</sup> wires
	CBLEXT-STR-OC2.1-IP65-5M	5m Connector Extension for Strips 1x Red, 1x Black, 1x White, 0.75mm <sup>2</sup> wires