



 COOLON

BULKHEAD / EM BULKHEAD

35W/42W Bulkhead Light

High performance, versatile, retrofit compatible bulkhead light

The Bulkhead is a high performance and versatile light that has been carefully engineered with feedback from mining maintenance crews to ensure easy installation of a robust and virtually indestructible luminaire

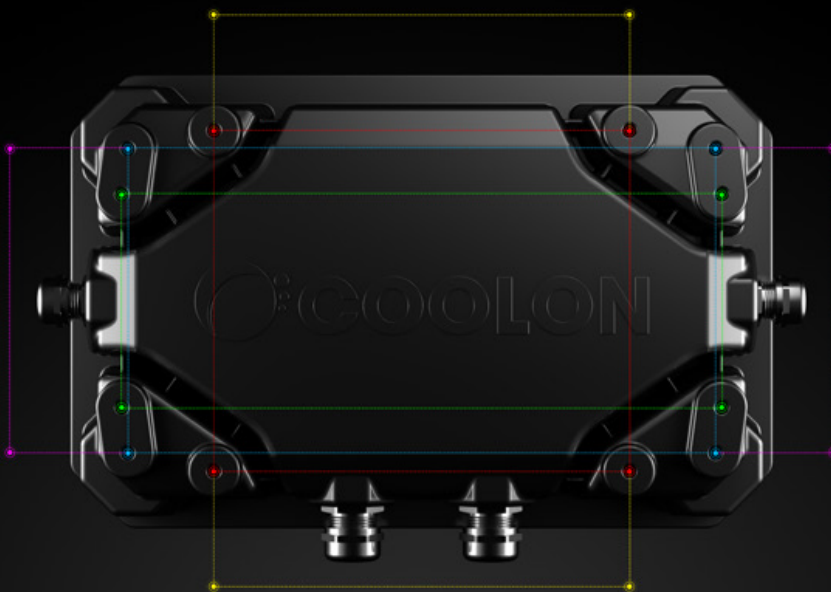
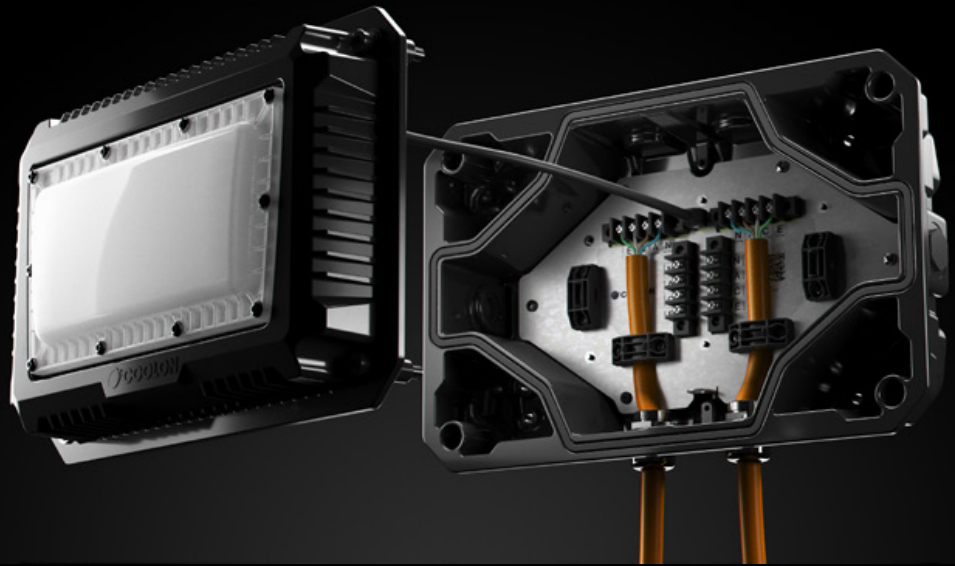
Designed for use in:

- Exit Routes
- Platforms
- Walkways
- Stairwells
- Substation
- Tunnels
- Conveyors



Designed with the installer in mind

Multiple entry points, easily-accessible terminal block, and removable body. All these aspects make installation a breeze. "Straight off, straight on!"



Universal mount design

Designed with a universal mount to retrofit the hole patterns of most common bulkhead lights on the market, the Coolon Bulkhead is easy and quick to install.



COOL SURFACE TEMPERATURE

Coolon's Industrial LED fittings have a much lower surface temperature than traditional HID equivalents which prevents dirt from baking onto the luminaire. This allows for easier cleaning and will prolong the lifespan of the luminaire.



NO FLICKERING

LED luminaires run on constant low voltage DC power and do not produce any visible stroboscopic effects, thus reducing the strain on eyes and significantly improving safety in areas where moving machinery is present.



LOW SUSCEPTIBILITY TO VIBRATION

This luminaire is designed to handle continuous exposure to vibration. A typically critical issue affecting the life and operation of most common gas discharge lamp based light sources is mechanical shock and vibration.

5
YEARS

5 YEARS FACTORY WARRANTY

Coolon luminaires are covered by a solid comprehensive manufacturer's warranty that covers a range of possible defects and performance parameters throughout the duration of the warranty period.



INSTANT ON/OFF

LEDs do not require warm up. Instant on to 100% output translates to no downtime, improved safety and the ability to utilize sensor switching to significantly save energy.

IP66

HIGH IP RATING - IP66

Coolon's Industrial LEDs are designed specifically to withstand the harsh conditions in mining environments. The robust design allows our LED products to be used in many different applications and are high pressure washable.

L70

LONG USEFUL OPERATING LIFE

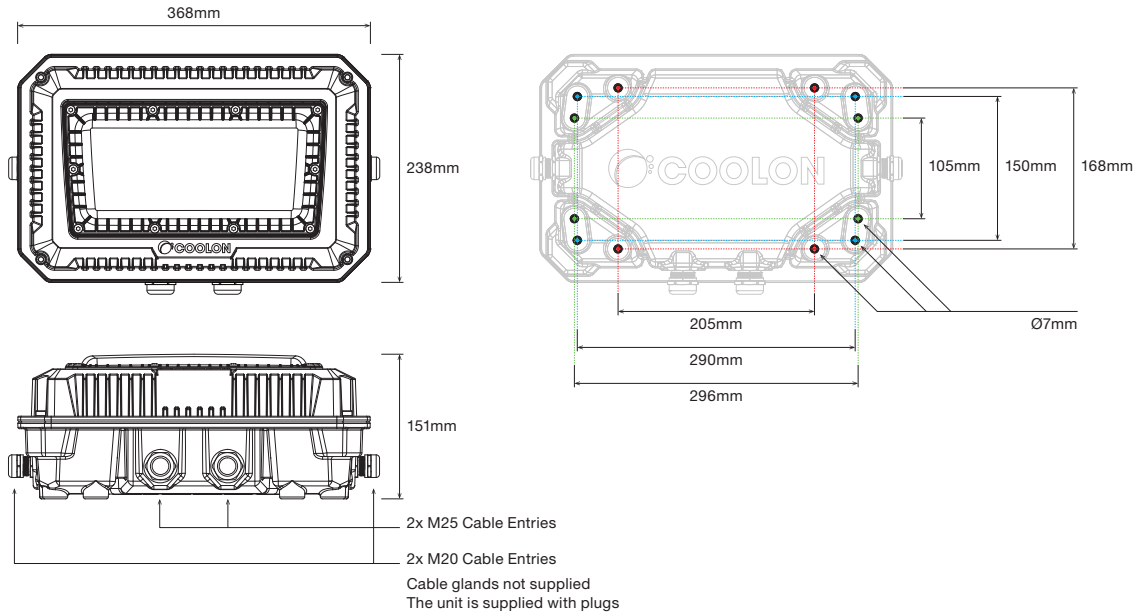
Currently available specification from world's most reputable LED manufacturers states 50,000 hours of continuous operation at the rated current within the operating temperature range to 70% residual light output.



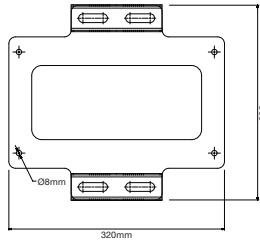
PROUDLY MADE IN AUSTRALIA

Our products are designed and manufactured in Australia. Engineered to perfection, using only the highest quality components and highly skilled labour, each luminaire is assembled and thoroughly tested to ensure that it exceeds the highest standards.

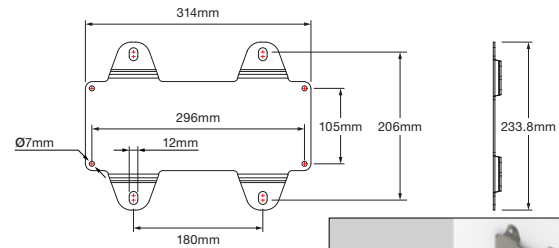
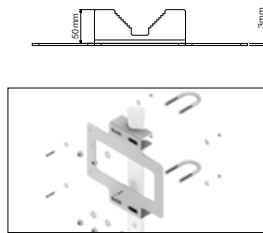
DIMENSIONS



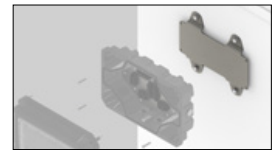
ACCESSORIES



Optional Bulkhead Pole Mounting Bracket
(available separately) refer to industrial accessories brochure. visit coolon.com.au to download now.



Optional Versalux EBH Adapter Plate
(available separately) refer to industrial accessories brochure. visit coolon.com.au to download now.



TECHNICAL SPECIFICATIONS

Product	Bulkhead Industrial LED	
Model	BH	EMBH
Optical Characteristics		
Luminous Flux (Photometered)	4,236 lm	3,883 lm 1,470 lm (Emergency Mode)
CCT	CWT / WWT / AMB	
CRI	>70 excluding amber	
Electrical		
Power Consumption	35W	42W
Nominal Voltage	230VAC	230VAC
Voltage Range	180 – 440VAC 254 – 550VDC	90 – 277VAC 127 – 350VDC
Frequency Range	47 – 63Hz	47 – 63Hz
Power Factor (PF)	≥0.98 / 230VAC	≥0.95 / 230VAC
Leakage Current	<0.75mA / 440VAC	<0.75mA / 277VAC
Charge Time	-	16 hours
Battery Type	-	LiFePO ₄
Discharge Time	-	120 minutes initial / 90 minutes in service

Mechanical / Environmental	
IP Rating	IP66
Impact Rating	IK09
Salt Spray Tested	Yes
Operating Temp. Range	-20 to +50°C 0 to +50°C
Thermal Management Type	Active/Continuous
Expected Lifespan	50,000 Hours to 70% Brightness
Material Composition (Body)	ADC12 Aluminium Alloy Polyester Powder Coated
Material Composition (Cover)	Polycarbonate
Entry Cable	2x M20 + 2x M25

Weight/Packaging	
Luminaire Weight	5.6kg 6.8kg
Packaging Dimensions	400 x 280 x 180mm
Packaged Weight	6.1kg 7.3kg

Compliance (Safety Standards)	
AS/NZS 60598.1	Luminaires - General Requirements and Tests
AS/NZS 60598.2.1	Luminaires - Particular requirements - Fixed general purpose luminaires
AS/NZS 2293	Emergency lighting and exit signs for buildings

Compliance (EMC)	
AS/NZS CISPR15	Limits and methods of measurement of radio disturbance characteristics of electrical lighting and similar equipment

Warranty	
Warranty	5 years warranty as standard

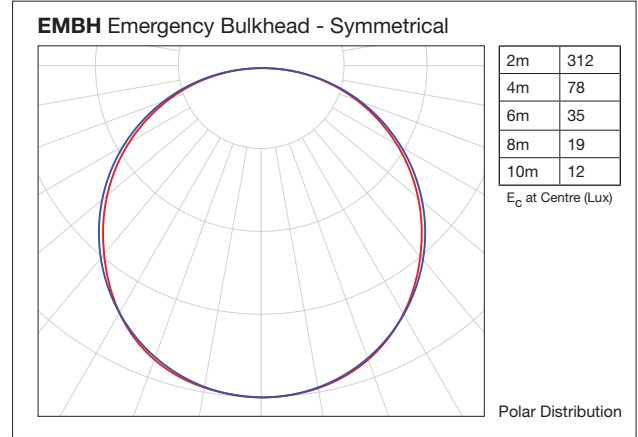
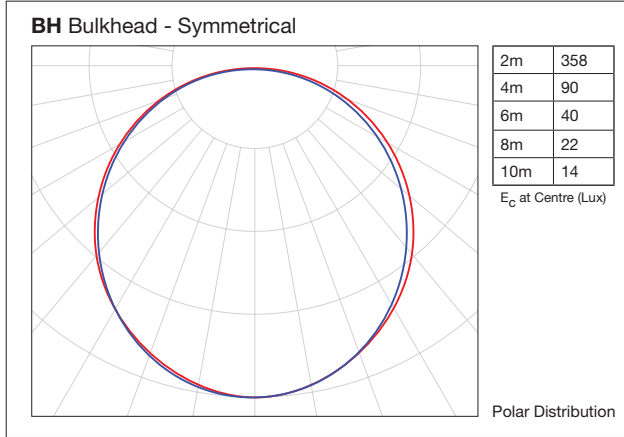
Optical and electrical characteristics are measured using Cool White LEDs (CWT) Reading taken while test unit operating in steady state. Ambient temperature during testing is typically 25°C. Individual unit behaviour may differ due to electronic component tolerance and ambient conditions. Product parameters and application suitability shall be checked by the user prior to commissioning.

COLOUR TEMPERATURES



All colour temperatures are indicative. Some variation can occur.

POLAR DISTRIBUTION



EMERGENCY BH (EMBH)



The EMBH utilises a solid state integral emergency module. The emergency power is provided by safe LiFePO₄ cells with a host of intelligent management circuitry. The EMBH performs constant operational readiness tests, ensuring reliable emergency lighting will be available when needed. The onboard processor will notify the user should the unit ever need attention allowing operators to better utilise their time.

With a balance between performance, intelligence and reliability, the EMBH is the ultimate industrial integral EM luminaire.



ORDERING EXAMPLE

BH - CWT - SY1 - MP

PRODUCT COLOUR TEMP OPTICS SUPPLY OPTION

PRODUCT	COLOUR TEMP	OPTICS	SUPPLY OPTION
BH Bulkhead	CWT Cool White	SY1 Symmetrical / Diffuser	MP Mains Powered
EMBH Emergency Bulkhead	WWT Warm White AMB Amber		

CUSTOM UNITS ORDERING EXAMPLE

CST - BH - CWT - SY1 - MP - WMG

PRODUCT COLOUR TEMP OPTICS SUPPLY OPTION ACCESSORY

PRODUCT	COLOUR TEMP	OPTICS	SUPPLY OPTION	ACCESSORY
CST-BH Custom Bulkhead	CWT Cool White	SY1 Symmetrical / Diffuser	MP Mains Powered	WMG Stainless Steel Wire Mesh Guard
CST-EMBH Custom Emergency Bulkhead	WWT Warm White AMB Amber			



CST - BH - CWT - SY1 - MP - SHIELD

PRODUCT COLOUR TEMP OPTICS SUPPLY OPTION ACCESSORY

PRODUCT	COLOUR TEMP	OPTICS	SUPPLY OPTION	ACCESSORY
CST-BH Custom Bulkhead	CWT Cool White	SY1 Symmetrical / Diffuser	MP Mains Powered	SHIELD Stainless Steel Light Shield
CST-EMBH Custom Emergency Bulkhead	WWT Warm White AMB Amber			

