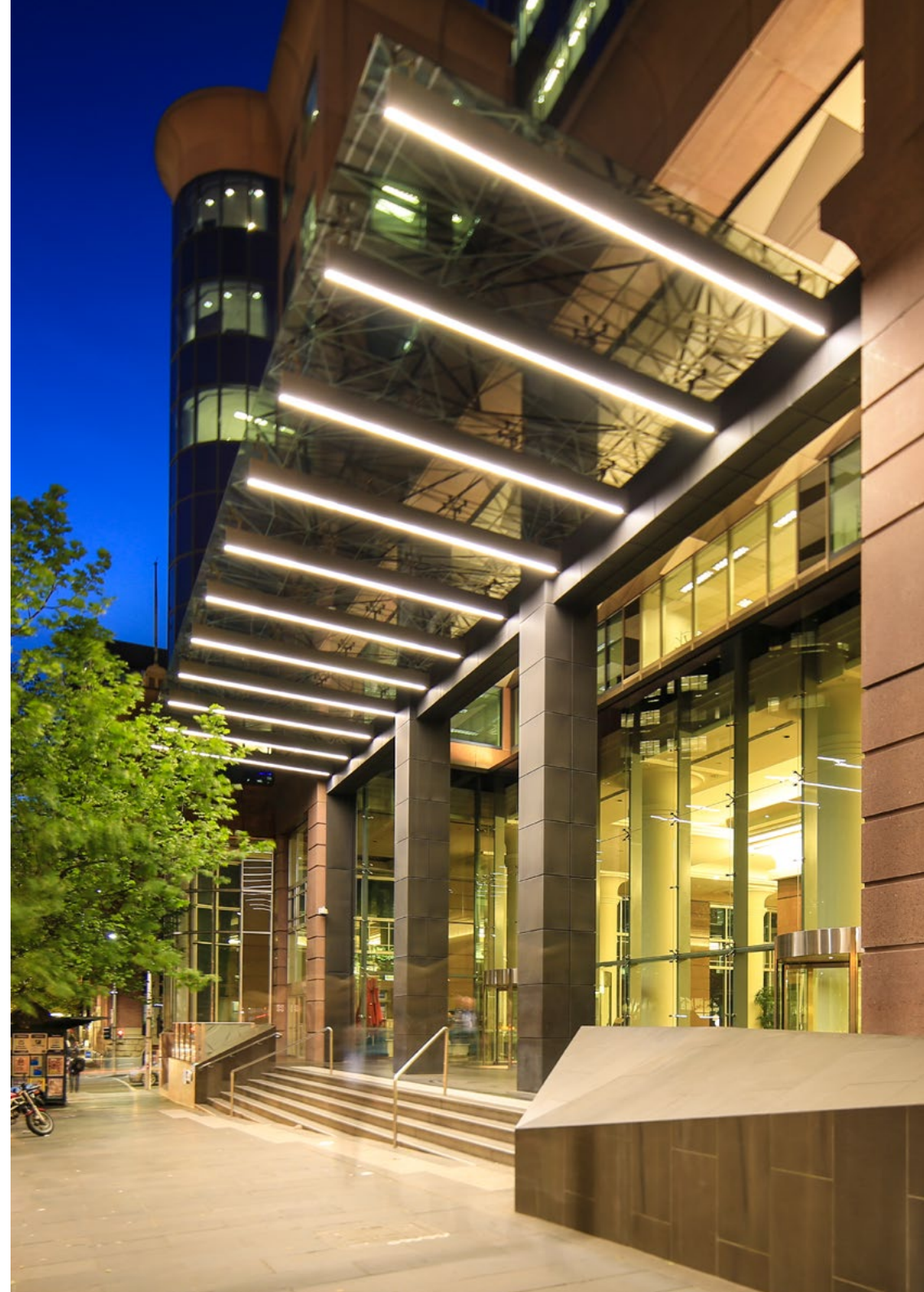


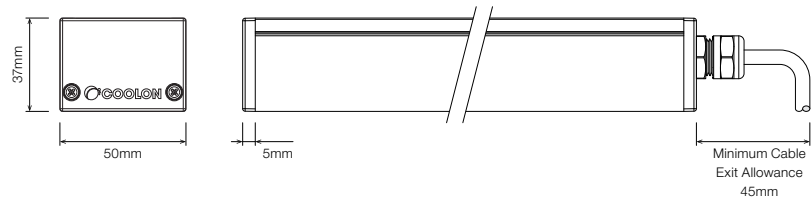


BEAM INSTALLATION INSTRUCTIONS

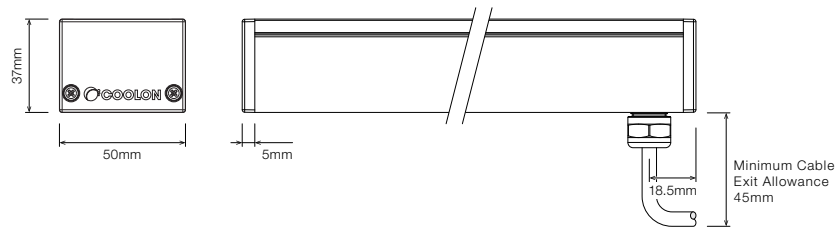


■ PROFILE DIMENSIONS

Wire from side



Wire from back

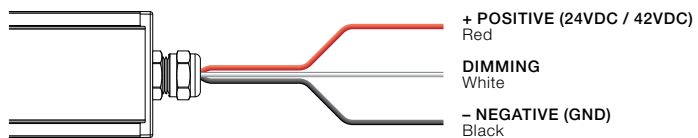


⚠ ATTENTION

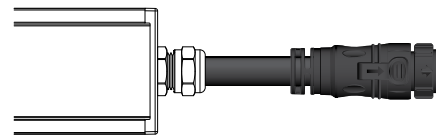
- Please observe / follow the instructions methodically.
- Please ensure the units are handled with extreme care.
- Do not remove LED strips from packaging prematurely. Only remove from packaging when ready for installation.
- Failure to observe installation instructions and handling will void warranty of the product.
- Fittings must be installed by a licensed electrician.
- Before installing, make sure the power supply is switched off.

■ WIRING OPTIONS

3 wires (RBW)



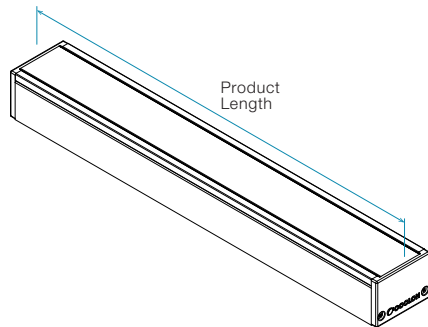
2pin Male connector - Outdoor only



▪ STEP 1

Before you begin installation, ensure that you understand the fitting layout required as supplied fitting lengths may vary. Refer to the supplied cut sheet for length breakdowns.

* For fittings 1 metre or longer two installers are recommended.

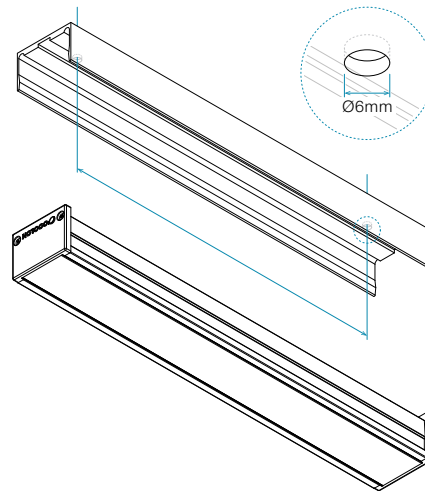


▪ STEP 2

Separate the Beam Luminaire from the mounting extrusion. Measure and mark extrusion for screw holes, refer to the table for required quantity.

Use even spacing where possible and ensure screws holes line up with the anchorage. Drill Ø6mm holes through the mounting extrusion.

* Ensure that anchorage is sufficient for the weight of the fitting. Weight of Beam IP40 = 1.9kg per meter.



Fitting Reference	Minimum QTY. of Screws Required
S1, S2	2
S3, S4, S5	3
S6, S7	5
S8, S9, S10	7
S11, S12, S13	9

▪ STEP 3 (WIRED FROM BACK ONLY)

If the fitting is wired from the back the it will need to be wired up before mounting. Cable must be installed through pre-drilled hole in mounting extrusion.

Ensure that you have allowed enough space to accommodate the cable gland exiting the back. Wire the fitting to the correct power supply as advised on the cut sheet.

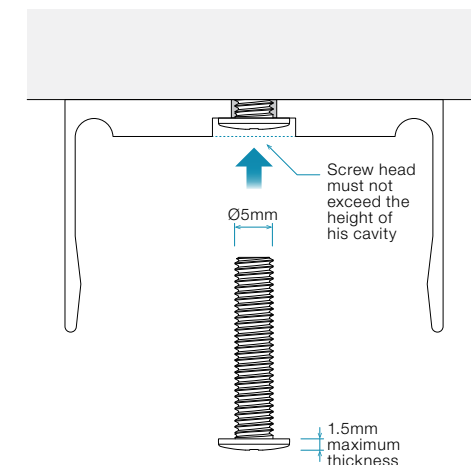


▪ STEP 4

Prepare screws (Ø5mm, screw head cannot exceed a thickness off 1.5mm). Starting at one end Insert a screw through drilled hole and drill into the previously installed anchorage. Continue with next hole along until screws are fastened.

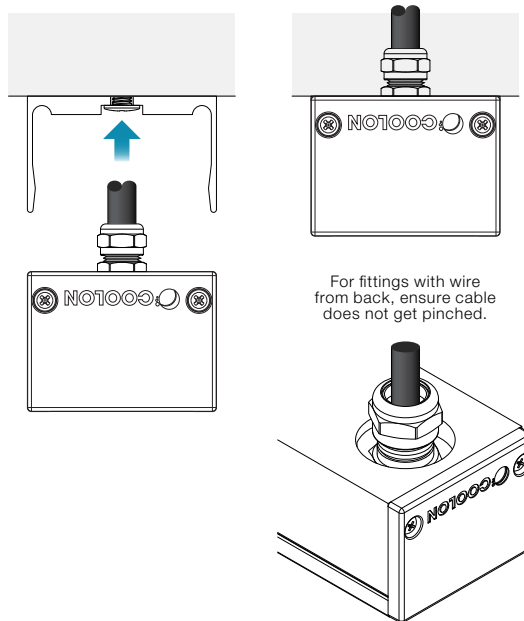
Tighten the screws manually ,revisit one by one to ensure that all are secured tightly.

* Ensure that screw head is flush with the mounting extrusion.



STEP 5

Push Beam luminaire into mounting extrusion until it locks into place. For fittings with wiring from the back, ensure that all cable is tucked carefully into the cable gland and does not get pinched.



STEP 6 (WIRED FROM SIDE ONLY)

If the fitting is wired from the side its will need to be wired after mounting.

Wire the fitting to the correct power supply as advised on the cut sheet.

