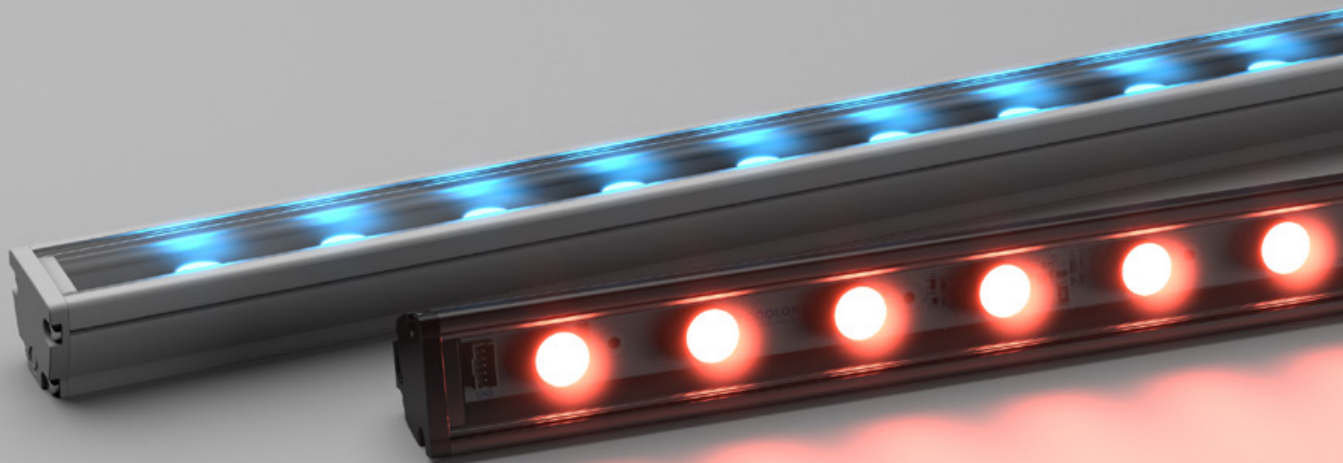




MAX MINI C

LINEAR MEDIUM POWER LNR-MAX MINI C





Max Mini C is a medium-power luminaire with precision optics - available in a range of vibrant, static colours. Pure colour is provided without the need for external control, for maximum efficacy and high impact.

Execute unique and vibrant effects with optical control and the assistance of range of brackets that ensure easy installation and accurate aiming.

POWER

LUMINOUS FLUX

33W

33W / metre



SC - Varies with colour



HL - Varies with colour



ML - Varies with colour

COLOURS

Blue

Green

Red

Amber



COMPACT SIZE

The reduced profile dimensions allow for ease of installation in confined spaces that could not be achieved with previous halogen counterparts. When installed in visible sight, Max Mini C also pays respect to the interior design with minimal disruption to the aesthetics.



OPTICAL VARIATIONS

Max Mini C comes in a range of optical variations, offering the ability to maximise performance in each unique application.

L90

LONG OPERATING LIFE

Coolon products use the world's most reputable LED manufacturers and the latest available standards to adequately report lumen maintenance. We strive to drive LEDs under their nominal current and use state-of-the-art heat dissipation methods, leading to durable electronics

5
YEARS

5 YEARS WARRANTY

Coolon luminaires are covered by a solid comprehensive manufacturer's warranty that covers a range of possible defects and performance parameters throughout the duration of the warranty period.



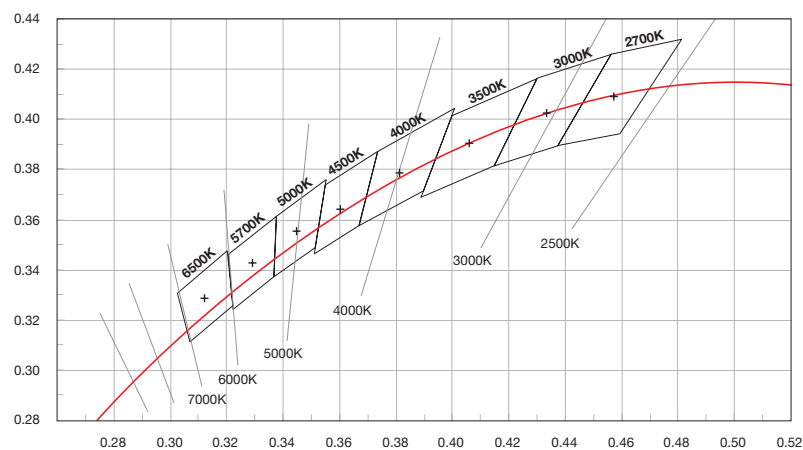
PROUDLY MADE IN AUSTRALIA

Our products are designed and manufactured in Australia. Engineered to perfection, using only the highest quality components and highly skilled labour, each luminaire is assembled and thoroughly tested to ensure that it exceeds the highest standards.

TECHNICAL SPECIFICATIONS

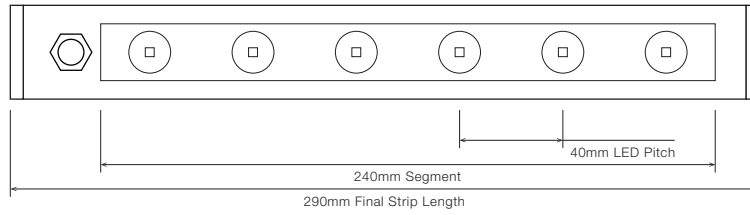
	BLUE	GREEN	RED	AMBER
Product Code	LNR-MAX MINI C			
Description	Max Mini C Linear Medium Power Projector			
Body	Aluminium Alloy Body			
Finish	Powder Coated Black (Standard), Various Colours Available			
Cover	Polycarbonate Clear for Indoor Applications			
End Caps	Polycarbonate			
Segment Length (S)	240mm			
Segment Width	22mm			
LED Pitch	40mm			
LEDs Per Segment	6			
Operating Voltage	24VDC			
Dimmable	Through CTR-A2PWM 0-10V, CTR-DIMMERLOGIC, CTR-DALILOGIC or CTR-DALILOGIC-IP (sold separately)			
Luminous Flux per Metre (lm/m)	Varies with colour			
External Heatsink Required	No			
Ambient Operating Temp	Ta -10°C to 50°C			
Thermal Operating	Yes (Active)			
Reported Lumen Maintenance TM21-11 (@ Ts = 85°C, If = 500mA)	L70 (18K) > 109,000 hours L90 (18K) > 103,000 hours Max Mini max. operating values (@ Ts = 50°C, If = 325mA)			
IP Rating	IP40 (Standard)			
Max Continuous Connection Length	Please refer to installation limitations			

COLOUR BINNING

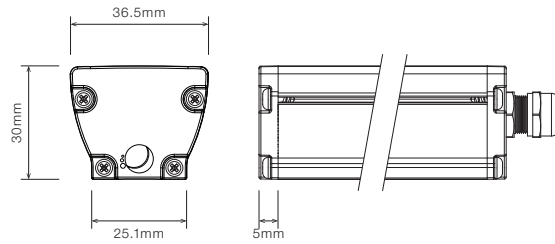


■ DIMENSIONS

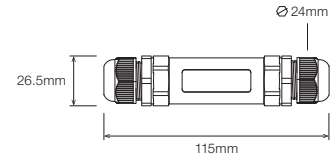
For final strip lengths please refer to the "Product Length" table.



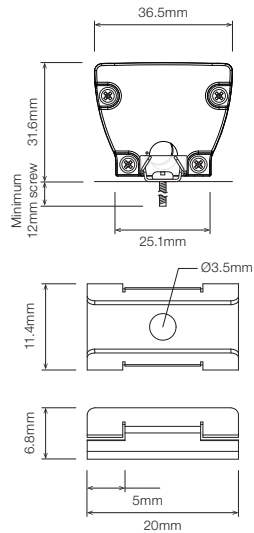
STANDARD PROFILE



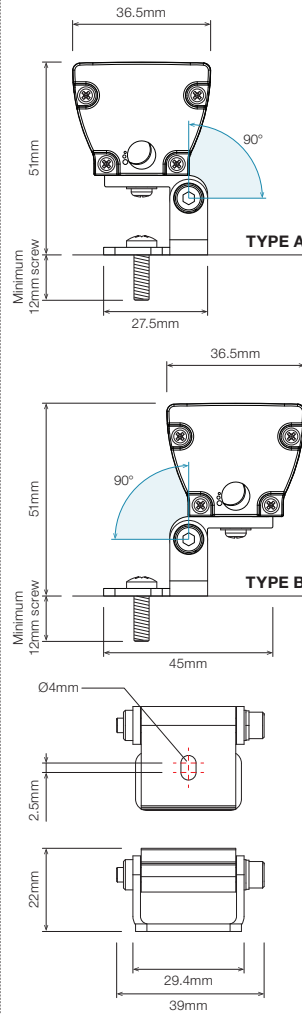
CABLE EXTENSION JOINER



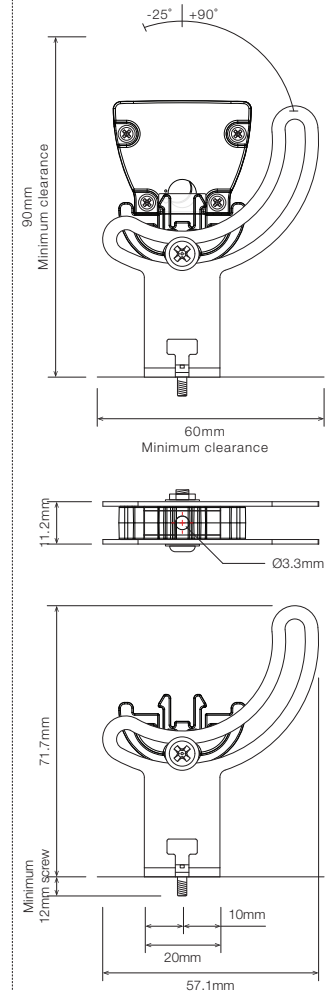
STAINLESS STEEL C-CLIP ¹



ROTATING MOUNTING BRACKET, TYPE A/B ROTATING CLIP ¹



ELEVATED ROTATING MOUNTING BRACKET ^{1 2}

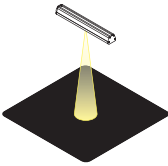
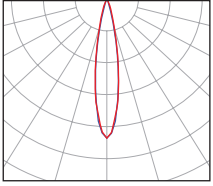
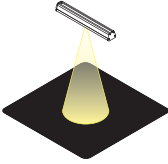
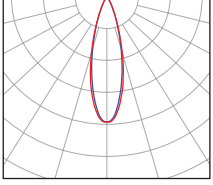
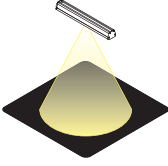
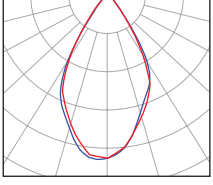
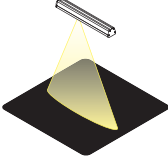
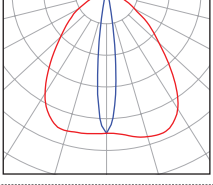
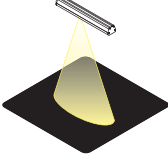
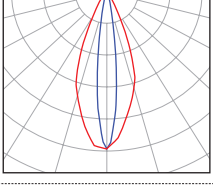
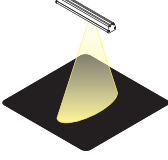
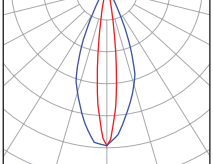


¹ Recommended spacing between Mounting Brackets is maximum 500mm and Mounting Clips is maximum 300mm.
² Elevated rotating bracket is the only suitable option when wire from back is required.

■ PRODUCT LENGTH

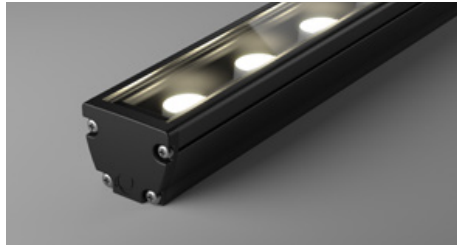
FULL SEGMENTS	EXACT STRIP LENGTH	FINAL LENGTH
S1	240mm	290mm
S2	480mm	530mm
S3	720mm	770mm
S4	960mm	1,010mm
S5	1,200mm	1,250mm
S6	1,440mm	1,490mm
S7	1,680mm	1,730mm
S8	1,920mm	1,970mm
S9	2,160mm	2,210mm
S10	2,400mm	2,450mm
S11	2,640mm	2,690mm
S12	2,880mm	2,930mm

■ POLAR DISTRIBUTION

OPTIC		POLAR DISTRIBUTION
14D Narrow Beam 14° Beam Angle		
30D Medium Beam 30° Beam Angle		
50D Wide Beam 50° Beam Angle		
F10020D Flare Beam Flare 100° x 20° Beam Angle		
O4018D Oval Beam Oval 40° x 18° Beam Angle		
R4018D Oval Rotated Beam Oval 18° x 40° Beam Angle		

▪ DIFFUSER

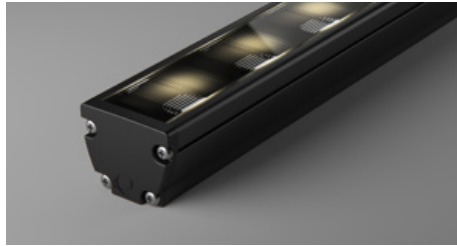
SC · Standard Clear Cover



HL · Honeycomb Louvre

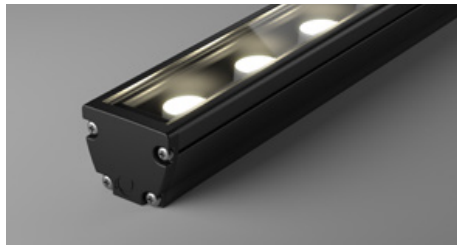


ML · Micro Louvre



▪ PROFILE COLOUR

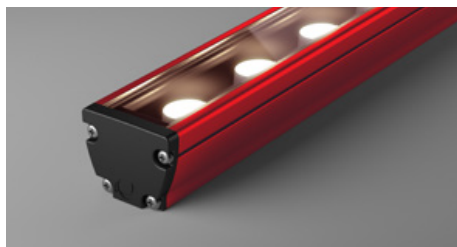
BLK · Black



WHT · White

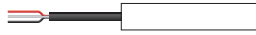





CST · Custom Colour ¹



¹ Custom colours available on request

WIRING CONFIGURATION

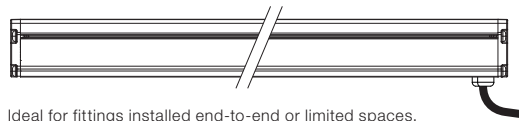
CONNECTOR TYPE	DRAWING	MALE	FEMALE
WR2.10S Wire 2+1 Core One Side			
SMPLC.1 Sample Type Connector 2.5mm			

- Typical wiring length 1,000mm.
- Please consult Coolon for details on extension cable between LED fittings, drivers and power supplies.

WIRING COLOUR CODE	
Red	+ VDC
Black	GND
White	Dimming

WIRING POSITION

WB - Wire from back



Ideal for fittings installed end-to-end or limited spaces.

WS - Wire from Side



Ideal for fittings installed individually or vertically.

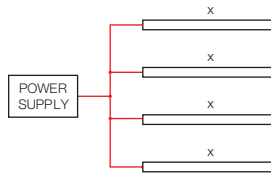
IP RATING

IP40

Protected against solid objects greater than 1mm. No protection against liquids.

■ INSTALLATION LIMITS

SCENARIO 1



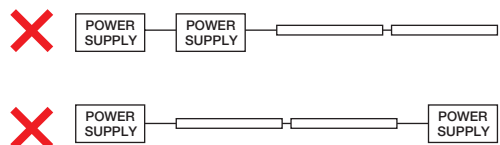
MAX. CONTINUOUS CONNECTION LENGTH (X) CONNECTOR TYPE

2,930 mm With standard 2+1 bare wires (WR2.10S)

- Please consult Coolon for details on extension cable between LED fittings, drivers and power supplies.

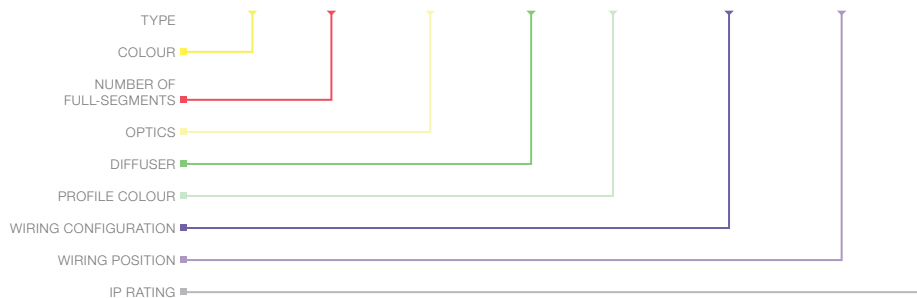
⚠ WARNING

Avoid connecting multiple power supplies into a single circuit, unless they are specifically designed to do so.



■ ORDERING EXAMPLE

LNR - MAX MINI C - BLU - S2 - O4018D - SC - BLK - WR2.1OS - WB - IP40



■ COLOUR PAGE 04

BLU	Blue
GRN	Green
RED	Red
AMB	Amber

■ PRODUCT LENGTH PAGE 06

S1	290mm
S2	530mm
S3	770mm
S4	1010mm
S5	1,250mm
S6	1,490mm
S7	1,730mm
S8	1,970mm
S9	2,210mm
S10	2,450mm
S11	2,690mm
S12	2,930mm

■ OPTICS PAGE 06

14D	14° Beam
30D	30° Beam
50D	50° Beam
F10020D	Flare 100° x 20° Beam
O4018D	Oval 40° x 18° Beam
R4018D	Oval 18° x 40° Beam

■ DIFFUSER PAGE 07

SC	Standard Clear
HL	Honeycomb Louvre
ML	Micro Louvre

■ PROFILE COLOUR PAGE 07

BLK	Black (Standard)
WHT	White
CST	Custom Colour ¹

■ WIRING CONFIGURATION PAGE 08

WR2.1OS	Wire 2+1 Core One Side
SMPLC.1	Sample Type Connector 2.5mm

■ WIRING POSITION PAGE 08

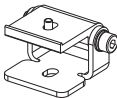
WB	Wire from Back
WS	Wire from Side

■ IP RATING PAGE 08


IP40	Indoor Use
------	------------


¹ Custom colours available on request


■ ACCESSORIES

	PRODUCT CODE	DESCRIPTION
MOUNTING ¹		
	MC-CCLIP	Stainless Steel C-Clip
	MBR-RB-TA-BLK	Rotating Bracket, TYPE A Rotating Clip - Black
	MBR-RB-TB-BLK	Rotating Bracket, TYPE B Rotating Clip - Black
	MBR-PMAX-E-BLK	Elevated Rotating Mounting Bracket for Max Mini - Black
	MBR-PMAX-E-WHT	Elevated Rotating Mounting Bracket for Max Mini - White

¹ Recommended spacing between Mounting Brackets is maximum 500mm and Mounting Clips is maximum 300mm.

	PRODUCT CODE	DESCRIPTION
CONTROLLER		
	CTR-A2PWM 0-10V	Analogue to PWM converter for 0-10V dimming signal
	CTR-DIMMERLOGIC	Coolon Universal Wall Dimmer with 0-10V and PWM Logic Output
	CTR-DALI-LOGIC	Indoor DALI Point 1 channel Driver with PWM Logic Output
	CTR-DALILOGIC-IP	Outdoor DALI Point 1 channel Driver with PWM Logic Output

	PRODUCT CODE	DESCRIPTION
POWER SUPPLY FOR OUTDOOR USE		
	PWR-HLG-60H-24AU	Mean Well Power Supply HLG 60W 24V IP67
	PWR-HLG-150H-24AU	Mean Well Power Supply HLG 150W 24V IP67
	PWR-HLG-240H-24AU	Mean Well Power Supply HLG 240W 24V IP67
	PWR-HLG-320H-24AU	Mean Well Power Supply HLG 320W 24V IP67

	PRODUCT CODE	DESCRIPTION
CABLE EXTENSIONS		
	CBLEXT-LNR-WR2.1-IP65-3M	3m Length, 3 Core RBW 16AWG Cable Extension with outdoor joiner
	CBLEXT-LNR-WR2.1-IP65-5M	5m Length, 3 Core RBW 16AWG Cable Extension with outdoor joiner
	CBLEXT-LNR-WR2.1-IP65-10M	10m Length, 3 Core RBW 16AWG Cable Extension with outdoor joiner
	CBLEXT-LNR-WR2.1-IP65-20M	20m Length, 3 Core RBW 16AWG Cable Extension with outdoor joiner