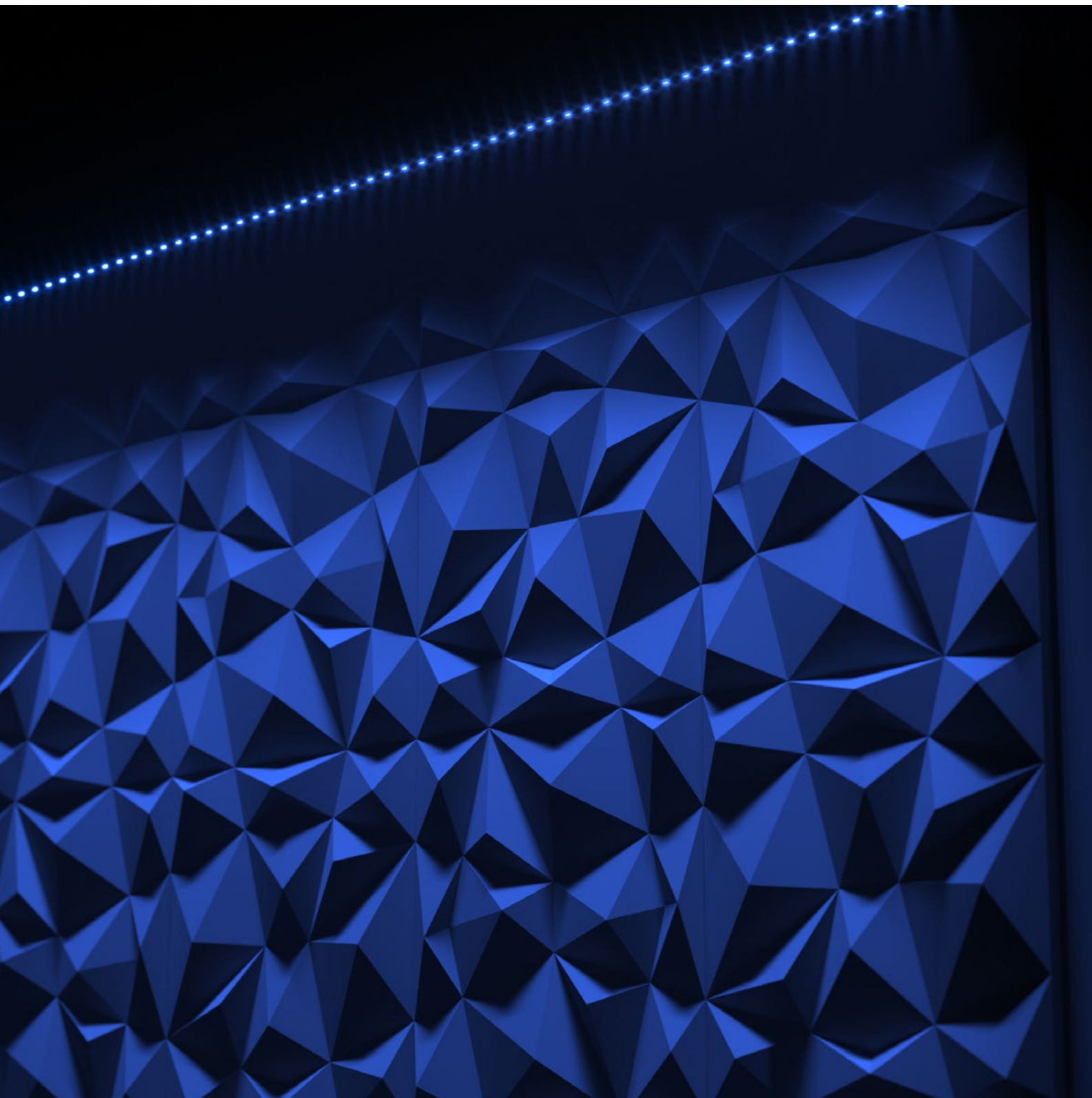




ARIS C

LINEAR MEDIUM POWER LNR-ARIS C





A compact and understated medium-power luminaire with precision optics - available in a range of vibrant, static colours.

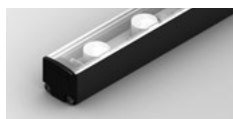
Execute unique and vibrant effects with ease, pure colour is provided without the need for external control, for maximum efficacy and high impact.

POWER

33W

33W / metre

LUMINOUS FLUX



SC - Varies with colour

COLOURS

Blue

Green

Red

Amber

COMPACT SIZE

Reduced form factor is key on demanding projects where minimal disruption to the aesthetic is important. At 25x25mm, Aris C can be hidden in the most unassuming of places.



OPTICAL VARIATIONS

Aris C is available in a range of optical variations, offering the ability to maximise performance in each unique application.

L90

LONG
OPERATING
LIFE

Coolon products use the world's most reputable LED manufacturers and the latest available standards to adequately report lumen maintenance. We strive to drive LEDs under their nominal current and use state-of-the-art heat dissipation methods, leading to durable electronics.

5
YEARS

5 YEARS
WARRANTY

Coolon luminaires are covered by a solid comprehensive manufacturer's warranty that covers a range of possible defects and performance parameters throughout the duration of the warranty period.



PROUDLY MADE
IN AUSTRALIA

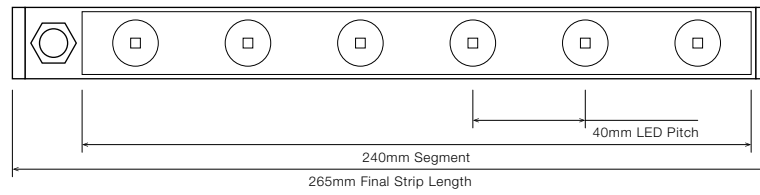
Our products are designed and manufactured in Australia. Engineered to perfection, using only the highest quality components and highly skilled labour, each luminaire is assembled and thoroughly tested to ensure that it exceeds the highest standards.

TECHNICAL SPECIFICATIONS

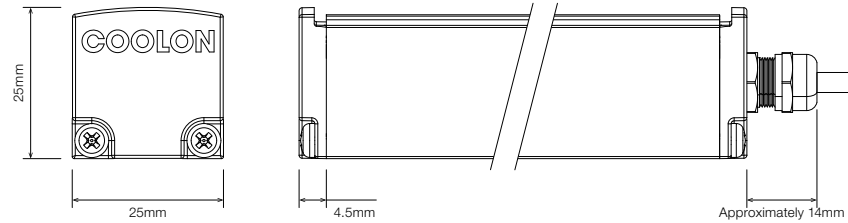
	BLUE	GREEN	RED	AMBER
Product Code	LNR-ARIS C			
Description	Aris C Linear Medium Power Projector			
Body	Aluminium Alloy Body			
Finish	Powder Coated Black (Standard), Various Colours Available			
Cover	Polycarbonate Clear for Indoor Applications			
End Caps	Polycarbonate			
Segment Length (S)	240mm			
Segment Width	22mm			
LED Pitch	40mm			
LEDs Per Segment	6			
Operating Voltage	24VDC			
Typical Power Consumption per Metre	33.0W per Metre			
Dimmable	Through CTR-A2PWM 0-10V, CTR-DIMMERLOGIC, CTR-DALILOGIC or CTR-DALILOGIC-IP (sold separately)			
Luminous Flux per Metre (lm/M)	1,600 lm / Metre			
Ambient Operating Temp	Ta -10°C to 50°C			
Thermal Management	Yes (Active)			
Reported Lumen Maintenance TM21-11 (@ Ts = 85°C, If = 500mA)	L70 (18K) > 109,000 hours L90 (18K) > 103,000 hours Aris C max. operating values (@ Ts = 50°C, If = 325mA)			
IP Rating	IP40 (Standard)			
Max Continuous Connection Length	Please refer to installation limitations			

■ DIMENSIONS

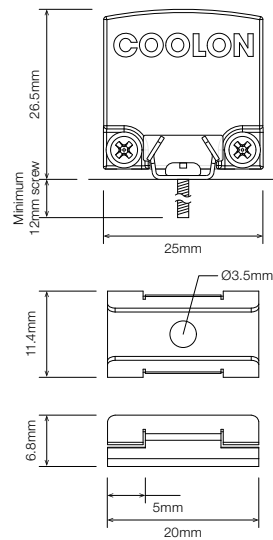
For final strip lengths please refer to the "Product Length" table.



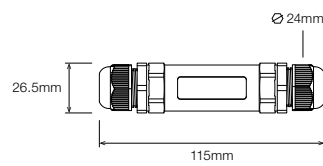
STANDARD PROFILE



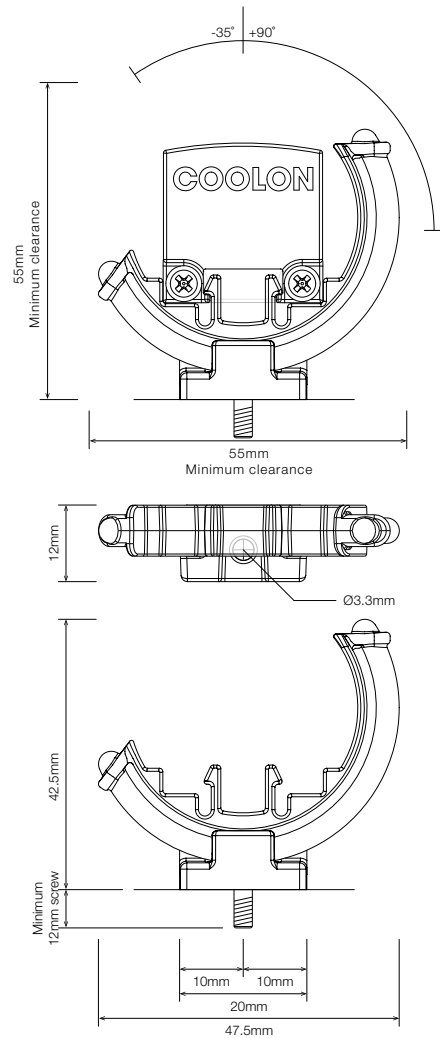
STAINLESS STEEL C-CLIP ¹



CABLE EXTENSION JOINER



ROTATING MOUNTING BRACKET ¹


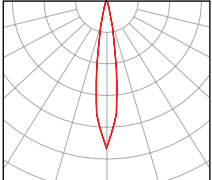

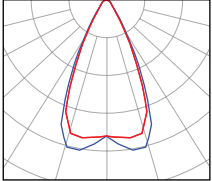

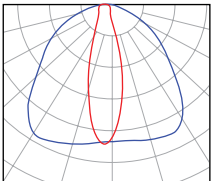

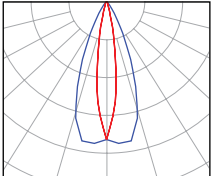


¹ Recommended spacing between Mounting Brackets is maximum 500mm and Mounting Clips is maximum 300mm.

PRODUCT LENGTH

FULL SEGMENTS	EXACT STRIP LENGTH	FINAL LENGTH
S1	240mm	269mm
S2	480mm	509mm
S3	720mm	749mm
S4	960mm	989mm
S5	1,200mm	1,229mm
S6	1,440mm	1,469mm
S7	1,680mm	1,709mm
S8	1,920mm	1,949mm
S9	2,160mm	2,189mm
S10	2,400mm	2,429mm
S11	2,640mm	2,669mm
S12	2,880mm	2,909mm

POLAR DISTRIBUTION

OPTIC	BEAM ANGLE	POLAR DISTRIBUTION
L07 	14° Beam	
L25 	50° Beam	
F5010 	Flare 100° x 20° Beam	
O209 	Oval 40° x 18° Beam	

▪ DIFFUSER

SC - Standard Clear Cover

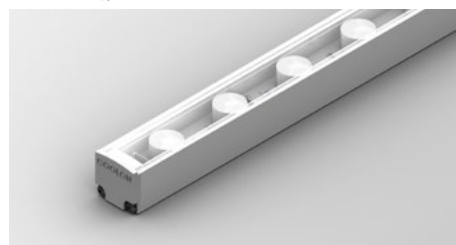


▪ PROFILE COLOUR

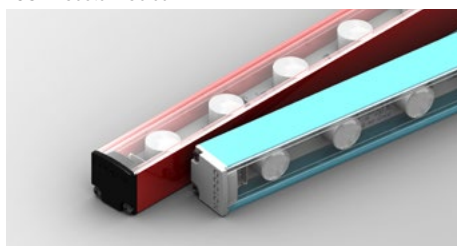
BLK - Black



WHT - White



CST - Custom Colour ¹



¹ Custom colours available on request

WIRING CONFIGURATION

CONNECTOR TYPE	DRAWING	MALE	FEMALE
WR2.1OS Wire 2+1 Core One Side			
OC2.2MO Outdoor Connector 2.2pin Male Only			
SMPLC.1 Sample Type Connector 2.5mm			

- Typical wiring length 1,000mm.
- Please consult Coolon for details on extension cable between LED fittings, drivers and power supplies.

WIRING COLOUR CODE	
Red	+ VDC
Black	GND
White	Dimming

WIRING POSITION

WB - Wire from back



Ideal for fittings installed back-to-back or limited spaces.

WS - Wire from Side



Ideal for fittings installed individually or vertically.

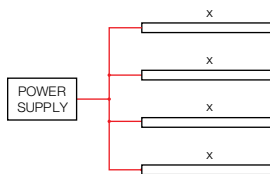
IP RATING

IP40

Protected against solid objects greater than 1mm. No protection against liquids.

■ INSTALLATION LIMITS

SCENARIO 1



MAX. CONTINUOUS CONNECTION LENGTH (X) CONNECTOR TYPE

2,909 mm With standard 2+1 bare wires (WR2.10S)

- Please consult Coolon for details on extension cable between LED fittings, drivers and power supplies.

⚠ WARNING

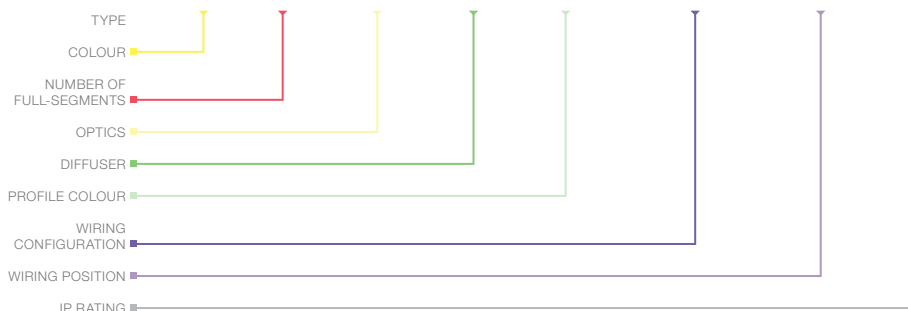
Avoid connecting multiple power supplies into a single circuit, unless they are specifically designed to do so.

✘

✘

ORDERING EXAMPLE

LNR - ARIS C - BL - S2 - O209 - SC - BLK - WR2.1OS - WB - IP40



■ **COLOUR** PAGE 04

BL	Blue
GR	Green
RD	Red
AM	Amber

■ **PRODUCT LENGTH** PAGE 06

S1	269mm
S2	509mm
S3	749mm
S4	989mm
S5	1,229mm
S6	1,469mm
S7	1,709mm
S8	1,949mm
S9	2,189mm
S10	2,429mm
S11	2,669mm
S12	2,909mm

■ **OPTICS** PAGE 06

L07	14° Beam
L25	50° Beam
F5010	Flare 100° x 20° Beam
O209	Oval 40° x 18° Beam

■ **DIFFUSER** PAGE 07

SC	Standard Clear
----	----------------

■ **PROFILE COLOUR** PAGE 07

BLK	Black (Standard)
WHT	White
CST	Custom Colour ¹

■ **WIRING CONFIGURATION** PAGE 08

WR2.1OS	Wire 2+1 Core One Side
OC2.2MO	Outdoor Connector 2.2pin Male Only
SMPLC.1	Sample Type Connector 2.5mm

■ **WIRING POSITION** PAGE 08

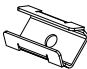
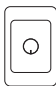


WB	Wire from Back
WS	Wire from Side

■ **IP RATING** PAGE 08

IP40	Indoor Use
------	------------

¹ Custom colours available on request.

■ ACCESSORIES

	PRODUCT CODE	DESCRIPTION
MOUNTING *		
	MC-CCLIP	Stainless Steel C-Clip
	MBR-P25R-BLK	Rotating Mounting Bracket for Aris - Black
	MBR-P25R-WHT	Rotating Mounting Bracket for Aris - White
* Recommended spacing between Mounting Brackets is maximum 500mm and Mounting Clips is maximum 300mm.		
CONTROLLER		
	CTR-A2PWM 0-10V	Analogue to PWM converter for 0 – 10V dimming signal
	CTR-DIMMERLOGIC	Coolon Universal Wall Dimmer with 0 – 10V and PWM Logic Output
	CTR-DALI-LOGIC	Indoor DALI Point 1 channel Driver with PWM Logic Output
	CTR-DALILOGIC-IP	Outdoor DALI Point 1 channel Driver with PWM Logic Output
POWER SUPPLY FOR OUTDOOR USE (IP67)		
	PWR-HLG-60H-24AU	Mean Well Power Supply HLG 60W 24V IP67
	PWR-HLG-150H-24AU	Mean Well Power Supply HLG 150W 24V IP67
	PWR-HLG-240H-24AU	Mean Well Power Supply HLG 240W 24V IP67
	PWR-HLG-320H-24AU	Mean Well Power Supply HLG 320W 24V IP67
CABLE EXTENSIONS		
	CBLEXT-LNR-WR2.1-IP65-3M	3m Length, 3 Core RBW 16AWG Cable Extension with outdoor joiner
	CBLEXT-LNR-WR2.1-IP65-5M	5m Length, 3 Core RBW 16AWG Cable Extension with outdoor joiner
	CBLEXT-LNR-WR2.1-IP65-10M	10m Length, 3 Core RBW 16AWG Cable Extension with outdoor joiner
	CBLEXT-LNR-WR2.1-IP65-20M	20m Length, 3 Core RBW 16AWG Cable Extension with outdoor joiner