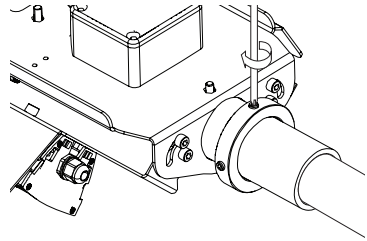
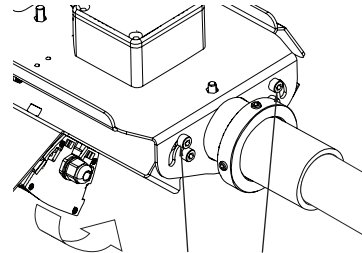


Step 5 Tighten the nuts on the mounting bracket to secure the luminaire to the spigot.



Step 6 Unscrew nut and adjust the angle of the fitting and screw the nut to secure in position.

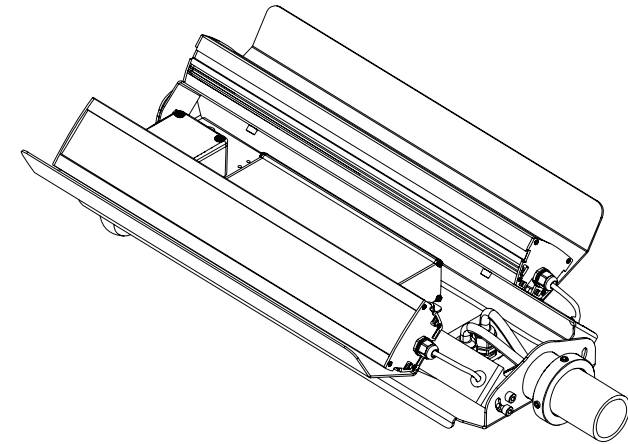
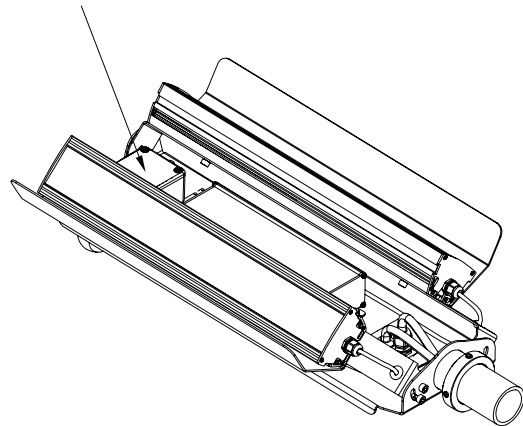


Angle adjustment nut

In high vibration areas, please use Loctite® 243™ retaining compound (not included) to secure.

WARNING

Do not open this junction box. This junction box is factory sealed. Opening it will void the warranty.



RETROLED INDUSTRIAL LED LUMINAIRE

Installation Instructions



RETROLED Technical Specifications

Luminaire

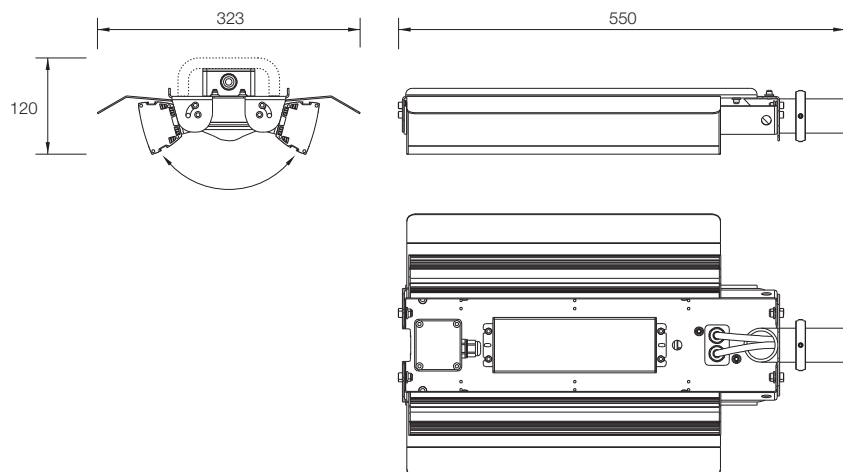
Luminous Flux 3500 - 5500 lm
Power Consumption 80W Max

Power Supply (Built In) Mean Well 24VDC 100W
Operating Voltage Range 90-295VAC, 127-417VDC
Frequency Range 47-63Hz
Leakage Current <0.75mA/240VAC
Current Consumption 0.45A/230VAC
IP Rating IP66
Power Factor >0.95
Body Steel (Zinc Plated and E-Coated)
Weight 6.5kg

Light Module

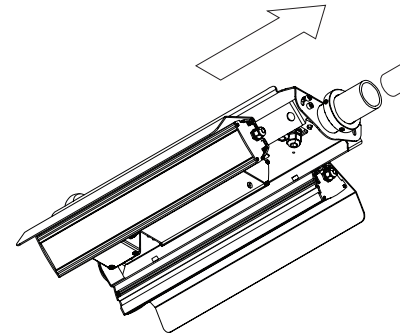
Max. Operating Voltage 26V
Min. Operating Voltage 23V
Body Aluminium Alloy* (Marine Grade Black Anodized)
*Composition available on request

Package Dimensions 568x225x160mm
Package Weight 7.2kg

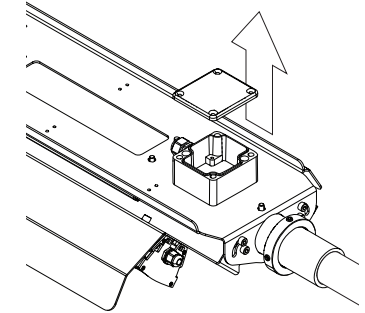


Installation Instructions

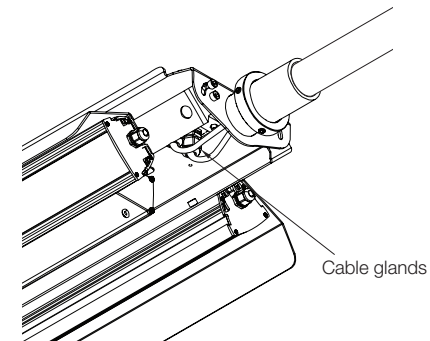
Step 1 Slide the RetroLED onto the spigot until reaches the stopper bolt.



Step 2 Open up the top junction box.



Step 3 Feed the wires from the spigot through the cable glands and wire the connections.



Step 4 Close and secure the junction box and then tighten the cable glands.

