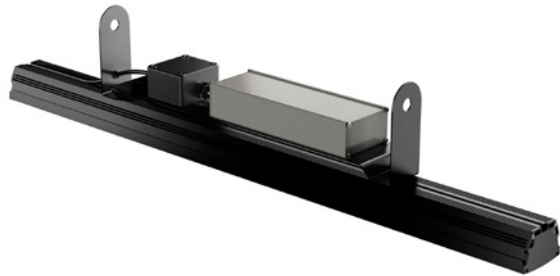
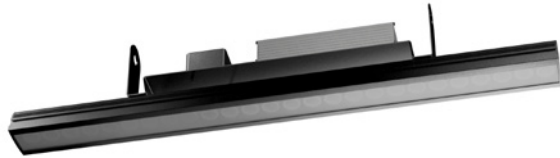


LOW BAY INDUSTRIAL LED LUMINAIRE

APPLICATIONS

- Low Bay
- Troffer Replacement



The Low Bay Industrial LED Luminaire is a long-life, powerful, and energy efficient alternative to fluorescent and some metal halide low bay light fixtures. It is designed for use in factories, warehouses, mines and other industrial environments.

This luminaire is produced in an easy-to-install, simple, compact and robust format that doesn't require special wiring or ballast. Designed with energy savings in mind, the luminaire also provides natural white light and high colour rendering - all the traits necessary for good visibility. With no warm up time needed, facility managers can be assured of the comfort and safety of their tenants wherever these luminaires may be used.

Coolon's range of industrial LED lighting products come with 3 Years Manufacturer's Warranty.

TECHNICAL SPECIFICATIONS

Luminaire

Luminous Flux	1926 lm (Single Clear) 3211 lm (Double Clear) 1744 lm (Single Diffused) 2908 lm (Double Diffused)
Power Consumption (including power supply)	42.2W Typ. 46.4W Start (Single) 65.5W Typ. 76.7W Start (Double)
Power Supply (Built In)	Meanwell 24VDC 100W
Operating Voltage Range	90-295VAC, 127-417VDC
Frequency Range	47-63Hz
Leakage Current	<0.75mA/240VAC
Current Consumption	0.208A Max (Single) 0.304A Max (Double)
IP Rating	IP66
Power Factor	0.843 (Single) 0.896 (Double)
Weight	3.2kg (Single) 4.0kg (Double)

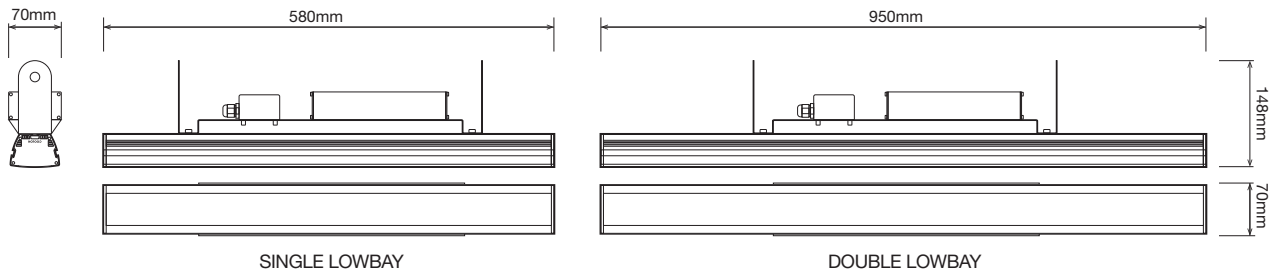
Light Module

Max. Operating Voltage	26V
Min. Operating Voltage	23V
Body	Aluminium Alloy* (Marine Grade Black Anodised)

*Composition available on request



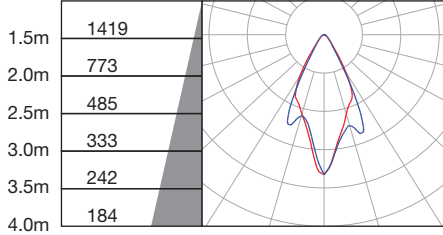
DIMENSIONS



ILLUMINANCE AT DISTANCE

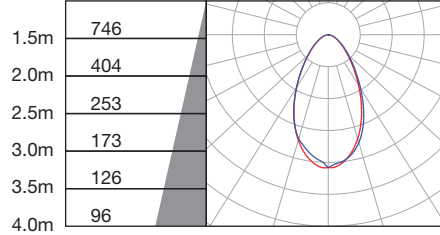
LB3-C-L30-ST

Ec at
Centre (Lux)



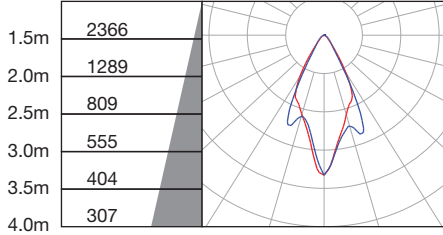
LB3-D-L30-ST

Ec at
Centre (Lux)



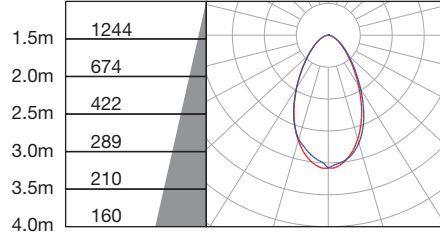
LB5-C-L30-ST

Ec at
Centre (Lux)



LB5-D-L30-ST

Ec at
Centre (Lux)



ORDERING INFORMATION

ORDERING EXAMPLE

LB3 - D¹ - L30 - ST¹

PRODUCT CODE OPTIONS OPTICS TYPE

PRODUCT CODE

LB3 Single Low Bay 580mm
LB5 Double Low Bay 950mm

OPTIONS

D Diffused Cover
C Clear Cover

OPTICS

L30 Internal Lens 30° Beam Angle

TYPE

ST Standard Configuration, Mains Power via Junction Box
LV Low Voltage Configuration, 24VDC

¹ If not specified, diffused cover and standard configuration will be supplied