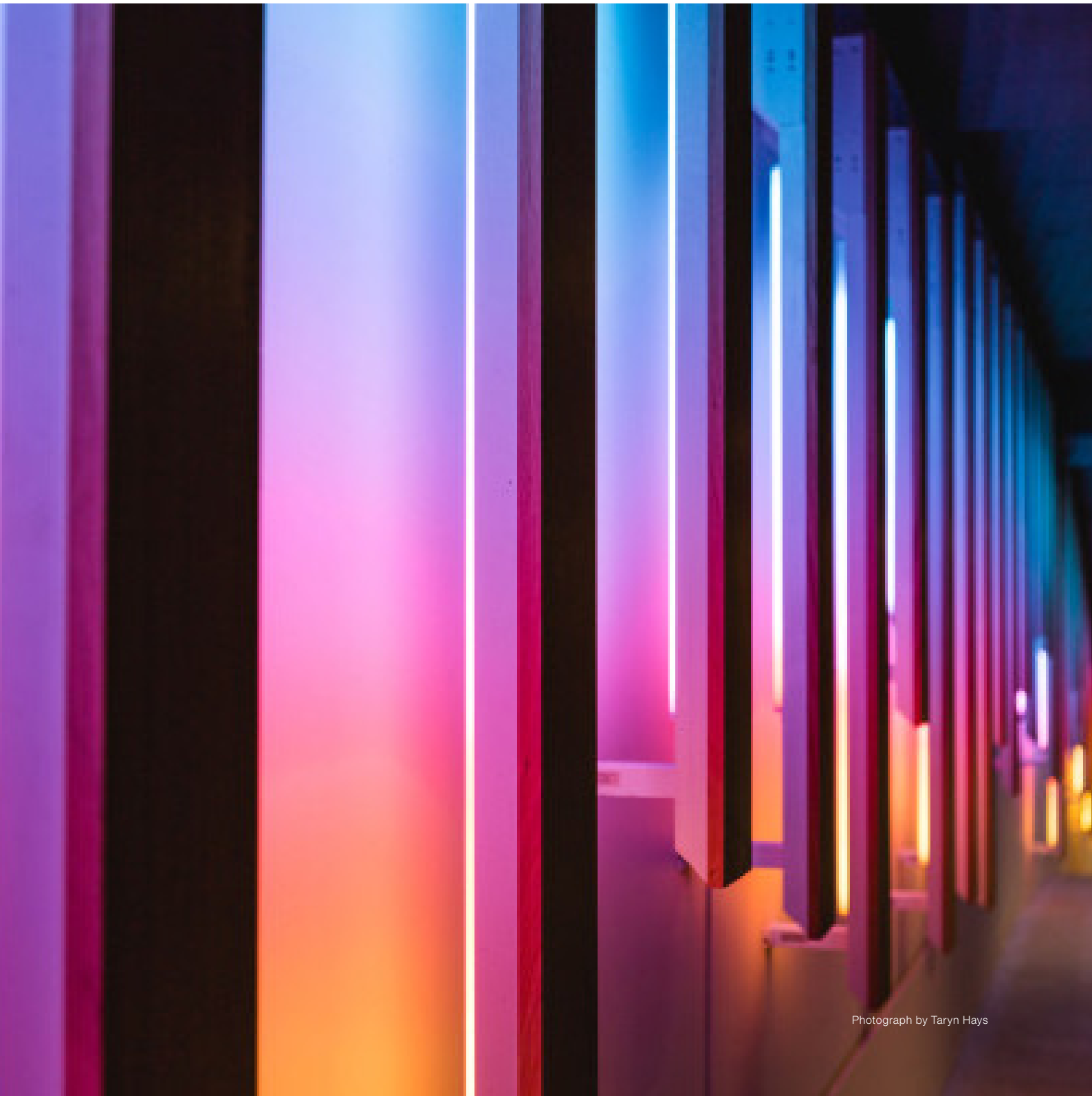
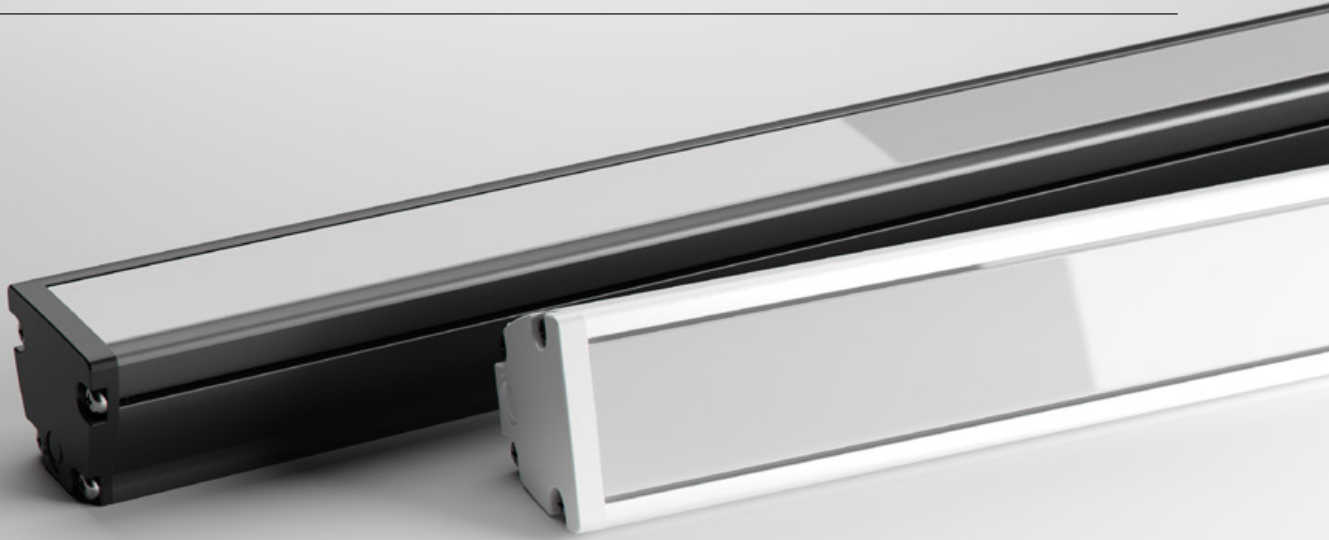




# MAX MINI PIXEL

LINEAR MEDIUM POWER LNR-MAX MINI PIXEL





The Max Mini Pixel is a compact and versatile Architectural luminaire with a 36.5x30mm profile and various lineal lengths. The profile is fitted with a Uniform Glow diffuser, so no LEDs are visible along the length making it perfect for visible applications.

The Max Mini Pixel also offers great design flexibility as it is controlled with standard 3 channel DMX controller yet capable of producing highly pure whites from its RGBW light source.

**POWER****20W**

19.2W / metre

**LUMINOUS FLUX****RGBW** · Varies with colour**RGBW FULL COLOUR**

## COMPACT SIZE

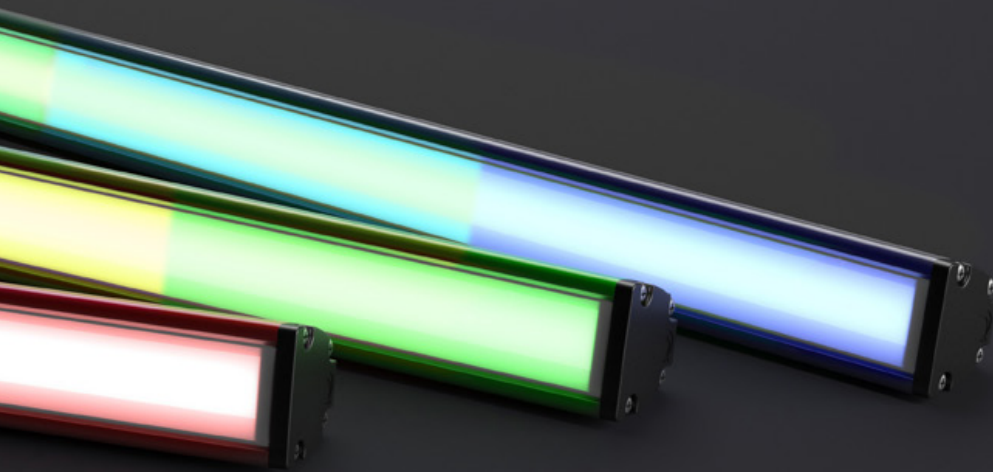
Reduced profile dimensions allows for ease of installation in confined spaces that could not be achieved with previous halogen counterparts. Installed in visible sight the Max Mini RGBW-PXL also pays respect to the interior design with minimal disruption to the aesthetics.



## CUSTOMISATION AT ITS BEST

The Max Mini Pixel is a highly versatile and customisable luminaire.

Pick from a number of linear lengths, LED colours, profile colours and mounting options.



### LONG OPERATING LIFE

Coolon products use world's most reputable LED manufacturers and the latest available standard to adequately report luminaire lumen maintenance.

We strive to drive LEDs under their nominal current and use state of the art heat dissipation methods, leading to durable electronics.



### VARIOUS CCT & COLOUR BINNING CONSISTENCY

Product is offered in various Colour Temperatures using tighter bins.



### 5 YEARS WARRANTY

Coolon Luminaires are covered by a solid comprehensible manufacturer's warranty that covers a range of possible defects and performance parameters throughout the duration of the warranty period.



### PROUDLY MADE IN AUSTRALIA

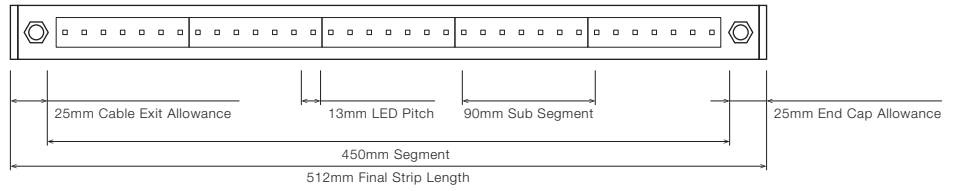
Our products are designed and manufactured in Australia. Engineered to perfection, using only the highest quality components and highly skilled labour, each luminaire is assembled and thoroughly tested to ensure that it exceeds the highest standards.

## ■ TECHNICAL SPECIFICATIONS

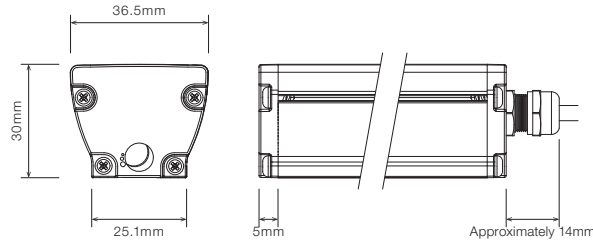
Product Code	LNR-MAX MINI PIXEL
Description	Max Mini Pixel RGBW Linear Medium Power Projector
Body	Aluminium Alloy Body
Finish	Powder Coated Black (Standard), Various Colours Available
Cover	Polycarbonate for Indoor application Polyurethane translucent for Outdoor applications
End Caps	Polycarbonate
Segment Length (S)	450mm
Sub-Segment Length (Pixel)	90mm
Number of Sub-Segments	5
LED Pitch	13mm
LEDs Per Sub Segment	7
Operating Voltage	24VDC
Max. Power Consumption	19.2W per Metre
LED	CREE CLQ6A-TKW RGBW, White Chip CRI 80+
Dimming / Control	Through CTR-RDM-PIXEL-IPQC (sold separately), 3 DMX (Full Frames) Channels per pixel
External Heatsink Required	No
Ambient Operating Temp	Ta -10°C to 40°C
Thermal Protection	Yes
Average Lumen Maintenance @Ta 25°C	70% @ 50,000 Hours
IP Rating	IP40 (Standard), up to IP65 (10% Lumen depreciation on IP65 products)
Max Continuous Connection Length	Please refer to installation limitations

■ DIMENSIONS

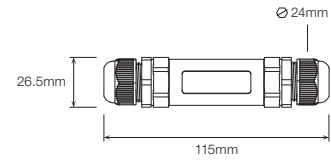
For final strip lengths please refer to the "Product Length" table.



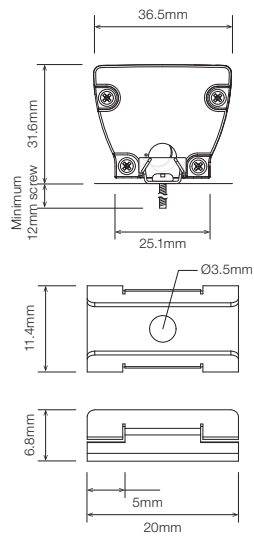
STANDARD PROFILE



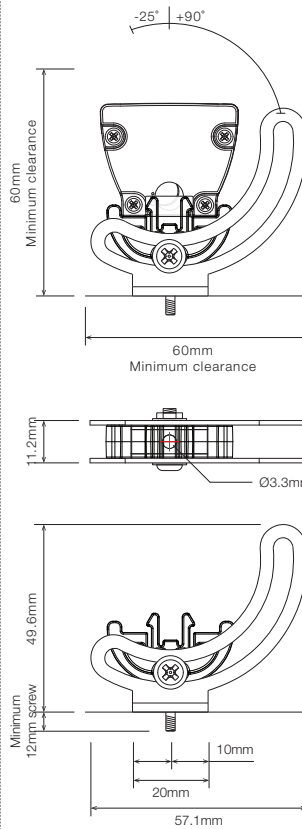
CABLE EXTENSION JOINER



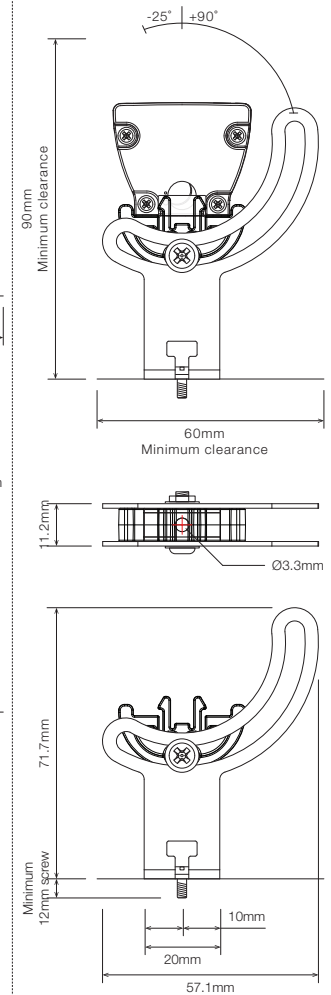
STAINLESS STEEL C-CLIP <sup>1</sup>



ROTATING MOUNTING BRACKET <sup>1</sup>



ELEVATED ROTATING MOUNTING BRACKET <sup>1 2</sup>



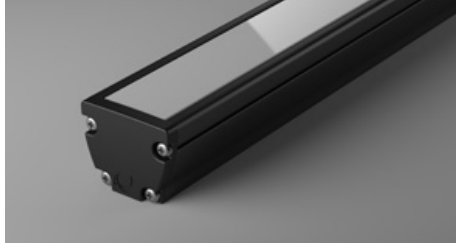
<sup>1</sup> Recommended spacing between Mounting Brackets is maximum 500mm and Mounting Clips is maximum 300mm.  
<sup>2</sup> Elevated rotating bracket is the only suitable option when wire from back is required.

■ PRODUCT LENGTH

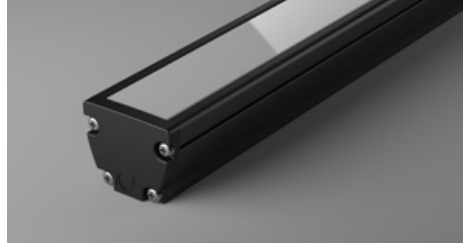
FULL SEGMENTS	SUB SEGMENTS	EXACT STRIP LENGTH	FINAL LENGTH
S0	A1	90mm	152mm
S0	A2	180mm	242mm
S0	A3	270mm	332mm
S0	A4	360mm	422mm
S1	A0	450mm	512mm
S1	A1	540mm	602mm
S1	A2	630mm	692mm
S1	A3	720mm	782mm
S1	A4	810mm	872mm
S2	A0	900mm	962mm
S2	A1	990mm	1,052mm
S2	A2	1,080mm	1,142mm
S2	A3	1,170mm	1,232mm
S2	A4	1,260mm	1,322mm
S3	A0	1,350mm	1,412mm
S3	A1	1,440mm	1,502mm
S3	A2	1,530mm	1,592mm
S3	A3	1,620mm	1,682mm
S3	A4	1,710mm	1,772mm
S4	A0	1,800mm	1,862mm
S4	A1	1,890mm	1,952mm
S4	A2	1,980mm	2,042mm
S4	A3	2,070mm	2,132mm
S4	A4	2,160mm	2,222mm
S5	A0	2,250mm	2,312mm
S5	A1	2,340mm	2,402mm
S5	A2	2,430mm	2,492mm
S5	A3	2,520mm	2,582mm
S5	A4	2,610mm	2,672mm
S6	A0	2,700mm	2,762mm
S6	A1	2,790mm	2,852mm
S6	A2	2,880mm	2,942mm

■ DIFFUSER

**PT** · Polyurethane Translucent - Uniform Glow <sup>1</sup>

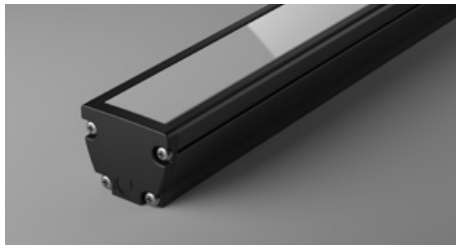


**SD** · Standard Diffuser - Uniform Glow <sup>2</sup>

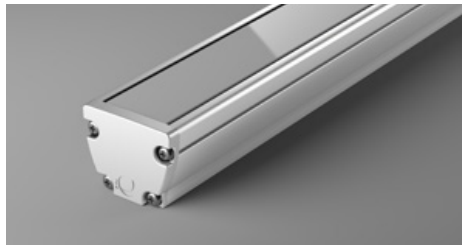


■ PROFILE COLOUR

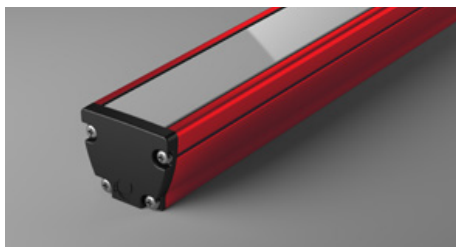
**BLK** · Black



**WHT** · White



**CST** · Custom Colour <sup>3</sup>



<sup>1</sup> Polyurethane Translucent applicable to IP65 only

<sup>2</sup> Standard Diffuser applicable to IP40 only

<sup>3</sup> Custom colours available on request

WIRING CONFIGURATION

CONNECTOR TYPE	DRAWING	MALE	FEMALE
OC4MO Outdoor Connector 4 pin Male Only			
OC4MF Outdoor Connector 4 pin Male + Female			

- Wiring length 300mm with cable's outer diameter 5.8mm
- Supplied with mating connector and 300mm cable
- Please consult Coolon for details on extension cables between LED fittings, drivers and PSUs.

WIRING COLOUR CODE	
Red	+ VDC
Black	- VDC
Blue	+ DATA
White	- DATA

WIRING POSITION

WB - Wire from back



Ideal for fittings installed back-to-back or limited spaces.

WS - Wire from Side



Ideal for fittings installed individually or vertically.

IP RATING

**IP40**

Protected against solid objects greater than 1mm. No protection against liquids.

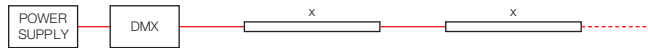
**IP65**

Fully protected against dust. Protected against water jets from all directions.

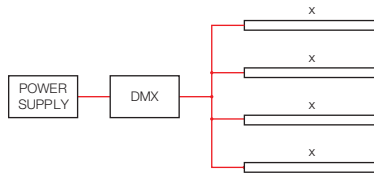


■ INSTALLATION LIMITS

SCENARIO 1



SCENARIO 2



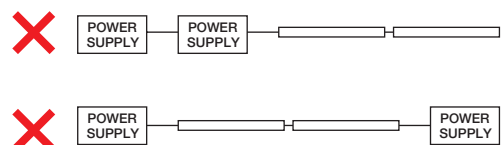
**MAX. CONTINUOUS CONNECTION LENGTH (X) CONNECTOR TYPE**

5,000 mm With standard outdoor 6 pin connectors (OC6MO)

- Please consult Coolon for details on extension cable between LED fittings, drivers and power supplies.
- Maximum distance between DMX controller and fitting is 600mm.
- Maximum distance between daisy-chained luminaires is 600mm.

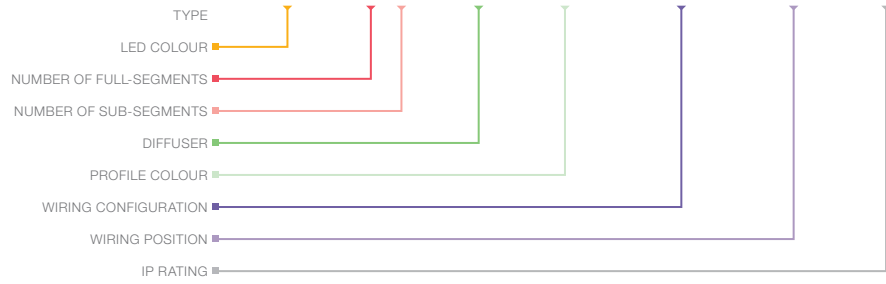
**⚠ WARNING**

Avoid connecting multiple power supplies into a single circuit, unless they are specifically designed to do so.



ORDERING EXAMPLE

**LNR - MAX MINI PIXEL - WW - S2A0 - PT - BLK - OC4MO - WB - IP40**



LED COLOUR

WW	RGB + Warm White
CW	RGB + Cool White

DIFFUSER PAGE 07

PT	Polyurethane Translucent - Uniform Glow <sup>1</sup>
SD	Standard Diffuser - Uniform Glow <sup>2</sup>

PRODUCT LENGTH PAGE 06

FULL SEGMENTS	SUB SEGMENTS
S1	A0
S2	A1
S3	A2
S4	A3
S5	A4
S6	

PROFILE COLOUR PAGE 07

BLK	Black (Standard)
WHT	White
CST	Custom Colour <sup>3</sup>

WIRING CONFIGURATION PAGE 08

OC4MO	Outdoor Connector 4 pin Male Only
OC4MF	Outdoor Connector 4 pin Male + Female

WIRING POSITION PAGE 08

WB	Wire from Back
WS	Wire from Side

IP RATING PAGE 08


IP40	Indoor Use
IP65	Outdoor Use

<sup>1</sup> Polyurethane Translucent applicable to IP65 only


<sup>2</sup> Standard Diffuser applicable to IP40 only


<sup>3</sup> Custom colours available on request

## ■ ACCESSORIES

	PRODUCT CODE	DESCRIPTION
<b>MOUNTING <sup>1</sup></b>		
	MC-CCLIP	Stainless Steel C-Clip
	MBR-PMAX-BLK	Rotating Mounting Bracket for Max Mini - Black
	MBR-PMAX-WHT	Rotating Mounting Bracket for Max Mini - White
	MBR-PMAX-E-BLK	Elevated Rotating Mounting Bracket for Max Mini - Black
	MBR-PMAX-E-WHT	Elevated Rotating Mounting Bracket for Max Mini - White

<sup>1</sup> Recommended spacing between Mounting Brackets is maximum 500mm and Mounting Clips is maximum 300mm.

	PRODUCT CODE	DESCRIPTION
<b>DRIVER</b>		
	CTR-RDM PIXEL-IPQC	Outdoor DMX self addressing LED controller + Quick Connect

	PRODUCT CODE	DESCRIPTION
<b>POWER SUPPLY</b>		
	PWR-HLG-40H-24	Mean Well Power Supply HLG 40W 24V
	PWR-HLG-60H-24	Mean Well Power Supply HLG 60W 24V
	PWR-HLG-100H-24	Mean Well Power Supply HLG 100W 24V
	PWR-HLG-150H-24	Mean Well Power Supply HLG 150W 24V
	PWR-HLG-240H-24	Mean Well Power Supply HLG 240W 24V