

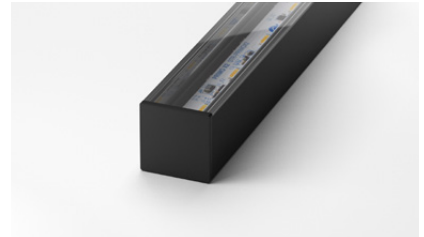
EXTRUSION PROFILE



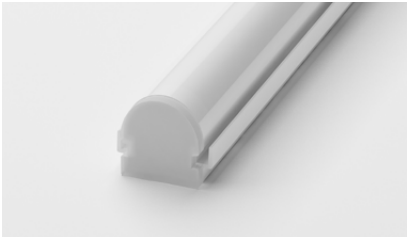
Standard Clear (SC)



Low Profile Clear (LC)



Black P17 Clear* (P17C)



Standard Diffused (SD)



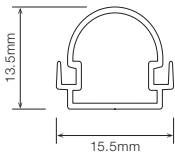
Low Profile Diffused (LD)



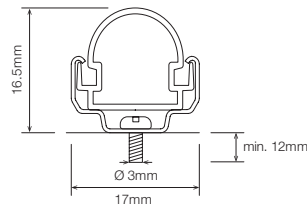
Black P17 Diffused* (P17D)
*Custom colours available on request

DIMENSIONS

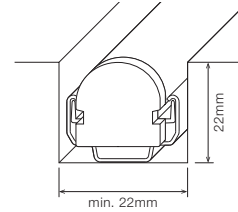
Standard Profile



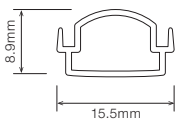
Standard Profile with Mounting Clip



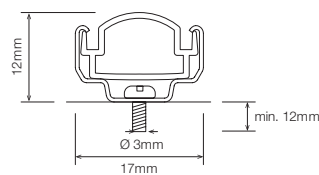
Standard Profile Recommended Rebate



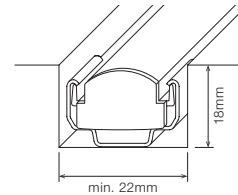
Low Profile



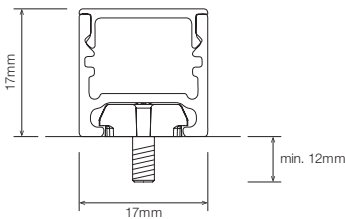
Low Profile with Mounting Clip



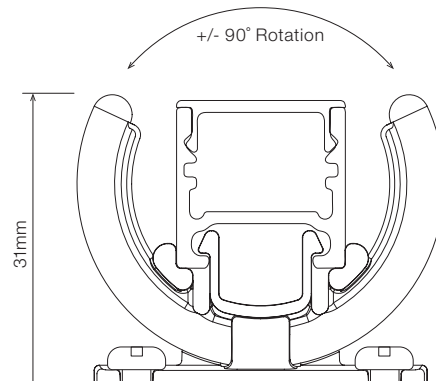
Low Profile Recommended Rebate



P17 Profile* with Mounting X-Clip



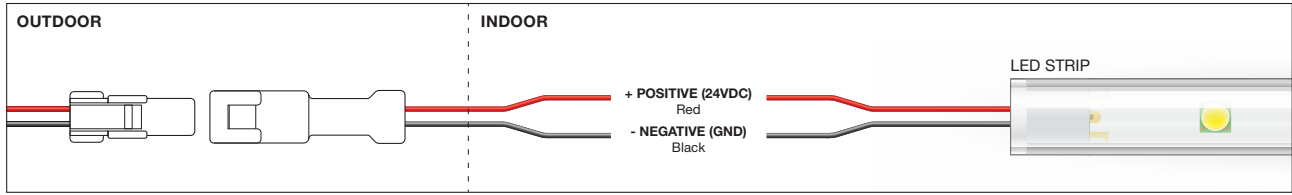
P17 Profile* with Rotating Clip



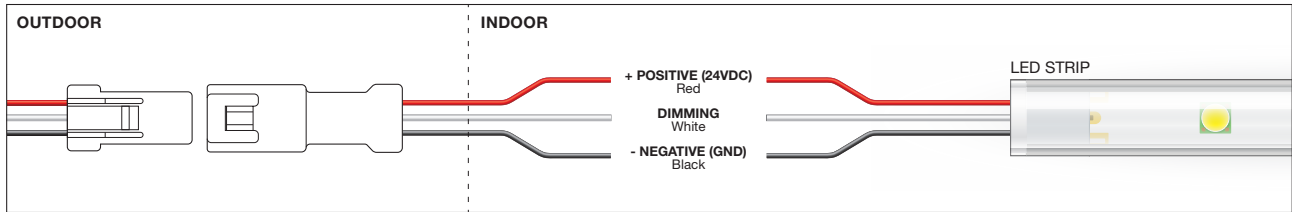
* P17 Profile available in IP44 only

WIRING

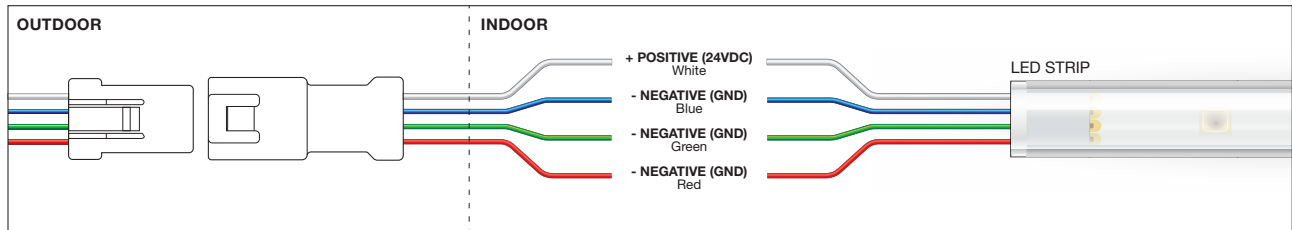
For Product: Duco, Edge, Slim, Multo, Multo X2



For Product: Aduro, Aduro X2, Primo, Primo X2, Slim



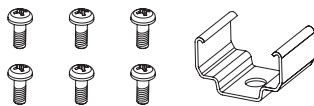
For Product: Edge RGB, Spectrum 450



INSTALLATION INSTRUCTIONS

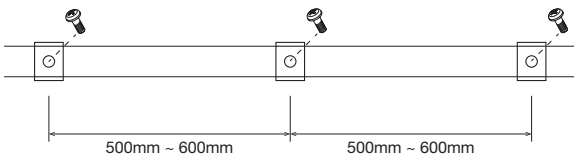
Step 1

Prepare mounting clip and screws (Ø3mm with minimum 12mm long)



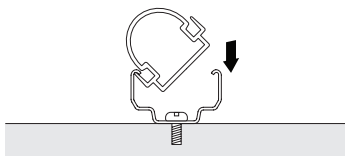
Step 2

Secure mounting clips with screws on timber or metal surface ensuring that mounting clips are straight with spacings of 500mm - 600mm.



Step 3

Tilt LED strip on one edge and secure the other edge by latching LED strip to mounting clips.



Step 4

Connect the wires to LED Strips or Power Supply

