 COOLON

# ORBIT

LED DRIVING LIGHTS

**CP12**

LIMITED EDITION



# WHAT DO THEY ALL HAVE IN COMMON?



# CP12

## LED LUMINAIRE

The CP12 Range is designed for the harshest environments and provides unrivalled reliability and performance, critical for demanding applications.

- Resistant to Vibration
- Impact/Shock Proof
- Chemical Resistant
- High Pressure Washable
- Unaffected by Severe Temperature Variations





# INDUSTRIAL FITTINGS, EVERYDAY USE

The CP12 Range is a true representation of modern lighting evolution.

Just when everybody thought that the boundaries of LED lighting technology could not be pushed any further, CP12 has set the new benchmark of worklight performance.

More light means greater visibility, with greater area coverage and longer distance than any other industrial worklight in the category.



# SEE

CP12 Orbit is fitted with the latest in LED technology, producing a punchy light beam over a great range.



ON  
LIG

TWO M

OFF ROAD



NE  
GHT  
MODES

ON ROAD



## BE SEEN

Uniquely featuring Daytime Running Lights to increase the visibility of your car to oncoming traffic.





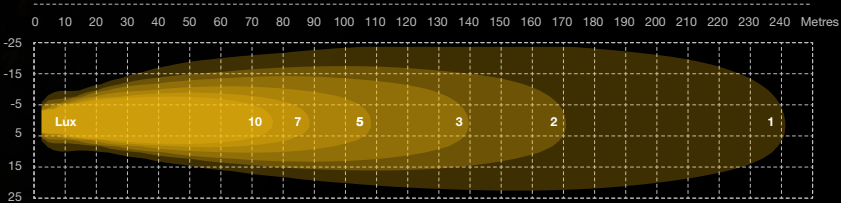
## PERFORMANCE

CP12 Orbit is available in 2 types of optics, wide and narrow. Their combination allows for a great flexibility in achieving the desired light pattern.

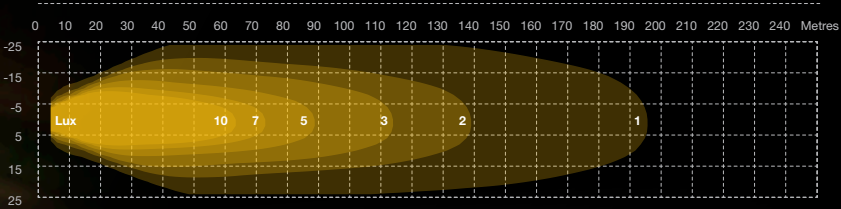


# CONFIGURATION

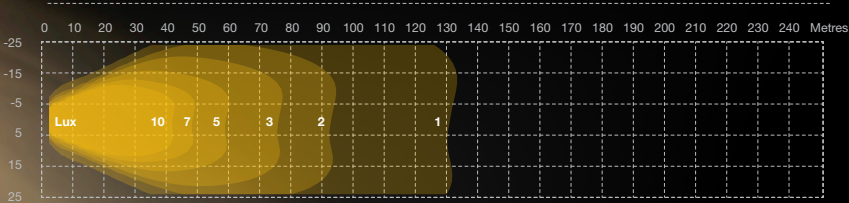
Orbit 2 x L10



Orbit 1 x Oval and 1 x L10



Orbit 2 x Oval



## TECHNICAL SPECIFICATIONS

### Product

Model	CP12-50
-------	---------

### Optical Characteristics

Luminous Flux (Photometered)	3200lm ~ 3500lm
Luminous Flux (LED Lumens)	6400lm
CCT	5500K ~ 6900K
CRI	>70

### Electrical Characteristics (Luminaire)

Power	48 ~ 64W (Beam) 2.3W (Ring)
Nominal Voltage	12VDC
Voltage Range	10 ~ 17V
Cable Type	UL2464, 16 AWG x 3C PVC, UV Resistant
Cable Diameter	7.5mm
Cable Length	250mm

### Environmental

IP Rating	IP66
Impact Rating	IK09
Salt Spray Tested	Yes
Operating Temp. Range	-30 ~ +50°C
Thermal Management Type	Active/Continuous
Expected Lifespan	50,000 Hours to 70% Brightness
Material Composition (Body)	LM6 Aluminium Alloy (<0.1% copper content)
Material Composition (Diffuser)	High Impact/Shock Proof - Grilamid TR
Material Composition (Bracket)	Stainless Steel
Mounting/Bracket Type	Standard
Angle Adjustment	Free aiming range -30° ~ +30°

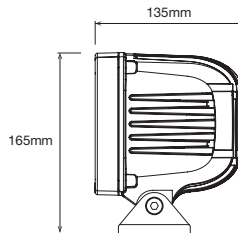
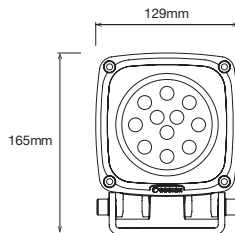
### Weight/Packaging

Luminaire Weight	2.1kg
Bracket Weight	0.4kg (FMB)
Packaging Dimensions (CP12)	140 x 175 x 160mm
Packaging Weight (CP12)	2.7kg

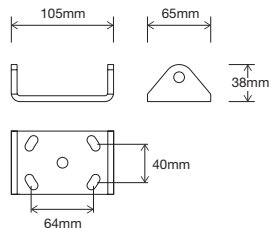
### Warranty

Warranty	3 Years
----------	---------

## DIMENSIONS



Standard Bracket  
MBR-CP9-STB



## ORDERING EXAMPLE

**CP12 - 50 - CWTWWR - L10 - FMB**

PRODUCT

TYPE

COLOUR TEMP

OPTICS

MOUNTING

PRODUCT		TYPE	COLOUR TEMP		OPTICS		MOUNTING	
CP12	50	Power 50W	CWTWWR	Cool White Beam, Warm White Ring	L10	Beam 10	FMB	Flat Mounting Bracket

LOVAL Oval

**PHONE**

1300 287 533  
+613 8681 3633

**WEBSITE**

[www.coolon.com.au](http://www.coolon.com.au)

**EMAIL**

[support@coolon.com.au](mailto:support@coolon.com.au)



SCAN QR CODE OR VISIT <http://www.coolon.com.au/orbit-video> FOR VIDEO