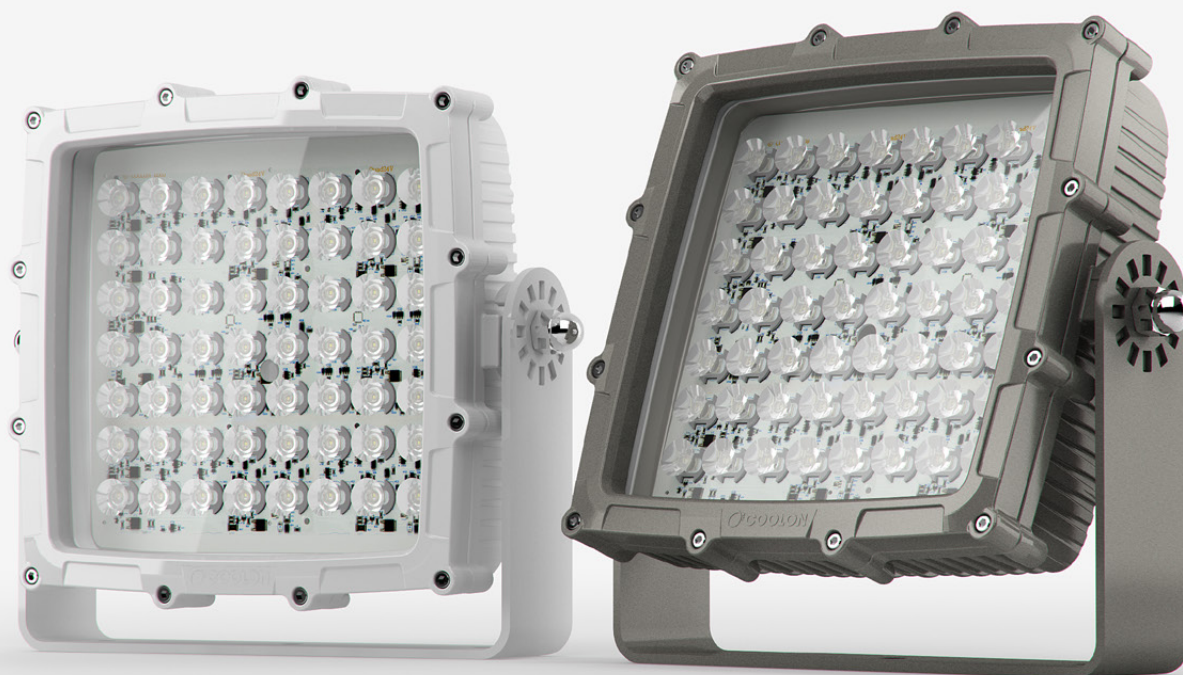




BLOCK 56

Flood Light





The Block 56 LED Light optimises the latest from Coolon's LED lighting technology to deliver the most powerful and robust flood light for heavy industrial applications.

Designed and manufactured in Australia using only the highest quality components, the Block 56 LED luminaire is designed specifically for industrial applications where reliability and performance are paramount.

Every component of the Block 56 LED luminaire has been carefully engineered to provide the most reliable performance and bring across many benefits of utilizing solid state lighting technology in industrial applications.

Block 56 LED luminaire is rated IP66 and is suitable for both indoor and outdoor use.

The wide range of available optics allows it to be well-adopted for almost any application.

LUMINOUS FLUX

19500 lm ~ 24600 lm

18000 20000 22000 24000 26000

POWER

180W / 240W / 300W

180 210 240 270 300

COLOUR TEMPERATURE

2700K ~ 6700K

2700 6700



POWER & SIZE

The Block 56 provides unrivaled lumen output for a luminaire of its size.

Measuring only 356mm x 380mm x 120mm the Block 56 outshines and outperforms its rivals.

BUILT TO LAST

The Block 56 is designed for the harshest environments and provides unrivaled reliability and performance, critical for demanding applications.

- Resistant to Vibration
- Impact/Shock Proof
- Chemical Resistant
- High Pressure Washable
- Unaffected by Severe Temperature Variations



L70

LONG USEFUL OPERATING LIFE

Currently available specification from world's most reputable LED manufacturers states 50,000 hours of continuous operation at the rated current within the operating temperature range to 70% residual light output.



VARIOUS CCT & COLOUR BINNING CONSISTENCY

Product is offered in various Colour Temperatures using tighter bins.

3
YEARS

3 YEARS FULL /SOLID WARRANTY

Coolon Luminaires are covered by a solid comprehensive manufacturer's warranty that covers a range of possible defects and performance parameters throughout the duration of the warranty period.



PROUDLY MADE IN AUSTRALIA

Our products are designed and manufactured in Australia. Engineered to perfection, using only the highest quality components and highly skilled labour, each luminaire is assembled and thoroughly tested to ensure that it exceeds the highest standards.

■ TECHNICAL SPECIFICATIONS

Product Code	FLD-BLOCK56
Description	Block 56
Material Composition (Body)	Aluminium Alloy
Body Finish	Anodised Black (Standard), Various Colours Available
Material Composition (Cover)	Tempered Glass (Standard), Polycarbonate (Optional)
Material Composition (Bracket)	Stainless Steel
Luminous Flux (Photometered)	19500 ~ 24600 lm
Luminous Flux (LED Lumens)	35000 lm
Correlated Colour Temperature (CCT)	2700K ~ 6200K
Nominal Voltage	24VDC
Voltage Range	19 - 34VDC
Typical Power Consumption	Selectable 180 W, 240 W, or 300 W
Typical Current	12.5 A
Colour Rendering Index (CRI)	>70
Dimmable	Yes (0-10V)
Effective Beam Angle	Refer to Polar Diagram
External Heatsink Required	Yes
Operating Temperature	Ta 30°C to +50°C
Thermal Operating	Active/Continuous
Average Lumen Maintenance @Ta 25°C	70% @ 50,000 Hours
IP Rating	IP66
Impact Rating	IK09
Cable Type	UL2464, 2Cx16 AWG +1Cx18AWG + Braid PVC, UV Resistant
Cable Diameter	O.D. 7.5mm
Cable Length	2.00M (Standard)
Luminaire Weight	11.6kg
Bracket Weight	3.0kg (FPB) 4.7kg (MPB)
Warranty	3 Years

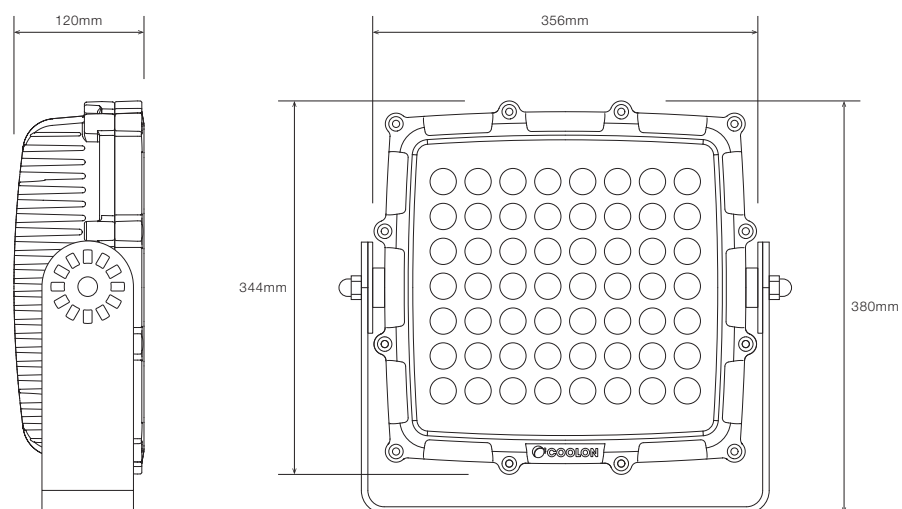
■ IP RATING

IP66

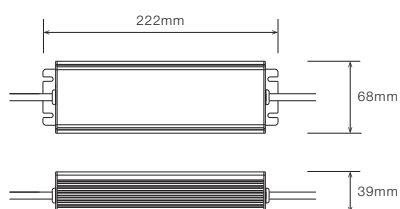
Gel filled and modified to protect against the effects of continuous immersion under pressure

DIMENSIONS

For final strip lengths please refer to the "Full Strip Length Variation Table"

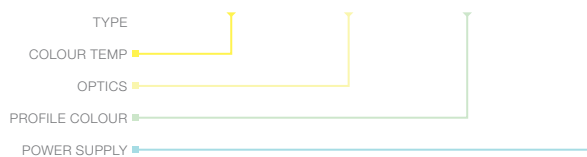


POWER SUPPLY



ORDERING EXAMPLE

FLD - BLOCK56 - 3.0K - L25 - WHT - NPS



COLOUR TEMP

2.7K	2700K
3.0K	3000K
3.8K	3800K
4.0K	4000K
6.2K	6200K

OPTICS

L07	14° Beam
L25	50° Beam
O209	Oval 40° x 18° Beam
NOP	No Optics

PROFILE COLOUR

BLK	Black
WHT	White
CST	Custom

POWER SUPPLY

NPS	No Power Supply
WPS	With Power Supply

■ ACCESSORIES

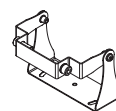
CONTROL



DMC-010-A2PWM
Analogue to PWM converter
for 0-10V dimming signal

CTR-UNI-DIMMER
Outdoor DALI Point 1
channel Driver 10A

MOUNTING BRACKET



FPB
Fixed Plant Bracket

Mobile Plant Bracket
Mobile Plant Bracket

DRIVERS



DRV-DALI-IP1X10A
Outdoor DALI Point 1
channel Driver 10A

POWER SUPPLY FOR OUTDOOR USE (IP67)



PWR-HLG-320-24V
Mean Well Power Supply
HLG 100W 24V IP67