

140W LED. Replacement for
Watchman HID up to 400W.



 **COOLON**

WARDEN LED

140W LED Flood Light

Designed and manufactured in Australia using only the highest quality components, the Warden LED Luminaire is designed specifically for industrial applications where reliability and performance are paramount.

The Warden LED was designed and developed to replace existing halogen/xenon work lights fitted on mining and industrial equipment. The high power LED luminaire provides superior luminous output in a compact size enclosure.

Every component of the Warden LED luminaire has been carefully engineered to provide the most reliable performance and bring across many benefits of utilizing solid state lighting technology in industrial applications.

Warden LED luminaire is rated IP66 and is suitable for both indoor and outdoor use.

The range of optics available allows it to be well-adopted for almost any application.

Designed for use in:

- Area Lighting
- Flood Light
- Retrofit for Watchman Light
- Security Lighting
- Workshop Lighting



Multi-purpose Floodlight for the Harshest Environments

The Warden 140 has been designed to replace traditional Watchman's found in various industrial applications. Warden 140 is a reliable product suited for use in areas where lamp replacement is near impossible or where harsh conditions shorten the life of your traditional HID lamps.

Built to Last

Unlike conventional LED floodlights, the Warden LED was designed to withstand constant abuse.

- Resistant to Vibration
- Impact/Shock Proof
- Chemical Resistant
- High Pressure Washable
- Unaffected by Severe Temperature Variations



COOL SURFACE TEMPERATURE

Coolon's Industrial LED fittings have a much lower surface temperature than traditional HID equivalents which prevents dirt from baking onto the luminaire. This allows for easier cleaning and will prolong the lifespan of the luminaire.



INSTANT ON/OFF

LEDs do not require warm up. Instant on to 100% output translates to no downtime, improved safety and the ability to utilize sensor switching to significantly save energy.



NO FLICKERING

LED luminaires run on constant low voltage DC power and do not produce any visible stroboscopic effects, thus reducing the strain on eyes and significantly improving safety in areas where moving machinery is present.

IP66

HIGH IP RATING - IP66

Coolon's Industrial LEDs are designed specifically to withstand the harsh conditions in mining environments. The robust design allows our LED products to be used in many different applications and are high pressure washable.



UNRESTRICTED BURNING POSITION

Coolon's LED luminaires can be positioned and oriented in any desired way without affecting the lifespan of the product. This gives greater flexibility when it comes to aiming angles and orientation.



EXTRA LOW VOLTAGE OPERATION

Our products operate on extra low voltage DC power. It is substantially safer to work with than conventional mains powered light sources.

3
YEARS

3 YEARS FACTORY WARRANTY

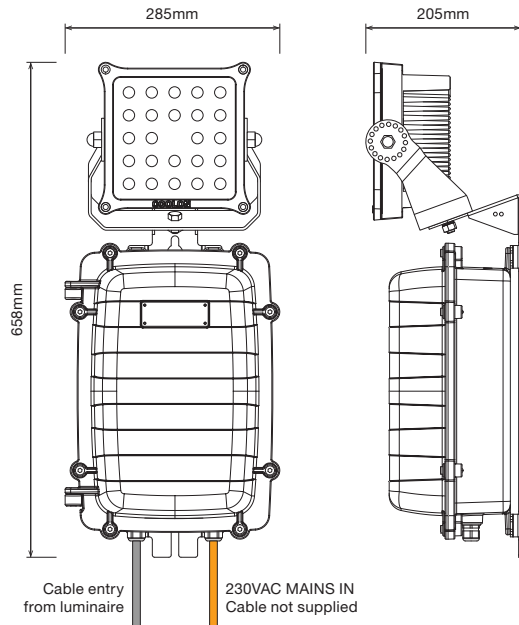
Coolon Luminaires are covered by a solid comprehensible manufacturer's warranty that covers a range of possible defects and performance parameters throughout the duration of the warranty period.



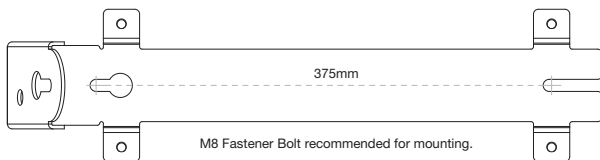
PROUDLY MADE IN AUSTRALIA

Engineered to perfection, using only the highest quality components and highly skilled labour, each luminaire is assembled and thoroughly tested to ensure that it exceeds the highest standards.

DIMENSIONS



MOUNTING BRACKET (INCLUDED)



TECHNICAL SPECIFICATIONS

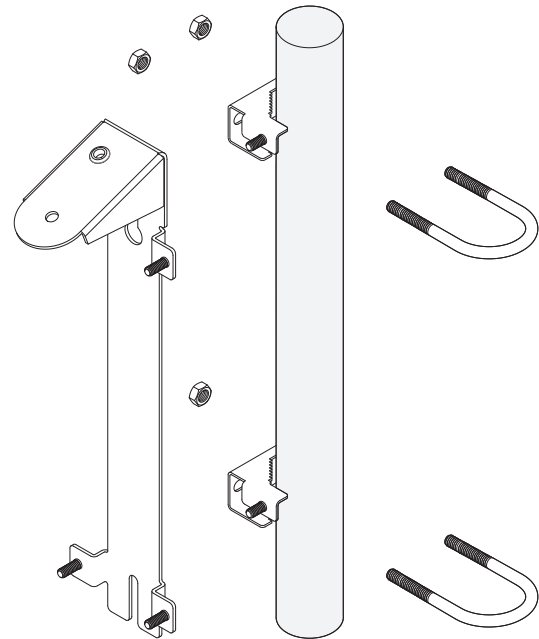
Make/Model	WARDEN LED Flood Light
Model	WDN-140
Optical Characteristics	
Luminous Flux (Photometered)	12,931 – 18,053 lm
CCT	CWT / WWT
CRI	> 70
Electrical Characteristics (Luminaire & Power Supply)	
Model Part Number	PWR-CLN-150-42-036AL
Power Consumption	~139.5W @ 230VAC 145W Start Up
Nominal Voltage	230VAC
Voltage Range	100 – 277VAC / 127 – 350VDC
Frequency Range	47 – 63Hz
Power Factor	>0.95 / 230VAC
AC Current	~1.36A / 115VAC ~0.70A / 230VAC ~0.60A / 277VAC
Leakage Current	<0.75mA / 277VAC
Withstand Voltage	I/P-O/P:3.75KVAC I/P-FG:2KVAC O/P-FG:1.5KVAC
Isolation Resistance	I/P-O/P, I/P-FG, O/P-FG:100M Ohms / 500VDC / 25°C / 70% RH
Cable Gland Diameter	M20
Cable Gland Opening	7 – 13mm

¹ Optical and electrical characteristics are measured using Cool White LEDs (CWT)

² Reading taken while test unit operating in steady state. Ambient temperature during testing is typically 25°C. Individual unit behaviour may differ due to electronic component tolerance and ambient conditions. Product parameters and application suitability shall be checked by the user prior to commissioning.

³ Sold separately as an optional extra.

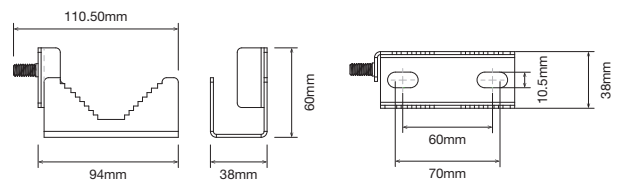
EASY POLE INSTALLATION (USING U-BOLT MOUNTING KIT³)



U-BOLT MOUNTING KIT³ (OPTIONAL EXTRA)

Optional U-Bolt Pole Mounting Kit x 2 ACC-PMB-XXXX-BOLT-SS

Available to fit DN40 or DN50 pipe. Please refer to industrial accessories brochure for more details. visit coolon.com.au to download



Environmental

IP Rating	IP66
Impact Rating	IK09
Expected Lifespan	50,000 Hours to 70% Brightness
Operating Temp. Range	-20 to +50°C
Material Composition (Body)	Aluminium Alloy (Anodised and E-Coated)
Material Composition (Bracket)	Stainless Steel 304
Material Composition (Optics)	PC
Material Composition (Cover)	Tempered Glass
Mounting/Bracket Type	Wall / Surface Mount

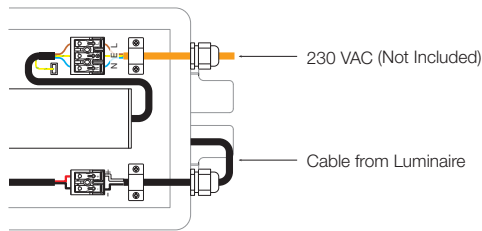
Weight/Packaging

Unit Weight	10.5kg
Packaging Dimensions	460 x 450 x 260mm
Packaged Weight	12.4kg

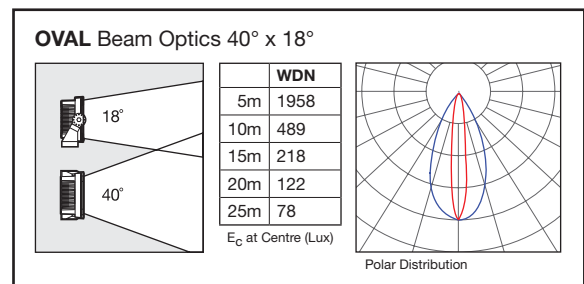
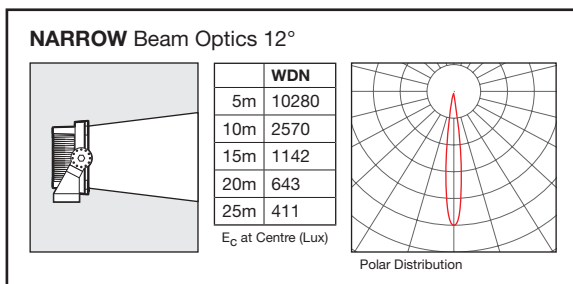
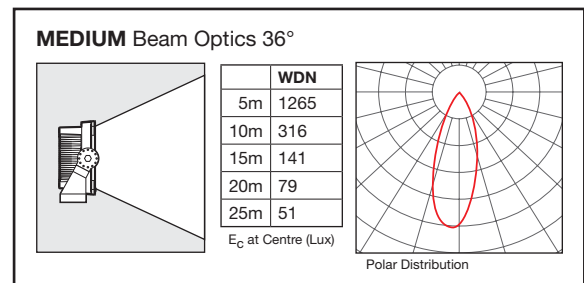
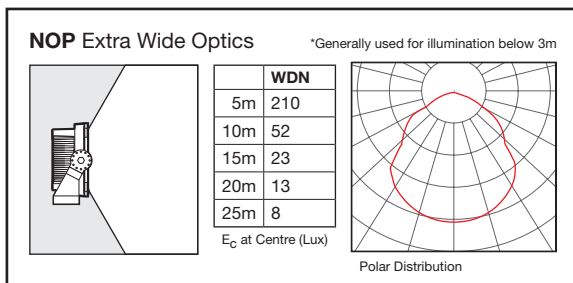
Warranty

Warranty	3 years warranty as standard 5 years extended warranty optional
----------	--

WIRING DIAGRAM



WDN-140 ILLUMINANCE AT DISTANCE



ORDERING EXAMPLE

WDN - 140 - CWT - MEDIUM - MP

PRODUCT TYPE COLOUR TEMP OPTICS SUPPLY OPTION

PRODUCT	TYPE		COLOUR TEMP		OPTICS		SUPPLY OPTION	
WDN	140	140W	CWT	Cool White	NOP	Extra Wide Optics	MP	Mains Powered
			WWT	Warm White	MEDIUM	Medium Optics		
					NARROW	Narrow Optics		
					OVAL	Oval Optics		