



RECESS 30

Recessed Linear LED





The Recess 30 is a highly configurable Linear Low/Medium recessed luminaire, available in various lumen outputs, lengths and colour temperatures.

The Recess 30 is ideal for Architectural and Commercial linear applications, for use in ceilings and walls.



BNA · Brushed Natural Aluminium



BLK · Black



WHT · White



CST · Custom

LUMINOUS FLUX

600 lm / Meter



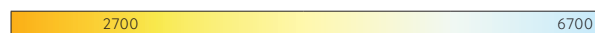
POWER

16.3W / Meter



COLOUR TEMPERATURE

2700K ~ 6700K



STATIC COLOURS



Power may vary from standard white. Please contact Coolon for details.

HIGHLY CONFIGURABLE

The Recess 30 can be easily mounted within walls and ceiling and comes in a variety of lengths, exterior colours and colour temperatures.

STEP LIGHT

The Recess 30 can be used as a stair light, or to provide a uniform wall washing effect in recessed applications.



LONG USEFUL OPERATING LIFE

Currently available specification from world's most reputable LED manufacturers states 50,000 hours of continuous operation at the rated current within the operating temperature range to 70% residual light output.



VARIOUS CCT & COLOUR BINNING CONSISTENCY

Product is offered in various Colour Temperatures using tighter bins.



3 YEARS FULL /SOLID WARRANTY

Coolon Luminaires are covered by a solid comprehensive manufacturer's warranty that covers a range of possible defects and performance parameters throughout the duration of the warranty period.



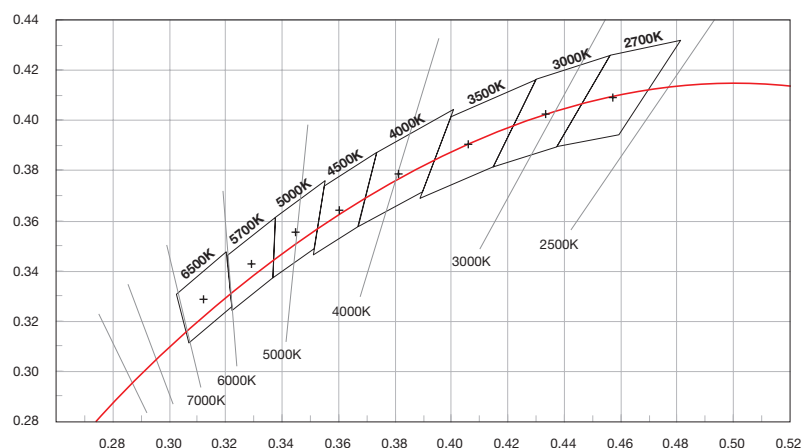
PROUDLY MADE IN AUSTRALIA

Our products are designed and manufactured in Australia. Engineered to perfection, using only the highest quality components and highly skilled labour, each luminaire is assembled and thoroughly tested to ensure that it exceeds the highest standards.

TECHNICAL SPECIFICATIONS

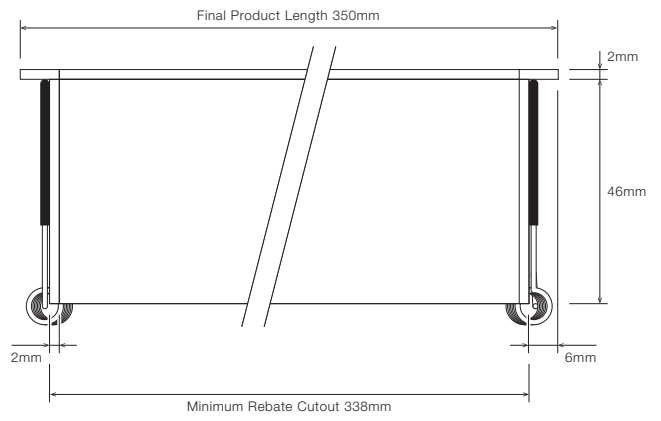
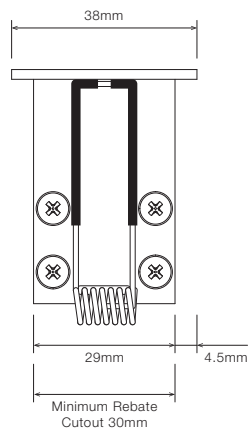
Product Code	LNR-RECESS30
Description	Recessed 30 Linear LED
Body	Aluminium Alloy Body
Finish	Brushed Natural Aluminium (Standard), Various Colours Available
Cover	Polycarbonate (PC) Diffused
End Caps	Aluminium Alloy
Segment Length (S)	300mm
Sub-Segment Length (A)	37.5
Number of Sub-Segments	8
Segment Width	10.50mm
LED Pitch	6.25mm
LEDs Per Segment	48
LEDs Per Sub Segment	6
Operating Voltage	24VDC
Typical Power Consumption per Segment	4.9W per 300mm Segment
Typical Power Consumption per Meter	16.3W per Meter
Typical Current	204mA per 300mm Segment
Colour Rendering Index (CRI)	80+
Dimmable	With DALI / PWM
Luminous Flux per Meter (lm/M)	600lm/Meter
External Heatsink Required	No
Ambient Operating Temp	Ta -20°C to 50°C
Thermal Operating	Yes (Active)
Average Lumen Maintenance @Ta 25°C	70% @ 50,000 Hours
IP Rating	IP40 (Standard), up to IP65
Max Continuous Connection Length	Please refer to installation limitations

COLOUR BINNING



■ DIMENSIONS

For final strip lengths please refer to the "Product Length" table.



■ PRODUCT LENGTH

FULL SEGMENTS	SUB SEGMENTS	EXACT STRIP LENGTH	FINAL LENGTH
0	1	37.5mm	87.5mm
0	2	75mm	125mm
0	3	112.5mm	162.5mm
0	4	150mm	200mm
0	5	187.5mm	237.5mm
0	6	225mm	275mm
0	7	262.5mm	312.5mm
1	0	300mm	350mm
1	1	337.5mm	387.5mm
1	2	375mm	425mm
1	3	412.5mm	462.5mm
1	4	450mm	500mm
1	5	487.5mm	537.5mm
1	6	525mm	575mm
1	7	562.5mm	612.5mm
2	0	600mm	650mm
2	1	637.5mm	687.5mm
2	2	675mm	725mm
2	3	712.5mm	762.5mm
2	4	750mm	800mm
2	5	787.5mm	837.5mm
2	6	825mm	875mm
2	7	862.5mm	912.5mm
3	0	900mm	950mm
3	1	937.5mm	987.5mm
3	2	975mm	1025mm
3	3	1012.5mm	1062.5mm
3	4	1050mm	1100mm
3	5	1087.5mm	1137.5mm
3	6	1125mm	1175mm
3	7	1162.5mm	1212.5mm
4	0	1200mm	1250mm
4	1	1237.5mm	1287.5mm
4	2	1275mm	1325mm
4	3	1312.5mm	1362.5mm
4	4	1350mm	1400mm
4	5	1387.5mm	1437.5mm
4	6	1425mm	1475mm
4	7	1462.5mm	1512.5mm
5	0	1500mm	1550mm

➤ Continued on next page

PRODUCT LENGTH

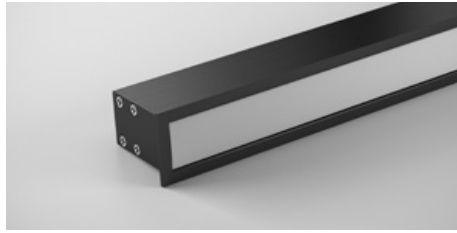
(CONTINUED)

FULL SEGMENTS	SUB SEGMENTS	EXACT STRIP LENGTH	FINAL LENGTH
5	1	1537.5mm	1587.5mm
5	2	1575mm	1625mm
5	3	1612.5mm	1662.5mm
5	4	1650mm	1700mm
5	5	1687.5mm	1737.5mm
5	6	1725mm	1775mm
5	7	1762.5mm	1812.5mm
6	0	1800mm	1850mm
6	1	1837.5mm	1887.5mm
6	2	1875mm	1925mm
6	3	1912.5mm	1962.5mm
6	4	1950mm	2000mm
6	5	1987.5mm	2037.5mm
6	6	2025mm	2075mm
6	7	2062.5mm	2112.5mm
7	0	2100mm	2150mm
7	1	2137.5mm	2187.5mm
7	2	2175mm	2225mm
7	3	2212.5mm	2262.5mm
7	4	2250mm	2300mm
7	5	2287.5mm	2337.5mm
7	6	2325mm	2375mm
7	7	2362.5mm	2412.5mm
8	0	2400mm	2450mm
8	1	2437.5mm	2487.5mm
8	2	2475mm	2525mm

Confirm Interstate Courier Compliance

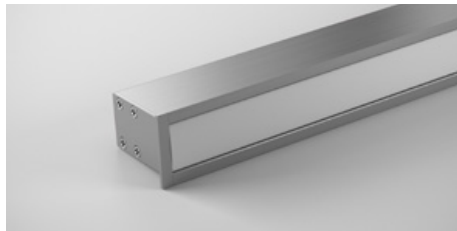
■ DIFFUSER

SD · Standard Diffused Cover

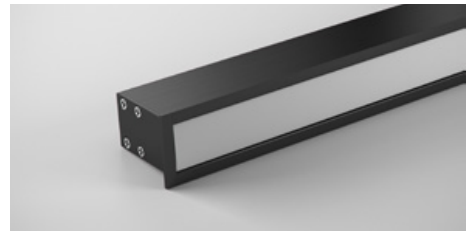


■ PROFILE COLOUR

BNA · Brushed Natural Aluminium (Standard)



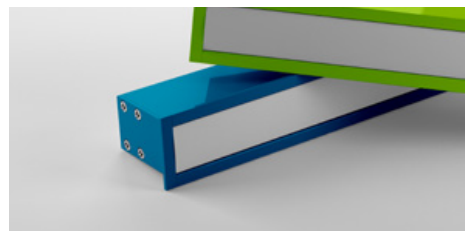
BLK · Black



WHT · White



CST · Custom Colour *



* Custom colours available on request

WIRING CONFIGURATION

CONNECTOR TYPE	DRAWING	FEMALE	MALE
WR2OS Wire 2 Core One Side			
WR2BS Wire 2 Core Both Sides			
OC2MO Outdoor Connector 2pin Male Only			
OC2FO Outdoor Connector 2pin Female Only			
OC2MF Outdoor Connector 2pin Male + Female			
SMPLC Sample Type Connector 2.5mm			

- Typical Loom Length 250 ~ 400 mm
- For detailed information on Outdoor IP67 connector please contact Coolon
- Extension cables between LED fittings and driver or PSU is achievable depending on LED load, outdoor or indoor applications. Please consult Coolon for details.

WIRING COLOUR CODE	
Red	+ VDC
Black	GND

WIRING POSITING

WB - Wire from back



Ideal for fittings installed back-to-back or limited spaces.



WS - Wire from Side



Ideal for fittings installed individually or vertically.



IP RATING

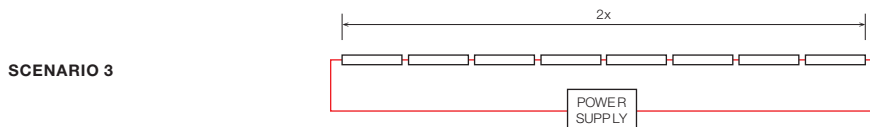
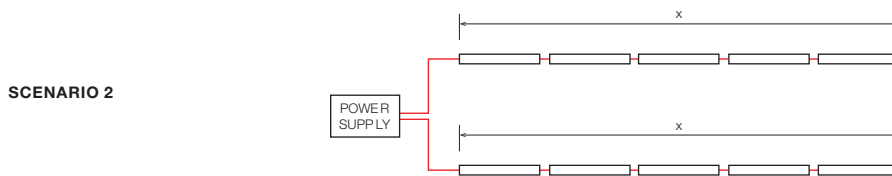
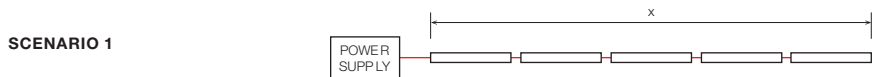
IP40

Protected against solid objects greater than 1mm. No protection against liquids.

IP65

Fully protected against dust. Protected against water jets from all directions

■ INSTALLATION LIMITS



MAX. CONTINUOUS CONNECTION LENGTH (X) CONNECTOR TYPE

8000 mm	With standard 2 bare wires (WR2OS / WR2BS)
3400 mm	With upgraded outdoor 2 pin connectors (OC2MO / OC2FO / OC2MF)

- Extension cables between LED fittings and driver or PSU is achievable depending on LED load, outdoor or indoor applications. Please consult Coolon for details.

⚠ WARNING

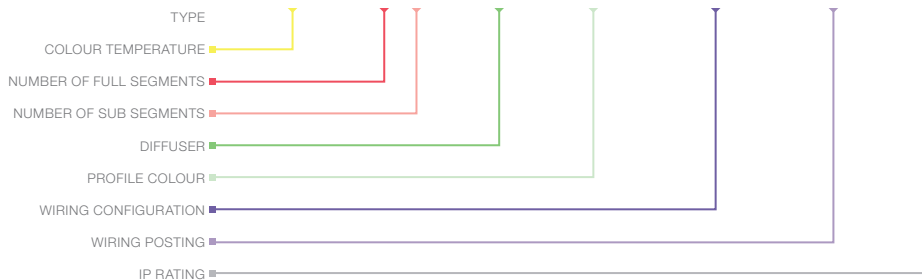
Avoid connecting multiple power supplies into a single circuit, unless they are specifically designed to do so.

✗

✗

ORDERING EXAMPLE

LNR - RECESS 30 - 3.0K - S3A0 - SD - BNA - WR2OS - WB - IP40



■ **COLOUR TEMPERATURE** PAGE 04

2.7K	2700K
2.9K	2900K
3.1K	3100K
3.9K	3900K
4.2K	4200K
4.7K	4700K
5.2K	5200K
6.7K	6700K

■ **PRODUCT LENGTH** PAGE 06

FULL SEGMENTS	SUB SEGMENTS
S1	A0
S2	A1
S3	A2
S4	A3
S5	A4
S6	A5
S7	A6
S8	A7

■ **DIFFUSER** PAGE 08

SD	Standard Diffused
----	-------------------

■ **PROFILE COLOUR** PAGE 08

BNA	Brushed Natural Aluminium (Standard)
BLK	Black
WHT	White
CST	Custom Colour *

■ **WIRING CONFIGURATION** PAGE 08

WR2OS	Wire 2 Core One Side
WR2BS	Wire 2 Core Both Sides
OC2MO	Outdoor Connector 2pin Male Only
OC2FO	Outdoor Connector 2pin Female Only
OC2MF	Outdoor Connector 2pin Male + Female
SMPLC	Sample Type Connector 2.5mm

■ **WIRING POSITING** PAGE 09

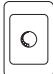

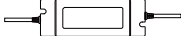

WB	Wire from Back
WS	Wire from Side

■ **IP RATING** PAGE 09

IP40
IP65

* Custom colours available on request

■ ACCESSORIES

	PRODUCT CODE	DESCRIPTION
CONTROLLER		
	CTR-PWM-10A	Coolon Wall Dimmer with 10A PWM Output
DRIVER		
	DRV-DALI-1X5A	Indoor DALI Point 1 channel Driver 5A
	DRV-DALI-IP1X10A	Outdoor DALI Point 1 channel Driver 10A
POWER SUPPLY FOR INDOOR USE		
	PWR-PLN20-24V	Mean Well Power Supply PLN 20W 24V IP64 + Flex & Plug
	PWR-PLN30-24V	Mean Well Power Supply PLN 30W 24V IP64 + Flex & Plug
	PWR-PLN60-24V	Mean Well Power Supply PLN 60W 24V IP64 + Flex & Plug
	PWR-PLN100-24V	Mean Well Power Supply PLN 100W 24V IP64 + Flex & Plug
POWER SUPPLY FOR OUTDOOR USE (IP67)		
	PWR-HLG40-24V	Mean Well Power Supply HLG 40W 24V IP67
	PWR-HLG60-24V	Mean Well Power Supply HLG 60W 24V IP67
	PWR-HLG100-24V	Mean Well Power Supply HLG 100W 24V IP67
	PWR-HLG150-24V	Mean Well Power Supply HLG 150W 24V IP67
	PWR-HLG240-24V	Mean Well Power Supply HLG 240W 24V IP67
	PWR-HLG320-24V	Mean Well Power Supply HLG 320W 24V IP67