



# ADURO+

	500	750	1000	1250	1500
LUMEN OUTPUT per metre	[Color gradient bar]				
WATTAGE per metre	10	15	20	25	30
CCT Kelvin	2700K	3000K	3500K	5000K	

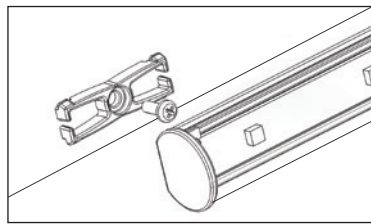
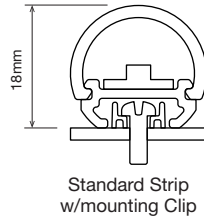
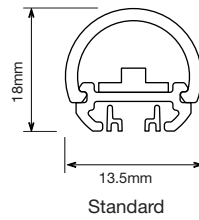
The Aduro (XP695) LED strip utilized the latest and most efficient LEDs available today and is offered in a broad range of colours temperatures.

Each LED segment (240mm) features 6 High Power Leds. The Aduro offers a very high lumen package as well as gradual / variable dimming from 100% - 3%. The Aduro is Coolons most powerful and efficient LED strip.

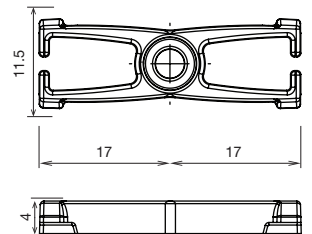
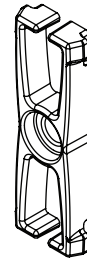


# TECHNICAL SPECIFICATIONS

Product Code	STR-XP695WH
Product Name	Aduro + / XP695 +
Description	White
Segment Length	240mm
Width	15.5mm
LED Pitch	40mm
LEDs per Segment	6
Operating Voltage	24VDC
LED Maker	CREE
LED Type	XPE or XPG
Typical Power Consumption	4.85W per 240mm segment up to 20W per metre
Typical Current	200mA per segment
Max Cont. Connection Length	5m standard, more with modifications
Dimmable	Yes (with built in dimming 0-10V)
Effective Beam Angle $2\theta$	110°
External Heatsink Required	No
Ambient Operating Temperature	Ta -40 to +50
Thermal Derating	Yes (Active)
Avg Lumen Maint. @ Ta 25°C	70% @ 50,000 Hrs
IP Rating	44 (standard)



1. Aduro+ Clip is screwed into wall.
2. Aduro+ snaps over the integrated clip design.



Mounting Clip

## COLOUR BINNING

Bin	LED Type	CCT	Luminous Flux Per Segment
C0	C0W	5000K	~350 lm
D1	D1U	4200K	~300 lm
F3	F3U	3000K	~300 lm
F6	F6U	2800K	~300 lm

## DIMENSIONS

